

Andrea H. Harper
Assistant General Counsel

EP9628
701 Ninth Street NW
Washington, DC 20068-0001

Office 202.331.6649
Fax 202.331.6767
pepco.com
ahharper@pepcoholdings.com

May 15, 2018

Ms. Brinda Westbrook-Sedgwick
Commission Secretary
Public Service Commission
of the District of Columbia
1325 G Street, N.W., Suite 800
Washington DC, 20005

Re: Service Outage SO2018-05-E

Dear Ms. Westbrook-Sedgwick:

Enclosed please find Potomac Electric Power Company's Monthly Outage Report for April 2018 pursuant to Order Nos. 15131, 15155, 15360, and 16569, issued December 2, 2008; January 12, 2009; August 9, 2009 and October 4, 2011 respectively, in the referenced proceeding.

Please feel free to contact me if you have any questions regarding this matter.

Sincerely,



Andrea H. Harper

Enclosures

cc: All Parties of Record

Attachment 1

2018 Outage Reporting to the Public Service Commission of the District of Columbia
Data Through April 30, 2018
MED Inclusive (All Sustained Interruptions)

Event ID	Nested ?	Date of Outage	Begin Time	End Time	Outage Duration	Construction	Outage Cause	Equipment Type	Customers Affected	Customer Minutes	Feeder
2353713	1	1/1/2018	0:08	2:27	139	Dist Primary - OH	Equipment Failure	Connection(i.e. Loose)	12	1,668	15172
2353751	1	1/1/2018	5:29	7:40	131	Dist Primary - OH	Unknown	Unselected	11	1,441	367
2353783	1	1/1/2018	10:41	11:33	51	Dist Primary - OH	Unknown	Unselected	1	51	14755
2353785	1	1/1/2018	10:49	11:46	57	Dist Primary - OH	Unknown	Unselected	33	1,866	15197
2353798	1	1/1/2018	12:08	12:58	50	Dist Primary - OH	Load	Unselected	39	1,937	99
2353848	1	1/1/2018	16:55	18:38	102	Dist Secondary - UG	Equipment Failure	Cable	1	102	15461
2354338	1	1/2/2018	16:26	18:25	119	Dist Secondary - OH	Equipment Failure	Connection(i.e. Loose)	1	119	15021
2354363	1	1/2/2018	18:02	21:53	230	Dist Secondary - OH	Equipment Failure	Meter	1	230	15012
2354367	1	1/2/2018	18:07	21:15	188	Dist Primary - OH	Equipment Failure	Cutout	1	188	101
2354442	1	1/2/2018	23:25	3:48	263	Dist Secondary - OH	Motor Vehicle	Unselected	1	263	451
2354480	1	1/3/2018	4:43	5:11	28	Dist Primary - OH	Foreign Contact	Unselected	78	2,205	56
2354562	1	1/3/2018	7:36	9:05	88	Dist Primary - OH	Load	Unselected	58	5,124	348
2354583	1	1/3/2018	8:20	10:04	104	Dist Secondary - OH	Equipment Failure	Connection(i.e. Loose)	46	4,774	14023
2354680	1	1/3/2018	12:33	13:32	59	Dist Primary - OH	Foreign Contact	Unselected	33	1,947	15706
2354765	1	1/3/2018	16:52	18:40	107	Dist Primary - OH	Animal/Squirrel	Fuse	1	107	15174
2354780	1	1/3/2018	17:49	18:35	46	Dist Secondary - UG	Employee	Unselected	1	46	15206
2354861	1	1/4/2018	7:58	9:29	91	Dist Primary - OH	Unknown	Unselected	3	273	15950
2354875	1	1/4/2018	8:54	10:05	70	Dist Secondary - OH	Equipment Failure	Connection(i.e. Loose)	1	70	128
2354915	0	1/4/2018	10:55	20:59	604	Dist Primary - URD	Equipment Failure	Cable	5	3,020	14008
2354975	1	1/4/2018	12:37	15:09	152	Dist Secondary - UG	Equipment Failure	Cable	1	152	15769
2354915	1	1/4/2018	13:25	16:03	158	Dist Primary - URD	Equipment Failure	Cable	15	2,370	14008
2355191	1	1/4/2018	13:46	20:15	388	Dist Secondary - UG	Equipment Failure	Cable	1	388	15012
2355045	1	1/4/2018	14:25	1:00	635	Dist Primary - OH	Equipment Failure	Cable	1	635	15173
2355085	1	1/4/2018	16:08	17:46	98	Dist Primary - OH	Weather / Wind	Unselected	55	5,390	14987
2355149	1	1/4/2018	17:55	19:38	103	Dist Primary - OH	Equipment Failure	Cable	15	1,540	387
2355190	1	1/4/2018	19:28	21:21	112	Dist Secondary - OH	Equipment Failure	Connection(i.e. Loose)	1	112	323
2355362	1	1/4/2018	19:38	2:03	385	Dist Secondary - UG	Load	Unselected	1	385	14001
2356312	1	1/4/2018	20:46	5:44	538	Dist Secondary - OH	Weather / Wind	Unselected	1	538	183
2355223	1	1/4/2018	20:49	22:34	105	Dist Primary - OH	Equipment Failure	Connection(i.e. Loose)	31	3,255	14987
2355250	1	1/4/2018	22:06	23:23	77	Dist Primary - UG	Unknown	Unselected	30	2,296	14788
2355339	1	1/5/2018	6:51	11:23	872	Dist Primary - UG	Equipment Failure	Transformer	202	176,144	15206
2355355	1	1/5/2018	8:17	10:06	108	Dist Secondary - URD	Vandalism	Unselected	1	108	14150
2355371	1	1/5/2018	8:36	10:40	124	Dist Primary - OH	Animal/Squirrel	Unselected	144	17,856	15085
2355441	1	1/5/2018	10:25	11:15	50	Dist Secondary - OH	Equipment Failure	Connection(i.e. Loose)	20	1,000	14717
2355645	1	1/5/2018	16:36	18:50	134	Dist Secondary - OH	Vandalism	Unselected	1	134	14758
2356847	1	1/5/2018	16:47	19:09	142	Dist Secondary - UG	Equipment Failure	Cable	1	142	14786
2355717	1	1/5/2018	20:16	22:45	149	Dist Primary - OH	Load	Unselected	10	1,490	387
2355750	1	1/5/2018	22:12	2:34	262	Dist Primary - UG	Load	Unselected	201	52,662	15206
2355904	1	1/6/2018	11:14	14:40	205	Dist Secondary - OH	Equipment Failure	Service	1	205	15003
2356067	1	1/7/2018	3:46	4:43	57	Dist Primary - OH	Load	Unselected	126	7,182	366
2356074	1	1/7/2018	5:00	5:24	24	Dist Primary - OH	Load	Unselected	126	3,024	366
2356141	1	1/7/2018	11:49	14:21	151	Dist Primary - OH	Load	Unselected	10	1,512	14007
2356152	1	1/7/2018	12:25	16:17	232	Dist Secondary - UG	Equipment Failure	Cable	1	232	14729
2356091	1	1/7/2018	12:48	13:33	45	Dist Primary - URD	Equipment Failure	Fuse	10	450	495
2356203	1	1/7/2018	17:49	19:24	95	Dist Secondary - OH	Tree ROW - Limb	Unselected	1	95	15003
2356220	1	1/7/2018	20:32	2:18	346	Dist Primary - UG	Equipment Failure	Transformer	31	10,726	141
2356227	1	1/7/2018	21:49	2:27	278	Dist Primary - OH	Load	Unselected	38	10,564	99
2356371	1	1/8/2018	10:51	11:45	54	Dist Primary - OH	Animal/Squirrel	Unselected	103	5,562	15175
2356406	1	1/8/2018	11:28	11:53	24	Dist Primary - OH	Animal/Squirrel	Unselected	7	170	15016
2356530	1	1/8/2018	14:41	16:40	119	Dist Secondary - UG	Equipment Failure	Meter	1	119	15769
2356724	1	1/8/2018	20:02	20:26	24	Dist Primary - OH	Equipment Failure	Cable	1,560	37,830	15085
2356889	1	1/9/2018	8:55	16:47	471	Dist Primary - OH	Equipment Failure	Wire - Bare	1	471	14017
2356900	1	1/9/2018	9:30	16:55	445	Dist Primary - OH	Equipment Failure	Wire - Bare	1	445	14017
2357058	1	1/9/2018	10:30	12:14	104	Dist Primary - UG	Equipment Failure	Cable	11	1,144	16000
2357058	0	1/9/2018	10:30	12:54	144	Dist Primary - UG	Equipment Failure	Cable	867	124,848	16000
2357588	0	1/9/2018	10:43	17:40	417	Dist Primary - UG	Cable Cut - Billable	Cable	179	74,843	15204W
2357588	0	1/9/2018	10:43	19:33	530	Dist Primary - UG	Cable Cut - Billable	Cable	45	23,850	15204W
2357026	1	1/9/2018	11:38	13:32	113	Dist Secondary - OH	Foreign Contact	Unselected	1	113	14752
2357588	1	1/9/2018	12:30	15:11	161	Dist Primary - UG	Cable Cut - Billable	Cable	112	18,032	15204W
2357169	1	1/9/2018	12:30	17:06	276	Dist Primary - UG	Cable Cut - Billable	Unselected	199	54,924	15207W
2357590	1	1/9/2018	12:30	17:12	282	Dist Primary - UG	Cable Cut - Billable	Unselected	201	56,682	15207W
2357591	1	1/9/2018	14:13	17:40	207	Dist Primary - UG	Cable Cut - Billable	Unselected	84	17,388	15204W
2357382	1	1/10/2018	5:02	5:53	51	Dist Primary - OH	Equipment Failure	Fuse	14	714	15707
2357420	1	1/10/2018	9:49	12:09	140	Dist Secondary - OH	Equipment Failure	Meter	1	140	15013
2357449	1	1/10/2018	10:40	12:00	80	Dist Primary - OH	Animal/Squirrel	Fuse	5	400	14900
2357477	1	1/10/2018	11:42	12:16	34	Dist Primary - OH	Motor Vehicle	Pole	865	29,410	16000
2357522	1	1/10/2018	11:42	12:43	61	Dist Primary - OH	Motor Vehicle	Unselected	13	793	16000
2357627	1	1/10/2018	11:42	18:42	420	Dist Secondary - OH	Motor Vehicle	Unselected	1	420	16000
2357477	0	1/10/2018	11:42	12:16	34	Dist Primary - OH	Motor Vehicle	Pole	769	26,146	16001
2357647	1	1/10/2018	18:12	19:08	56	Dist Secondary - OH	Vandalism	Unselected	1	56	15707
2357948	1	1/11/2018	20:05	22:20	134	Dist Secondary - OH	Equipment Failure	Service	1	134	128
2358013	0	1/12/2018	4:37	5:30	52	Dist Primary - OH	Equipment Failure	Pole	1,423	74,020	15014
2358013	0	1/12/2018	4:37	10:37	360	Dist Primary - OH	Equipment Failure	Pole	2	719	15014
2358046	1	1/12/2018	4:38	5:30	52	Dist Primary - OH	Equipment Failure	Connection(i.e. Loose)	2	104	15013
2358046	0	1/12/2018	4:38	6:33	115	Dist Primary - OH	Equipment Failure	Connection(i.e. Loose)	1,309	150,535	15013
2358046	0	1/12/2018	4:38	5:30	52	Dist Primary - OH	Equipment Failure	Connection(i.e. Loose)	2	104	15014
2358277	0	1/12/2018	11:42	15:01	199	Dist Primary - OH	Equipment Failure	Connection(i.e. Loose)	113	22,487	15013
2358283	1	1/12/2018	11:50	16:20	270	Dist Primary - OH	Tree Outside ROW - Limb	Unselected	1	270	394
2358314	1	1/12/2018	12:50	14:01	72	Dist Secondary - OH	Equipment Failure	Wire - Covered	1	72	14093
2358277	1	1/12/2018	14:52	15:01	9	Dist Primary - OH	Equipment Failure	Connection(i.e. Loose)	353	3,177	15013
2358448	1	1/12/2018	23:53	0:57	64	Dist Secondary - OH	Tree Outside ROW - Limb	Unselected	1	64	15010
2358487	1	1/13/2018	1:32	3:52	140	Dist Primary - OH	Equipment Failure	Connection(i.e. Loose)	56	7,840	14987
2358505	1	1/13/2018	1:50	9:02	432	Dist Secondary - OH	Tree Outside ROW - Down	Unselected	1	432	15950

2018 Outage Reporting to the Public Service Commission of the District of Columbia
Data Through April 30, 2018
MED Inclusive (All Sustained Interruptions)

Event ID	Nested ?	Date of Outage	Begin Time	End Time	Outage Duration	Construction	Outage Cause	Equipment Type	Customers Affected	Customer Minutes	Feeder
2358519	1	1/13/2018	2:11	3:54	103	Dist Primary - OH	Tree Outside ROW - Limb	Unselected	10	1,030	15015
2358529	1	1/13/2018	2:51	2:57	7	Dist Secondary - OH	Equipment Failure	Wire - Bare	17	116	372
2358740	1	1/13/2018	14:50	16:17	86	Dist Primary - OH	Tree Outside ROW - Limb	Unselected	11	951	15015
2358745	1	1/13/2018	15:04	16:30	85	Dist Primary - OH	Animal/Squirrel	Unselected	36	3,072	14767
2358778	1	1/13/2018	17:29	18:25	56	Dist Secondary - OH	Equipment Failure	Connection(i.e. Loose)	1	56	414
2358779	1	1/13/2018	17:33	17:56	23	Dist Secondary - OH	Equipment Failure	Service	1	23	372
2358805	1	1/13/2018	20:29	0:56	267	Dist Secondary - UG	Equipment Failure	Cable	1	267	15703
2358821	1	1/13/2018	22:09	0:30	141	Dist Secondary - UG	Equipment Failure	Cable	1	141	228
2358828	1	1/14/2018	0:13	11:22	669	Dist Primary - OH	Motor Vehicle	Unselected	1	669	15130
2358850	1	1/14/2018	8:04	9:00	55	Dist Primary - OH	Unknown	Unselected	9	498	451
2358930	1	1/14/2018	14:58	16:37	98	Dist Primary - OH	Animal/Squirrel	Unselected	10	983	15009
2360722	1	1/14/2018	17:07	20:09	182	Dist Secondary - UG	Equipment Failure	Cable	1	182	15207R
2358992	1	1/14/2018	21:21	22:52	91	Dist Secondary - UG	Equipment Failure	Cable	36	3,274	14712
2358998	1	1/14/2018	21:55	0:57	181	Dist Secondary - UG	Equipment Failure	Cable	76	13,772	14004
2359013	1	1/14/2018	23:30	0:57	87	Dist Secondary - OH	Equipment Failure	Connection(i.e. Loose)	1	87	14014
2359023	1	1/15/2018	0:46	0:57	11	Dist Secondary - UG	Equipment Failure	Cable	125	1,317	14004
2359037	1	1/15/2018	2:05	2:24	18	Dist Secondary - UG	Equipment Failure	Cable	35	633	15207R
2359114	1	1/15/2018	6:48	9:00	132	Dist Secondary - UG	Equipment Failure	Cable	1	132	15207R
2359237	1	1/15/2018	17:38	18:46	67	Dist Secondary - OH	Vandalism	Meter	1	67	15016
2359347	1	1/16/2018	10:35	13:23	168	Dist Primary - OH	Animal/Other	Unselected	1	168	14987
2359583	1	1/17/2018	5:45	7:22	96	Dist Secondary - OH	Equipment Failure	Connection(i.e. Loose)	1	96	14007
2359780	1	1/17/2018	18:00	19:39	99	Dist Secondary - UG	Equipment Failure	Connection(i.e. Loose)	53	5,247	14722
2359793	1	1/17/2018	21:55	22:22	27	Dist Secondary - OH	Equipment Failure	Connection(i.e. Loose)	1	27	15707
2359874	0	1/18/2018	11:28	18:10	402	Dist Primary - URD	Equipment Failure	Cutout	59	23,718	15094
2359997	1	1/18/2018	17:44	19:08	83	Dist Primary - OH	Foreign Contact	Unselected	1	83	14717
2359874	1	1/18/2018	17:52	18:10	18	Dist Primary - URD	Equipment Failure	Cutout	69	1,242	15094
2360019	0	1/18/2018	18:21	2:13	472	Dist Primary - UG	Equipment Failure	Connection(i.e. Loose)	84	39,648	227
2360019	1	1/18/2018	23:20	2:13	173	Dist Primary - UG	Equipment Failure	Connection(i.e. Loose)	121	20,933	227
2360061	1	1/18/2018	23:42	2:00	137	Network	Equipment Failure	Switch	1	137	14434
2360072	1	1/19/2018	5:41	7:09	87	Dist Secondary - OH	Equipment Failure	Connection(i.e. Loose)	16	1,397	347
2360092	1	1/19/2018	8:03	9:15	72	Dist Primary - OH	Equipment Failure	Fuse	8	576	15705
2360119	1	1/19/2018	9:17	10:09	51	Dist Secondary - UG	Equipment Failure	Connection(i.e. Loose)	1	51	14729
2360265	1	1/19/2018	15:50	19:22	211	Dist Primary - OH	Animal/Squirrel	Unselected	9	1,901	14765
2360266	1	1/19/2018	15:55	19:27	213	Dist Primary - OH	Animal/Squirrel	Unselected	10	2,126	14765
2360318	1	1/19/2018	20:05	21:30	84	Dist Secondary - URD	Employee	Unselected	1	84	15702
2360404	1	1/20/2018	17:13	21:06	233	Dist Secondary - UG	Equipment Failure	Cable	3	698	14733
2360408	1	1/20/2018	18:15	20:01	106	Dist Primary - OH	Motor Vehicle	Pole	22	2,332	479
2360408	0	1/20/2018	18:15	20:53	158	Dist Primary - OH	Motor Vehicle	Pole	248	39,184	479
2360408	0	1/20/2018	18:15	23:50	335	Dist Primary - OH	Motor Vehicle	Pole	40	13,400	479
2360408	0	1/20/2018	20:08	23:50	222	Dist Primary - OH	Motor Vehicle	Pole	89	19,758	479
2360477	1	1/21/2018	6:25	6:34	9	Dist Secondary - UG	Equipment Failure	Cable	3	27	14733
2360937	1	1/23/2018	7:03	8:33	89	Dist Secondary - UG	Equipment Failure	Cable	1	89	14713
2361044	1	1/23/2018	13:42	14:20	38	Dist Secondary - OH	Equipment Failure	Wire - Bare	1	38	15198
2361240	1	1/24/2018	12:02	17:09	306	Dist Secondary - OH	Equipment Failure	Meter	1	306	183
2361330	1	1/24/2018	19:01	20:35	94	Dist Secondary - OH	Vandalism	Unselected	1	94	15009
2362007	1	1/25/2018	6:16	13:16	420	Dist Secondary - UG	Equipment Failure	Cable	95	39,900	14712
2361500	1	1/25/2018	9:55	11:01	66	Dist Secondary - OH	Equipment Failure	Meter	1	66	14717
2362055	1	1/25/2018	14:32	16:52	139	Dist Secondary - OH	Equipment Failure	Meter	1	139	14261
2362179	1	1/26/2018	7:14	9:52	158	Dist Secondary - URD	Equipment Failure	Connection(i.e. Loose)	1	158	14200
2362301	1	1/26/2018	13:08	14:10	63	Dist Secondary - OH	Equipment Failure	Wire - Bare	1	63	14016
2362399	1	1/26/2018	18:57	19:34	38	Dist Secondary - UG	Equipment Failure	Cable	1	38	15703
2362438	1	1/27/2018	6:16	7:03	47	Dist Secondary - OH	Unknown	Unselected	1	47	15173
2362531	1	1/27/2018	14:06	17:26	200	Dist Secondary - OH	Tree ROW - Limb	Unselected	1	200	15944
2362728	1	1/29/2018	5:05	6:40	95	Dist Primary - OH	Equipment Failure	Regulator	597	56,715	15197
2362728	0	1/29/2018	5:05	7:03	118	Dist Primary - OH	Equipment Failure	Regulator	93	10,974	15197
2362728	0	1/29/2018	5:05	7:35	150	Dist Primary - OH	Equipment Failure	Regulator	679	101,850	15197
2363962	1	1/29/2018	9:31	11:50	139	Dist Secondary - OH	Tree ROW - Limb	Service	1	139	328
2362839	1	1/29/2018	11:10	11:22	13	Dist Secondary - OH	Equipment Failure	Service	14	182	366
2362865	1	1/29/2018	11:53	12:56	63	Dist Secondary - OH	Vandalism	Unselected	1	63	15010
2362931	1	1/29/2018	15:47	16:45	58	Dist Secondary - UG	Equipment Failure	Meter	1	58	14729
2363044	1	1/30/2018	10:25	13:25	180	Dist Secondary - OH	Equipment Failure	Cable	1	180	15012
2363318	1	1/30/2018	13:18	13:31	13	Dist Secondary - OH	Motor Vehicle	Unselected	1	13	15707
2363138	1	1/30/2018	15:16	16:25	69	Dist Secondary - URD	Equipment Failure	Connection(i.e. Loose)	1	69	14035
2363246	1	1/31/2018	6:07	11:08	301	Dist Primary - OH	Equipment Failure	Transformer	10	3,010	14135
2363255	1	1/31/2018	7:16	10:37	201	Dist Primary - OH	Equipment Failure	Fuse	1	201	14765
2363275	1	1/31/2018	9:21	10:45	84	Dist Secondary - OH	Equipment Failure	Connection(i.e. Loose)	1	84	15706
2363381	1	1/31/2018	16:30	18:35	124	Dist Secondary - UG	Equipment Failure	Meter	1	124	14004
2363621	1	2/1/2018	16:37	17:01	24	Dist Primary - OH	Equipment Failure	Transformer	16	384	388
2363672	1	2/1/2018	20:40	21:25	44	Dist Secondary - OH	Vandalism	Unselected	1	44	14758
2363687	1	2/1/2018	22:40	0:28	107	Dist Secondary - OH	Vandalism	Unselected	1	107	14758
2363708	1	2/2/2018	7:23	9:25	122	Dist Primary - OH	Motor Vehicle	Unselected	52	6,326	102
2363755	1	2/2/2018	9:36	10:57	80	Dist Primary - OH	Equipment Failure	Connection(i.e. Loose)	8	641	14133
2364053	1	2/3/2018	3:41	6:18	157	Dist Primary - OH	Motor Vehicle	Unselected	314	49,277	15173
2364145	1	2/3/2018	20:59	23:03	124	Dist Secondary - UG	Equipment Failure	Cable	1	124	14729
2364157	1	2/4/2018	3:22	4:09	47	Substation	Source Lost	Distr. Ckt. Breaker	1,977	93,413	15130
2364398	1	2/4/2018	16:16	17:18	63	Dist Primary - OH	Equipment Failure	Connection(i.e. Loose)	103	6,455	144
2364398	0	2/4/2018	16:16	17:30	74	Dist Primary - OH	Equipment Failure	Connection(i.e. Loose)	77	5,698	144
2364469	1	2/4/2018	16:16	0:59	523	Dist Primary - OH	Equipment Failure	Connection(i.e. Loose)	93	48,639	144
2364435	1	2/4/2018	16:43	20:30	226	Dist Secondary - UG	Cable Cut - Billable	Cable	1	226	14712
2365683	1	2/4/2018	19:03	3:48	525	Dist Secondary - UG	Equipment Failure	Cable	1	525	14736
2364536	1	2/4/2018	19:36	3:26	470	Dist Secondary - UG	Equipment Failure	Cable	1	470	15769
2364573	1	2/4/2018	20:46	1:22	276	Dist Secondary - OH	Tree Outside ROW - Limb	Unselected	1	276	15009
2365684	1	2/5/2018	2:34	3:48	74	Dist Secondary - UG	Equipment Failure	Cable	1	74	14736

2018 Outage Reporting to the Public Service Commission of the District of Columbia
Data Through April 30, 2018
MED Inclusive (All Sustained Interruptions)

Event ID	Nested ?	Date of Outage	Begin Time	End Time	Outage Duration	Construction	Outage Cause	Equipment Type	Customers Affected	Customer Minutes	Feeder
2364674	1	2/5/2018	2:41	3:27	46	Dist Secondary - UG	Equipment Failure	Cable	1	46	15769
2364714	1	2/5/2018	7:25	11:05	219	Dist Primary - OH	Equipment Failure	Connection(i.e. Loose)	1	219	369
2364727	1	2/5/2018	8:17	11:50	213	Dist Secondary - UG	Equipment Failure	Joint Failure	73	15,537	15769
2364828	1	2/5/2018	10:27	13:00	152	Dist Secondary - UG	Unknown	Unselected	1	152	15769
2364923	1	2/5/2018	14:03	19:54	350	Network	Equipment Failure	Cable	1	350	14375
2364979	1	2/5/2018	17:12	20:54	221	Dist Secondary - UG	Equipment Failure	Cable	1	221	14729
2365041	1	2/6/2018	4:46	6:05	79	Dist Primary - UG	Equipment Failure	Fuse	73	5,765	14004
2365167	1	2/6/2018	11:50	13:41	111	Dist Primary - OH	Equipment Failure	Connection(i.e. Loose)	1	111	15706
2365179	1	2/6/2018	12:03	13:01	57	Dist Primary - OH	Unknown	Unselected	1	57	14008
2365210	1	2/6/2018	12:57	16:02	185	Dist Primary - UG	Equipment Failure	Transformer	88	16,280	16002
2365290	1	2/6/2018	12:57	16:22	205	Dist Primary - UG	Equipment Failure	Transformer	8	1,640	16002
2365295	1	2/6/2018	12:57	17:41	284	Dist Primary - UG	Equipment Failure	Transformer	60	17,050	16002
2365312	1	2/6/2018	12:57	18:07	310	Dist Primary - UG	Equipment Failure	Transformer	19	5,898	16002
2365320	1	2/6/2018	12:57	18:16	319	Dist Primary - UG	Equipment Failure	Transformer	40	12,760	16002
2365321	1	2/6/2018	12:57	18:27	330	Dist Primary - UG	Equipment Failure	Transformer	3	990	16002
2365282	1	2/6/2018	15:37	18:31	173	Dist Primary - UG	Equipment Failure	Transformer	35	6,071	16002
2365282	0	2/6/2018	16:25	18:31	125	Dist Primary - UG	Equipment Failure	Transformer	15	1,880	16002
2365335	1	2/6/2018	19:17	3:04	467	Dist Primary - UG	Equipment Failure	Transformer - Subsurface	15	7,005	16002
2365357	1	2/7/2018	0:22	2:46	144	Dist Secondary - UG	Equipment Failure	Cable	1	144	14712
2365540	1	2/7/2018	11:34	13:36	122	Dist Secondary - OH	Unknown	Unselected	1	122	394
2365571	1	2/7/2018	15:50	17:14	84	Dist Secondary - OH	Tree Outside ROW - Limb	Unselected	1	84	14261
2366821	1	2/7/2018	19:26	20:10	44	Dist Secondary - UG	Equipment Failure	Cable	1	44	14004
2366851	1	2/8/2018	13:54	16:11	136	Dist Secondary - OH	Vandalism	Unselected	1	136	14755
2365860	1	2/8/2018	14:12	14:56	44	Dist Secondary - OH	Employee	Unselected	1	44	15166
2365898	1	2/8/2018	16:12	18:07	115	Dist Secondary - UG	Equipment Failure	Connection(i.e. Loose)	1	115	15762
2365929	1	2/8/2018	18:08	19:38	90	Dist Secondary - UG	Equipment Failure	Meter	1	90	15762
2365943	1	2/8/2018	20:01	21:10	69	Dist Primary - OH	Load	Unselected	26	1,791	15016
2365954	1	2/8/2018	21:19	22:11	52	Dist Primary - OH	Equipment Failure	Connection(i.e. Loose)	15	780	14717
2366049	1	2/9/2018	10:22	12:20	117	Dist Secondary - OH	Equipment Failure	Connection(i.e. Loose)	1	117	15016
2366126	1	2/9/2018	13:59	15:57	118	Dist Secondary - UG	Equipment Failure	Connection(i.e. Loose)	1	118	15762
2366154	1	2/9/2018	15:18	16:19	60	Dist Primary - OH	Foreign Contact	Unselected	47	2,822	14755
2366237	1	2/10/2018	8:11	9:44	93	Dist Primary - OH	Animal/Squirrel	Unselected	28	2,604	15867
2366272	1	2/10/2018	11:48	15:20	212	Dist Secondary - UG	Equipment Failure	Cable	1	212	229
2366372	1	2/10/2018	22:29	2:30	241	Dist Secondary - OH	Equipment Failure	Meter	1	241	15173
2366465	1	2/11/2018	5:42	6:59	77	Dist Primary - URD	Equipment Failure	Cable	72	5,544	15170
2366465	0	2/11/2018	5:42	8:01	139	Dist Primary - URD	Equipment Failure	Cable	115	15,985	15170
2366550	1	2/11/2018	12:56	13:38	42	Dist Secondary - OH	Tree Outside ROW - Limb	Unselected	1	42	15021
2366659	1	2/11/2018	18:35	19:51	76	Dist Primary - OH	Unknown	Unselected	13	988	14755
2366717	1	2/12/2018	1:42	10:42	540	Dist Primary - URD	Equipment Failure	Transformer - Subsurface	7	3,780	15094
2366743	1	2/12/2018	7:25	15:17	472	Dist Primary - OH	Weather / Lightning	Unselected	1	472	96
2366762	1	2/12/2018	8:44	9:52	68	Dist Primary - OH	Unknown	Unselected	2	136	15710
2366885	1	2/12/2018	12:57	14:29	92	Dist Primary - OH	Equipment Failure	Cable	306	28,076	309
2366885	0	2/12/2018	12:57	14:54	117	Dist Primary - OH	Equipment Failure	Cable	186	21,716	309
2366900	1	2/12/2018	13:21	15:09	108	Dist Primary - OH	Unknown	Unselected	1	108	96
2366982	1	2/12/2018	19:08	20:19	70	Dist Secondary - OH	Equipment Failure	Meter	1	70	15867
2367014	1	2/12/2018	21:35	4:22	407	Dist Secondary - URD	Equipment Failure	Cable	1	407	15176
2367092	1	2/13/2018	9:49	11:31	102	Dist Secondary - OH	Equipment Failure	Connection(i.e. Loose)	1	102	15173
2367121	1	2/13/2018	10:34	14:36	242	Dist Secondary - UG	Equipment Failure	Cable	1	242	199
2368906	1	2/13/2018	19:18	0:17	299	Dist Secondary - UG	Equipment Failure	Joint Failure	1	299	14200
2367353	1	2/14/2018	0:17	0:37	20	Dist Secondary - UG	Equipment Failure	Joint Failure	39	780	14200
2367404	1	2/14/2018	9:42	9:53	11	Substation	Employee	Unselected	1,638	17,417	14004
2367405	1	2/14/2018	9:42	9:53	11	Substation	Employee	Unselected	1,031	11,822	14008
2367406	1	2/14/2018	9:42	9:54	12	Substation	Employee	Unselected	905	11,162	14093
2367615	1	2/14/2018	17:13	22:37	323	Dist Secondary - OH	Equipment Failure	Service	1	323	15943
2367640	0	2/14/2018	20:28	0:05	217	Dist Primary - UG	Equipment Failure	Switch	221	47,957	212
2367640	1	2/14/2018	20:28	3:46	438	Dist Primary - UG	Equipment Failure	Switch	229	100,302	212
2367742	1	2/15/2018	9:51	11:23	92	Dist Secondary - OH	Equipment Failure	Connection(i.e. Loose)	1	92	15175
2367847	1	2/15/2018	14:51	15:18	27	Dist Secondary - UG	Equipment Failure	Cable	61	1,647	15762
2367907	1	2/15/2018	23:34	0:45	71	Dist Secondary - OH	Foreign Contact	Unselected	1	71	14261
2368037	1	2/16/2018	14:17	18:05	228	Dist Primary - OH	Tree Outside ROW - Limb	Unselected	2	456	14890
2368322	1	2/18/2018	9:07	0:44	937	Dist Primary - UG	Equipment Failure	Transformer - Subsurface	3	2,811	14766
2368454	1	2/19/2018	8:18	9:34	76	Dist Primary - OH	Unknown	Unselected	142	10,792	14014
2368476	1	2/19/2018	10:17	11:48	91	Dist Secondary - OH	Equipment Failure	Connection(i.e. Loose)	1	91	451
2368479	1	2/19/2018	10:32	21:00	627	Dist Secondary - UG	Unknown	Unselected	1	627	16003
2368505	1	2/19/2018	12:51	15:43	172	Dist Secondary - OH	Equipment Failure	Service	1	172	328
2368553	1	2/19/2018	22:37	23:31	54	Dist Secondary - UG	Unknown	Unselected	1	54	16003
2368647	1	2/20/2018	10:21	16:42	380	Dist Primary - OH	Equipment Failure	Transformer	1	380	96
2368654	1	2/20/2018	10:32	13:30	177	Network	Equipment Failure	Switch	1	177	14405
2368669	1	2/20/2018	11:19	14:02	162	Network	Equipment Failure	Meter	1	162	15343
2368770	1	2/20/2018	15:51	16:07	16	Dist Primary - OH	Equipment Failure	Cable	756	12,096	15199
2368776	1	2/20/2018	15:51	16:58	67	Dist Primary - OH	Equipment Failure	Cable	837	56,079	15199
2370404	1	2/20/2018	20:07	4:50	523	Dist Secondary - UG	Equipment Failure	Cable	1	523	14555
2368914	0	2/21/2018	7:58	10:37	159	Dist Primary - OH	Motor Vehicle	Unselected	145	23,055	14016
2368914	1	2/21/2018	7:58	13:59	361	Dist Primary - OH	Motor Vehicle	Unselected	43	15,523	14016
2368914	0	2/21/2018	7:58	23:49	951	Dist Primary - OH	Motor Vehicle	Unselected	1	951	14016
2369052	1	2/21/2018	11:58	12:53	55	Dist Secondary - UG	Foreign Contact	Unselected	1	55	15206
2369127	1	2/21/2018	14:37	17:21	163	Dist Secondary - UG	Equipment Failure	Meter	1	163	14004
2369229	1	2/22/2018	3:35	4:54	79	Dist Secondary - URD	Equipment Failure	Cable	1	79	15130
2369302	1	2/22/2018	10:24	10:34	10	Dist Secondary - UG	Equipment Failure	Meter	1	10	14712
2369337	1	2/22/2018	12:00	13:36	96	Dist Secondary - UG	Unknown	Unselected	29	2,784	14731
2369394	1	2/22/2018	14:46	16:12	86	Dist Primary - UG	Equipment Failure	Elbow Insert	17	1,462	14787
2369436	1	2/22/2018	19:56	21:14	78	Dist Primary - OH	Foreign Contact	Unselected	54	4,212	14031
2369446	1	2/22/2018	22:32	0:23	111	Dist Secondary - OH	Animal/Other	Unselected	1	111	15085

2018 Outage Reporting to the Public Service Commission of the District of Columbia
Data Through April 30, 2018
MED Inclusive (All Sustained Interruptions)

Event ID	Nested ?	Date of Outage	Begin Time	End Time	Outage Duration	Construction	Outage Cause	Equipment Type	Customers Affected	Customer Minutes	Feeder
2369469	1	2/23/2018	8:19	11:30	191	Dist Secondary - UG	Equipment Failure	Service	1	191	15874
2369655	1	2/23/2018	17:18	20:18	179	Dist Secondary - OH	Equipment Failure	Meter	1	179	97
2369658	1	2/23/2018	17:40	20:00	139	Dist Primary - OH	Equipment Failure	Fuse	1	139	15173
2369687	0	2/23/2018	22:34	23:41	67	Dist Primary - OH	Motor Vehicle	Pole	158	10,586	14755
2369687	0	2/23/2018	22:49	23:41	52	Dist Primary - OH	Motor Vehicle	Pole	16	832	14755
2369687	1	2/23/2018	22:49	4:59	370	Dist Primary - OH	Motor Vehicle	Pole	39	14,430	14755
2369699	1	2/23/2018	23:37	5:00	322	Dist Primary - OH	Motor Vehicle	Unselected	1	322	14755
2369824	1	2/24/2018	12:02	12:58	56	Dist Primary - OH	Equipment Failure	Switch - Gang Op	33	1,848	15197
2369930	1	2/24/2018	18:58	21:08	129	Dist Secondary - URD	Equipment Failure	Service	1	129	14766
2369988	1	2/25/2018	10:27	17:53	445	Dist Primary - OH	Equipment Failure	Transformer	1	445	15173
2370018	1	2/25/2018	14:47	18:32	225	Dist Secondary - UG	Equipment Failure	Joint Failure	1	225	16002
2370069	1	2/25/2018	22:37	0:44	127	Dist Primary - OH	Unknown	Unselected	52	6,594	14093
2370134	1	2/26/2018	10:15	11:13	58	Dist Secondary - UG	Equipment Failure	Meter	1	58	14786
2370259	1	2/26/2018	17:04	18:47	103	Dist Secondary - OH	Equipment Failure	Connection(i.e. Loose)	1	103	14133
2370292	1	2/26/2018	19:21	20:11	49	Dist Secondary - OH	Equipment Failure	Meter	1	49	14702
2370341	1	2/27/2018	8:40	10:57	137	Dist Secondary - OH	Equipment Failure	Connection(i.e. Loose)	1	137	15003
2370355	1	2/27/2018	9:15	10:33	78	Dist Primary - OH	Animal/Squirrel	Fuse	9	700	14017
2370411	1	2/27/2018	11:04	11:26	23	Dist Secondary - OH	Tree Outside ROW - Down	Unselected	1	23	14755
2370512	1	2/27/2018	15:07	16:28	81	Dist Secondary - OH	Tree Outside ROW - Limb	Connection(i.e. Loose)	1	81	14007
2370590	1	2/27/2018	17:08	23:55	407	Dist Secondary - URD	Unknown	Unselected	1	407	15176
2370562	1	2/27/2018	17:48	19:30	101	Dist Secondary - UG	Unknown	Unselected	1	101	15012
2370567	1	2/27/2018	17:59	18:19	20	Dist Secondary - UG	Equipment Failure	Cable	1	20	15461
2370565	1	2/27/2018	18:16	18:45	29	Dist Secondary - UG	Equipment Failure	Cable	1	29	15461
2370593	1	2/27/2018	19:40	23:55	255	Dist Secondary - URD	Unknown	Unselected	1	255	15176
2370558	1	2/27/2018	22:15	22:41	26	Dist Secondary - URD	Equipment Failure	Cable	26	676	15176
2371017	1	3/1/2018	10:06	13:59	233	Dist Secondary - OH	Equipment Failure	Service	1	233	15199
2371064	1	3/1/2018	12:21	16:46	265	Dist Secondary - URD	Cable Cut - Marked Wrong	Unselected	1	265	16000
2371086	1	3/1/2018	13:19	17:09	229	Dist Secondary - OH	Foreign Contact	Unselected	1	229	490
2375415	1	3/2/2018	1:25	10:16	530	Dist Primary - OH	Weather / Wind	Unselected	71	37,662	15176
2371374	0	3/2/2018	2:14	2:27	14	Dist Primary - OH	Unknown	Unselected	281	3,826	488
2371374	1	3/2/2018	2:14	2:27	14	Dist Primary - OH	Unknown	Unselected	1,086	14,788	15003
2371695	1	3/2/2018	2:18	4:21	123	Dist Primary - OH	Tree ROW - Limb	Unselected	169	20,787	14023
2371695	0	3/2/2018	2:18	4:40	142	Dist Primary - OH	Tree ROW - Limb	Unselected	153	21,726	14023
2371695	0	3/2/2018	2:18	4:41	143	Dist Primary - OH	Tree ROW - Limb	Unselected	188	26,884	14023
2371384	1	3/2/2018	2:20	4:47	147	Dist Primary - OH	Tree Outside ROW - Limb	Unselected	51	7,512	14008
2372109	0	3/2/2018	2:34	5:02	148	Dist Primary - OH	Weather / Wind	Unselected	281	41,588	488
2372109	1	3/2/2018	2:34	5:02	148	Dist Primary - OH	Weather / Wind	Unselected	1,001	148,148	15003
2371580	1	3/2/2018	2:35	16:49	2,294	Dist Secondary - OH	Weather / Wind	Unselected	14	32,116	65
2371649	1	3/2/2018	2:42	4:46	124	Dist Primary - OH	Weather / Wind	Unselected	85	10,578	15003
2371786	1	3/2/2018	3:27	3:51	23	Dist Primary - OH	Unknown	Unselected	1,094	25,527	15705
2371907	1	3/2/2018	4:20	12:20	1,920	Dist Secondary - OH	Tree Row - Down	Unselected	12	23,040	14031
2371921	1	3/2/2018	4:28	8:35	4,566	Dist Primary - OH	Weather / Wind	Unselected	12	54,794	14133
2372843	1	3/2/2018	4:31	8:23	232	Dist Primary - OH	Weather / Wind	Unselected	247	57,304	128
2371928	1	3/2/2018	4:31	11:24	413	Dist Primary - OH	Tree Outside ROW - Down	Unselected	66	27,256	128
2396076	1	3/2/2018	5:08	7:54	4,487	Dist Secondary - OH	Tree Row - Down	Unselected	4	17,948	14146
2372696	1	3/2/2018	5:12	5:30	18	Dist Primary - OH	Weather / Wind	Unselected	85	1,551	15003
2371656	0	3/2/2018	5:30	12:03	394	Dist Primary - UG	Employee	Unselected	281	110,611	488
2382053	0	3/2/2018	5:30	11:49	1,819	Dist Primary - OH	Weather / Wind	Unselected	281	511,139	488
2371656	1	3/2/2018	5:30	12:03	394	Dist Primary - UG	Employee	Unselected	553	217,679	15003
2382053	1	3/2/2018	5:30	11:49	1,819	Dist Primary - OH	Weather / Wind	Unselected	1,001	1,820,819	15003
2372868	1	3/2/2018	5:54	8:23	148	Dist Primary - OH	Weather / Wind	Unselected	56	8,299	128
2372868	0	3/2/2018	5:54	8:24	149	Dist Primary - OH	Weather / Wind	Unselected	139	20,739	128
2372898	1	3/2/2018	6:00	9:58	238	Dist Primary - OH	Tree ROW - Limb	Wire - Bare	361	85,828	383
2372975	1	3/2/2018	6:13	10:27	254	Dist Primary - OH	Weather / Wind	Unselected	549	139,391	15709
2373006	1	3/2/2018	6:20	18:55	755	Dist Primary - UG	Tree Outside ROW - Limb	Unselected	1	755	14135
2373073	1	3/2/2018	6:27	8:50	1,583	Dist Primary - OH	Weather / Wind	Unselected	179	283,357	14755
2373073	0	3/2/2018	6:27	10:52	3,145	Dist Primary - OH	Weather / Wind	Unselected	18	56,610	14755
2404618	0	3/2/2018	6:35	9:47	1,632	Dist Primary - OH	Tree Outside ROW - Down	Unselected	655	1,068,960	14008
2404618	1	3/2/2018	6:35	4:05	2,730	Dist Primary - OH	Tree Outside ROW - Down	Unselected	3	8,190	14008
2373182	1	3/2/2018	6:44	13:56	1,872	Dist Primary - OH	Tree Outside ROW - Limb	Wire - Bare	59	110,422	14093
2373288	1	3/2/2018	7:00	15:41	521	Dist Secondary - OH	Weather / Wind	Unselected	1	521	15094
2373377	1	3/2/2018	7:20	14:51	450	Dist Primary - OH	Weather / Wind	Wire - Bare	2,502	1,127,026	15006
2373582	1	3/2/2018	7:58	0:25	987	Dist Primary - OH	Weather / Wind	Unselected	204	201,348	14132
2373621	1	3/2/2018	8:07	14:15	1,807	Dist Primary - OH	Unknown	Unselected	1	1,807	14200
2373838	1	3/2/2018	8:23	7:40	1,397	Dist Primary - OH	Foreign Contact	Unselected	31	43,295	329
2383029	1	3/2/2018	8:34	5:16	2,681	Dist Primary - OH	Weather / Wind	Unselected	139	372,694	15174
2374068	1	3/2/2018	8:40	13:35	294	Dist Secondary - OH	Weather / Wind	Unselected	1	294	14133
2374151	1	3/2/2018	8:49	15:00	4,691	Dist Secondary - OH	Tree Outside ROW - Down	Unselected	5	23,455	132
2409880	1	3/2/2018	8:55	8:05	4,270	Dist Primary - OH	Weather / Wind	Unselected	10	42,700	15198
2374455	1	3/2/2018	9:22	22:40	3,678	Dist Secondary - OH	Tree Row - Down	Unselected	1	3,678	14022
2374739	0	3/2/2018	9:38	18:00	502	Dist Primary - OH	Tree ROW - Limb	Unselected	491	246,253	367
2374739	0	3/2/2018	9:38	18:00	502	Dist Primary - OH	Tree ROW - Limb	Unselected	362	181,555	383
2374739	0	3/2/2018	9:38	18:00	502	Dist Primary - OH	Tree ROW - Limb	Unselected	466	233,715	386
2374739	1	3/2/2018	9:38	18:00	502	Dist Primary - OH	Tree ROW - Limb	Unselected	621	311,452	388
2374739	0	3/2/2018	9:38	18:00	502	Dist Primary - OH	Tree ROW - Limb	Unselected	11	5,517	14809
2374804	1	3/2/2018	9:40	16:55	435	Dist Primary - OH	Equipment Failure	Wire - Bare	92	39,979	205
2374887	1	3/2/2018	9:52	14:03	4,571	Dist Secondary - OH	Tree Outside ROW - Down	Unselected	1	4,571	14015
2374982	1	3/2/2018	9:54	14:56	302	Dist Primary - OH	Weather / Wind	Unselected	690	208,426	14016
2374982	0	3/2/2018	9:54	14:56	302	Dist Primary - OH	Weather / Wind	Unselected	152	45,914	15094
2375155	1	3/2/2018	10:10	20:45	2,075	Dist Primary - OH	Weather / Wind	Unselected	24	49,800	485
2405957	1	3/2/2018	10:16	22:29	3,612	Dist Primary - OH	Weather / Wind	Unselected	25	90,301	144
2375211	1	3/2/2018	10:20	15:56	335	Dist Primary - OH	Weather / Wind	Unselected	921	308,873	14014
2398562	0	3/2/2018	10:23	4:59	2,556	Dist Primary - OH	Unknown	Unselected	15	38,340	15174

2018 Outage Reporting to the Public Service Commission of the District of Columbia
Data Through April 30, 2018
MED Inclusive (All Sustained Interruptions)

Event ID	Nested ?	Date of Outage	Begin Time	End Time	Outage Duration	Construction	Outage Cause	Equipment Type	Customers Affected	Customer Minutes	Feeder
2375392	1	3/2/2018	10:23	10:52	2,909	Dist Primary - OH	Weather / Wind	Unselected	24	69,807	15198
2375402	1	3/2/2018	10:24	22:27	3,603	Dist Primary - OH	Weather / Wind	Unselected	1	3,603	144
2371406	1	3/2/2018	10:41	18:23	462	Dist Secondary - OH	Weather / Wind	Unselected	1,933	892,434	15013
2378385	1	3/2/2018	10:51	18:12	441	Dist Secondary - OH	Weather / Wind	Unselected	1	441	369
2378379	1	3/2/2018	10:51	4:34	3,943	Dist Primary - OH	Weather / Wind	Unselected	69	272,067	369
2376464	1	3/2/2018	10:56	20:04	3,427	Dist Primary - OH	Tree Row - Down	Pole	40	137,083	64
2376614	1	3/2/2018	11:01	13:41	160	Dist Primary - OH	Weather / Wind	Unselected	1,026	164,109	15176
2376637	1	3/2/2018	11:04	22:40	696	Dist Primary - OH	Weather / Wind	Unselected	4	2,784	15867
2377041	0	3/2/2018	11:08	16:12	304	Dist Primary - OH	Weather / Wind	Unselected	434	131,958	99
2377041	1	3/2/2018	11:08	16:12	304	Dist Primary - OH	Weather / Wind	Unselected	497	151,113	118
2377041	0	3/2/2018	11:08	16:12	304	Dist Primary - OH	Weather / Wind	Unselected	238	72,364	380
2377041	0	3/2/2018	11:08	16:12	304	Dist Primary - OH	Weather / Wind	Unselected	2	608	14716
2373102	1	3/2/2018	11:22	12:25	63	Dist Primary - OH	Weather / Wind	Unselected	362	22,915	383
2378374	1	3/2/2018	11:27	18:12	395	Dist Secondary - OH	Weather / Wind	Unselected	1	395	369
2378883	1	3/2/2018	11:38	18:06	4,708	Dist Primary - OH	Weather / Wind	Unselected	15	70,614	14766
2378448	1	3/2/2018	11:40	15:00	2,000	Dist Primary - OH	Animal/Squirrel	Fuse	120	24,000	14261
2379127	1	3/2/2018	11:54	20:31	1,956	Dist Primary - OH	Weather / Wind	Unselected	7	13,695	15013
2379154	1	3/2/2018	11:56	14:57	181	Dist Primary - OH	Weather / Wind	Unselected	991	179,024	14014
2379505	1	3/2/2018	11:57	18:00	362	Dist Primary - OH	Tree ROW - Limb	Unselected	2,117	767,377	15021
2386944	1	3/2/2018	12:02	18:13	372	Dist Secondary - OH	Weather / Wind	Unselected	68	25,289	15016
2375997	1	3/2/2018	12:12	19:45	453	Dist Primary - OH	Weather / Wind	Unselected	127	57,531	14717
2380947	1	3/2/2018	12:24	10:05	1,300	Dist Primary - OH	Weather / Wind	Unselected	1	1,300	14753
2381358	1	3/2/2018	12:33	7:16	1,124	Dist Primary - OH	Tree Row - Down	Unselected	248	278,636	181
2381513	1	3/2/2018	12:37	17:22	284	Dist Secondary - OH	Foreign Contact	Unselected	1	284	205
2381773	1	3/2/2018	12:41	17:00	1,699	Dist Primary - OH	Weather / Wind	Unselected	96	163,066	165
2384672	1	3/2/2018	12:48	15:14	4,465	Dist Secondary - OH	Tree Outside ROW - Down	Unselected	1	4,465	14133
2382432	1	3/2/2018	13:00	9:25	1,225	Dist Primary - OH	Weather / Wind	Unselected	6	7,350	14753
2382966	1	3/2/2018	13:07	18:17	4,630	Dist Primary - OH	Tree Outside ROW - Down	Unselected	4	18,520	144
2383070	1	3/2/2018	13:12	11:38	1,346	Dist Primary - OH	Weather / Wind	Unselected	24	32,298	15003
2383296	1	3/2/2018	13:15	13:36	21	Dist Secondary - URD	Weather / Wind	Unselected	111	2,335	495
2399352	1	3/2/2018	13:26	17:42	4,576	Dist Primary - OH	Weather / Wind	Unselected	33	151,008	327
2383671	1	3/2/2018	13:26	10:23	1,257	Dist Primary - OH	Weather / Wind	Unselected	1	1,257	14017
2384009	1	3/2/2018	13:28	17:30	3,121	Dist Secondary - OH	Tree Outside ROW - Limb	Unselected	22	68,669	15946
2384102	1	3/2/2018	13:31	18:15	1,724	Dist Primary - OH	Tree Outside ROW - Limb	Unselected	92	158,608	14767
2376114	1	3/2/2018	14:12	17:12	179	Dist Primary - OH	Weather / Wind	Unselected	2,133	382,234	15710
2385287	0	3/2/2018	14:14	0:34	620	Dist Primary - OH	Weather / Wind	Unselected	477	295,740	14135
2385287	1	3/2/2018	14:14	2:18	724	Dist Primary - OH	Weather / Wind	Unselected	436	315,664	14135
2385452	1	3/2/2018	14:20	16:00	4,420	Dist Secondary - OH	Weather / Wind	Unselected	5	22,099	132
2385494	1	3/2/2018	14:21	11:29	1,267	Dist Primary - OH	Equipment Failure	Connection(i.e. Loose)	89	112,793	120
2410621	1	3/2/2018	14:38	13:22	5,684	Dist Secondary - OH	Weather / Wind	Service	1	5,684	15199
2386078	1	3/2/2018	14:53	20:40	347	Dist Secondary - OH	Weather / Wind	Unselected	1	347	467
2401208	1	3/2/2018	14:56	20:24	4,648	Dist Secondary - OH	Weather / Wind	Unselected	1	4,648	87
2383008	1	3/2/2018	15:01	15:07	4,326	Dist Primary - OH	Tree Outside ROW - Down	Unselected	280	1,211,173	15130
2398931	1	3/2/2018	15:11	16:03	1,492	Dist Secondary - OH	Tree Outside ROW - Down	Unselected	1	1,492	14007
2386818	1	3/2/2018	15:19	19:14	4,555	Dist Primary - UG	Equipment Failure	Connection(i.e. Loose)	1	4,555	65
2387987	1	3/2/2018	15:50	21:11	321	Dist Secondary - OH	Tree Outside ROW - Down	Unselected	26	8,346	87
2387988	1	3/2/2018	15:50	15:30	2,859	Dist Primary - OH	Weather / Wind	Unselected	22	62,908	132
2401875	1	3/2/2018	15:57	3:14	2,117	Dist Secondary - OH	Tree Outside ROW - Limb	Unselected	1	2,117	15009
2388370	1	3/2/2018	15:59	15:50	1,431	Dist Secondary - OH	Tree Outside ROW - Down	Unselected	1	1,431	467
2400681	1	3/2/2018	16:14	13:30	2,715	Dist Primary - OH	Weather / Wind	Unselected	8	21,721	327
2394425	1	3/2/2018	16:15	13:03	2,687	Dist Primary - OH	Weather / Wind	Unselected	67	180,045	15705
2389152	1	3/2/2018	16:18	10:44	1,106	Dist Secondary - OH	Weather / Wind	Unselected	1	1,106	15010
2402260	1	3/2/2018	16:20	12:02	2,622	Dist Primary - OH	Weather / Wind	Unselected	1	2,622	494
2389983	1	3/2/2018	16:45	2:30	3,464	Dist Primary - OH	Tree Outside ROW - Limb	Unselected	1	3,464	467
2390076	1	3/2/2018	16:48	15:50	1,382	Dist Secondary - OH	Tree Outside ROW - Down	Unselected	1	1,382	467
2390165	1	3/2/2018	16:51	16:48	4,316	Dist Primary - OH	Tree Outside ROW - Down	Unselected	9	38,847	244
2390249	1	3/2/2018	16:55	19:44	3,049	Dist Secondary - OH	Tree Outside ROW - Down	Unselected	123	374,980	14766
2410711	1	3/2/2018	16:59	19:03	3,004	Dist Primary - OH	Weather / Wind	Unselected	50	150,218	14767
2390432	1	3/2/2018	17:02	15:45	4,242	Dist Secondary - OH	Tree Outside ROW - Down	Unselected	1	4,242	14133
2393299	1	3/2/2018	17:09	15:09	1,319	Dist Primary - OH	Tree Outside ROW - Down	Unselected	14	18,470	14014
2390767	1	3/2/2018	17:20	16:10	1,369	Dist Primary - OH	Tree ROW - Limb	Unselected	1	1,369	15946
2392533	1	3/2/2018	17:22	7:32	3,730	Dist Secondary - OH	Tree Outside ROW - Limb	Unselected	1	3,730	14146
2396120	1	3/2/2018	17:26	20:26	180	Dist Primary - OH	Weather / Wind	Unselected	31	5,592	327
2396130	1	3/2/2018	17:43	20:26	164	Dist Primary - OH	Weather / Wind	Unselected	16	2,622	327
2399895	1	3/2/2018	17:52	19:10	1,517	Dist Primary - OH	Weather / Wind	Unselected	20	30,348	15016
2406232	1	3/2/2018	18:12	21:40	3,088	Dist Secondary - OH	Tree Outside ROW - Limb	Unselected	1	3,088	14767
2393817	1	3/2/2018	18:36	11:11	2,434	Dist Secondary - OH	Weather / Wind	Unselected	21	51,121	15710
2393996	1	3/2/2018	18:38	21:20	162	Dist Secondary - OH	Tree Outside ROW - Limb	Unselected	1	162	15006
2399715	1	3/2/2018	18:57	17:03	4,206	Dist Primary - OH	Weather / Wind	Unselected	10	42,064	292
2421846	1	3/2/2018	18:58	1:41	3,283	Dist Secondary - OH	Weather / Wind	Unselected	1	3,283	14016
2394402	1	3/2/2018	19:04	12:15	2,470	Dist Primary - OH	Weather / Wind	Unselected	15	37,055	15710
2395542	1	3/2/2018	19:30	16:26	4,136	Dist Primary - OH	Tree Outside ROW - Down	Unselected	11	45,496	144
2411025	1	3/2/2018	19:45	7:54	3,610	Dist Secondary - OH	Tree Row - Down	Unselected	7	25,270	14146
2397752	1	3/2/2018	21:43	16:08	2,544	Dist Primary - OH	Weather / Wind	Unselected	11	27,988	15094
2398231	1	3/2/2018	22:47	19:58	2,710	Dist Primary - OH	Weather / Wind	Unselected	1	2,710	64
2399179	1	3/3/2018	2:43	12:01	1,998	Dist Primary - OH	Weather / Wind	Unselected	18	35,962	15198
2399323	1	3/3/2018	3:43	10:27	404	Dist Primary - OH	Weather / Wind	Unselected	10	4,040	14017
2399603	1	3/3/2018	4:41	20:57	976	Dist Primary - OH	Weather / Wind	Unselected	1	976	15013
2400994	1	3/3/2018	5:15	17:30	3,615	Dist Primary - OH	Weather / Wind	Unselected	38	137,370	14767
2402056	1	3/3/2018	7:49	9:26	1,537	Dist Primary - OH	Weather / Wind	Unselected	1	1,537	368
2400468	1	3/3/2018	7:53	18:45	3,531	Dist Primary - OH	Unknown	Unselected	2	7,063	15014
2400484	1	3/3/2018	7:58	10:54	1,615	Dist Primary - OH	Weather / Wind	Unselected	1	1,615	15198
2400168	1	3/3/2018	8:25	11:24	1,618	Dist Primary - OH	Weather / Wind	Unselected	18	29,132	327

2018 Outage Reporting to the Public Service Commission of the District of Columbia
Data Through April 30, 2018
MED Inclusive (All Sustained Interruptions)

Event ID	Nested ?	Date of Outage	Begin Time	End Time	Outage Duration	Construction	Outage Cause	Equipment Type	Customers Affected	Customer Minutes	Feeder
2400858	1	3/3/2018	8:45	19:48	2,103	Dist Primary - OH	Tree Row - Down	Unselected	5	10,514	327
2401037	1	3/3/2018	9:17	15:48	391	Dist Secondary - OH	Tree Outside ROW - Down	Unselected	1	391	467
2371657	1	3/3/2018	9:57	4:24	1,107	Dist Primary - OH	Tree Outside ROW - Down	Wire - Bare	95	105,165	14023
2403560	1	3/3/2018	10:08	9:09	1,380	Dist Primary - OH	Weather / Wind	Unselected	144	198,742	386
2401457	1	3/3/2018	10:18	15:05	286	Dist Primary - OH	Weather / Wind	Unselected	1	286	15130
2413101	1	3/3/2018	10:21	12:50	4,469	Dist Secondary - OH	Tree ROW - Limb	Unselected	23	102,779	15012
2401694	1	3/3/2018	10:46	3:55	2,468	Dist Secondary - OH	Tree Outside ROW - Down	Unselected	18	44,428	14753
2401963	1	3/3/2018	11:26	6:02	2,556	Dist Primary - OH	Weather / Wind	Unselected	29	74,112	15001
2403446	1	3/3/2018	12:17	12:20	1,443	Dist Primary - OH	Weather / Wind	Unselected	66	95,233	385
2402435	1	3/3/2018	12:57	16:49	3,112	Dist Primary - OH	Tree Outside ROW - Down	Unselected	1	3,112	15013
2402545	1	3/3/2018	13:01	14:43	102	Dist Secondary - OH	Weather / Wind	Unselected	1	102	328
2402458	1	3/3/2018	13:01	14:59	118	Dist Secondary - OH	Weather / Wind	Unselected	1	118	328
2400325	1	3/3/2018	13:11	19:07	1,796	Dist Secondary - OH	Weather / Wind	Unselected	1	1,796	15012
2402556	1	3/3/2018	13:23	22:00	3,397	Dist Secondary - OH	Weather / Wind	Unselected	89	302,309	120
2400410	1	3/3/2018	13:56	14:22	26	Dist Primary - OH	Tree Outside ROW - Down	Unselected	96	2,496	394
2400410	0	3/3/2018	13:56	14:35	39	Dist Primary - OH	Tree Outside ROW - Down	Unselected	201	7,839	394
2405995	1	3/3/2018	13:56	2:37	2,200	Dist Primary - OH	Weather / Wind	Unselected	1	2,200	451
2402702	1	3/3/2018	14:05	12:51	1,366	Dist Secondary - OH	Tree Outside ROW - Down	Unselected	1	1,366	15944
2403532	1	3/3/2018	15:17	13:45	4,228	Dist Secondary - OH	Weather / Wind	Unselected	1	4,228	15006
2405634	1	3/3/2018	16:15	13:36	1,281	Dist Primary - OH	Weather / Wind	Unselected	1	1,281	14135
2410327	1	3/3/2018	16:35	6:35	2,280	Dist Primary - OH	Equipment Failure	Connection(i.e. Loose)	8	18,237	14900
2401951	1	3/3/2018	17:04	5:17	733	Dist Primary - OH	Weather / Wind	Wire - Bare	470	344,510	323
2401951	0	3/3/2018	17:04	8:35	931	Dist Primary - OH	Weather / Wind	Wire - Bare	77	71,687	323
2405889	1	3/3/2018	17:05	5:17	732	Dist Primary - OH	Tree Row - Down	Unselected	31	22,678	329
2406155	1	3/3/2018	17:46	16:43	1,376	Dist Primary - OH	Weather / Wind	Unselected	66	90,831	128
2408498	1	3/3/2018	19:24	15:30	1,205	Dist Secondary - OH	Weather / Wind	Unselected	1	1,205	14900
2407824	1	3/3/2018	20:23	8:12	709	Dist Secondary - OH	Weather / Wind	Unselected	1	709	14261
2407828	1	3/3/2018	20:24	21:55	2,971	Dist Primary - OH	Tree Outside ROW - Down	Unselected	38	112,890	485
2398562	1	3/3/2018	23:31	4:59	328	Dist Primary - OH	Unknown	Unselected	307	100,696	15174
2408858	1	3/4/2018	3:02	19:48	1,006	Dist Primary - OH	Tree Row - Down	Unselected	16	16,095	327
2408891	1	3/4/2018	3:21	1:07	1,306	Dist Primary - OH	Equipment Failure	Transformer	25	32,640	14008
2409358	1	3/4/2018	8:37	2:38	1,080	Dist Primary - OH	Equipment Failure	Fuse	20	21,605	323
2409622	1	3/4/2018	10:07	12:36	149	Dist Primary - OH	Unknown	Unselected	1	149	15867
2410041	1	3/4/2018	12:26	14:43	1,576	Dist Primary - OH	Tree Outside ROW - Down	Unselected	22	34,679	385
2410164	1	3/4/2018	13:17	14:21	1,504	Dist Secondary - OH	Weather / Wind	Unselected	1	1,504	15016
2409245	1	3/4/2018	13:24	19:03	339	Dist Primary - OH	Tree Outside ROW - Down	Unselected	12	4,068	14767
2410179	1	3/4/2018	13:33	14:41	68	Dist Primary - OH	Weather / Wind	Unselected	27	1,826	15705
2410179	0	3/4/2018	13:37	14:41	63	Dist Primary - OH	Weather / Wind	Unselected	21	1,332	15705
2410212	1	3/4/2018	13:49	14:40	51	Dist Primary - OH	Tree ROW - Limb	Unselected	33	1,680	133
2410275	1	3/4/2018	14:30	19:30	1,740	Dist Primary - OH	Weather / Wind	Unselected	9	15,660	101
2410276	1	3/4/2018	14:31	14:41	10	Dist Primary - OH	Tree Outside ROW - Down	Unselected	8	80	102
2410420	1	3/4/2018	16:10	23:55	464	Dist Secondary - OH	Weather / Wind	Unselected	1	464	75
2410440	1	3/4/2018	16:26	2:42	616	Dist Primary - OH	Tree Outside ROW - Down	Unselected	1	616	14008
2411685	1	3/4/2018	17:22	21:08	1,666	Dist Secondary - OH	Weather / Wind	Unselected	17	28,319	369
2410559	1	3/4/2018	17:23	18:30	1,507	Dist Primary - OH	Weather / Wind	Unselected	1	1,507	14766
2410672	1	3/4/2018	18:36	22:34	238	Dist Primary - OH	Tree ROW - Limb	Unselected	14	3,326	183
2410766	1	3/4/2018	19:22	8:47	2,245	Dist Secondary - OH	Tree Row - Down	Unselected	1	2,245	394
2411026	1	3/5/2018	0:30	7:54	444	Dist Secondary - OH	Tree Row - Down	Unselected	1	444	14146
2412043	1	3/5/2018	1:06	10:45	579	Dist Primary - OH	Equipment Failure	Connection(i.e. Loose)	23	13,317	383
2411517	1	3/5/2018	1:06	11:22	616	Dist Primary - OH	Unknown	Unselected	3	1,848	383
2411076	1	3/5/2018	1:06	10:45	579	Dist Primary - OH	Equipment Failure	Connection(i.e. Loose)	28	16,207	383
2411217	1	3/5/2018	2:34	2:43	9	Dist Primary - OH	Equipment Failure	Connection(i.e. Loose)	2,062	18,558	14717
2411217	0	3/5/2018	2:34	4:16	102	Dist Primary - OH	Equipment Failure	Connection(i.e. Loose)	404	41,208	14717
2411439	1	3/5/2018	5:22	14:38	556	Dist Primary - OH	Weather / Wind	Unselected	3	1,668	14717
2411440	0	3/5/2018	5:27	7:28	121	Dist Primary - OH	Weather / Wind	Unselected	80	9,680	345
2411548	1	3/5/2018	6:58	1:14	1,096	Dist Primary - OH	Weather / Wind	Unselected	1	1,096	15016
2411560	1	3/5/2018	7:06	15:09	483	Dist Secondary - URD	Foreign Contact	Unselected	1	483	15174
2411440	1	3/5/2018	7:20	7:28	8	Dist Primary - OH	Weather / Wind	Unselected	168	1,344	345
2411618	1	3/5/2018	7:30	8:35	64	Dist Primary - OH	Weather / Wind	Unselected	49	3,160	14133
2411765	1	3/5/2018	8:29	12:30	241	Dist Primary - OH	Weather / Wind	Unselected	1	241	14145
2411799	1	3/5/2018	8:44	18:40	2,036	Dist Secondary - OH	Tree Outside ROW - Down	Unselected	5	10,179	366
2411826	1	3/5/2018	8:53	18:50	597	Dist Secondary - OH	Tree Outside ROW - Limb	Unselected	1	597	15943
2411883	1	3/5/2018	9:11	17:00	468	Dist Secondary - OH	Unknown	Unselected	1	468	15013
2412041	1	3/5/2018	9:35	9:59	24	Dist Secondary - OH	Tree Outside ROW - Down	Unselected	1	24	496
2412353	1	3/5/2018	9:41	11:00	79	Dist Primary - OH	Weather / Wind	Unselected	64	5,056	165
2412115	1	3/5/2018	9:46	15:04	318	Dist Primary - OH	Weather / Wind	Unselected	1	318	14717
2412161	1	3/5/2018	10:05	13:01	1,616	Dist Primary - OH	Unknown	Unselected	1	1,616	324
2412245	1	3/5/2018	10:39	1:48	908	Dist Primary - UG	Equipment Failure	Cable	25	22,702	144
2412262	1	3/5/2018	10:45	8:42	1,317	Dist Secondary - OH	Tree Row - Down	Unselected	1	1,317	15705
2412373	1	3/5/2018	11:23	3:56	992	Dist Primary - OH	Tree ROW - Limb	Unselected	2	1,984	14146
2412479	1	3/5/2018	12:20	23:24	664	Dist Secondary - OH	Foreign Contact	Unselected	28	18,588	15012
2412501	1	3/5/2018	12:27	4:25	958	Dist Primary - OH	Unknown	Unselected	1	958	15021
2412557	1	3/5/2018	12:46	6:22	1,055	Dist Secondary - OH	Equipment Failure	Connection(i.e. Loose)	1	1,055	15198
2412585	1	3/5/2018	13:05	17:16	251	Dist Secondary - OH	Unknown	Unselected	1	251	14702
2412621	1	3/5/2018	13:19	14:43	84	Dist Primary - OH	Tree Outside ROW - Down	Unselected	44	3,694	385
2412616	1	3/5/2018	13:19	13:11	1,432	Dist Secondary - OH	Equipment Failure	Wire - Bare	1	1,432	15706
2412646	1	3/5/2018	13:40	3:15	815	Dist Secondary - OH	Weather / Wind	Unselected	1	815	14014
2412713	1	3/5/2018	14:18	14:54	36	Dist Secondary - OH	Tree Row - Down	Unselected	1	36	15013
2412848	1	3/5/2018	15:33	9:58	1,105	Dist Secondary - OH	Weather / Wind	Unselected	1	1,105	144
2412959	1	3/5/2018	16:38	9:45	1,026	Dist Secondary - UG	Cable Cut - Unknown	Unselected	1	1,026	15996
2412987	1	3/5/2018	16:51	8:05	914	Dist Secondary - OH	Equipment Failure	Wire - Bare	1	914	490
2413029	1	3/5/2018	17:20	17:26	6	Dist Primary - OH	Unknown	Unselected	2	12	14806
2413182	1	3/5/2018	19:41	11:52	970	Dist Secondary - OH	Tree Outside ROW - Limb	Unselected	1	970	15010

2018 Outage Reporting to the Public Service Commission of the District of Columbia
Data Through April 30, 2018
MED Inclusive (All Sustained Interruptions)

Event ID	Nested ?	Date of Outage	Begin Time	End Time	Outage Duration	Construction	Outage Cause	Equipment Type	Customers Affected	Customer Minutes	Feeder
2413282	1	3/5/2018	21:56	7:30	574	Dist Secondary - UG	Equipment Failure	Cable	1	574	14713
2413449	1	3/6/2018	6:59	12:16	317	Dist Primary - URD	Vandalism	Unselected	1	317	15174
2413500	1	3/6/2018	8:21	17:20	539	Dist Secondary - OH	Unselected	Unselected	1	539	101
2413530	1	3/6/2018	8:51	10:16	85	Dist Secondary - OH	Foreign Contact	Unselected	1	85	14136
2413552	1	3/6/2018	9:09	14:37	328	Dist Secondary - OH	Equipment Failure	Connection(i.e. Loose)	1	328	490
2413580	1	3/6/2018	9:34	22:32	778	Dist Secondary - URD	Unknown	Unselected	1	778	15173
2413617	1	3/6/2018	10:16	13:36	199	Dist Secondary - OH	Tree ROW - Limb	Unselected	1	199	15011
2413679	1	3/6/2018	11:01	12:31	89	Dist Secondary - OH	Tree Outside ROW - Down	Unselected	1	89	14900
2413701	1	3/6/2018	11:16	12:31	74	Dist Secondary - OH	Tree Outside ROW - Down	Unselected	1	74	14900
2413725	1	3/6/2018	11:36	17:00	323	Dist Secondary - OH	Foreign Contact	Unselected	1	323	372
2413783	1	3/6/2018	12:23	13:49	85	Dist Secondary - OH	Weather / Wind	Unselected	1	85	388
2413790	1	3/6/2018	12:30	17:09	279	Dist Secondary - OH	Equipment Failure	Connection(i.e. Loose)	1	279	15943
2413925	1	3/6/2018	14:31	19:40	308	Dist Primary - OH	Unknown	Unselected	1	308	15701
2414016	1	3/6/2018	16:11	21:48	336	Dist Primary - OH	Tree Row - Down	Unselected	1	336	15867
2414025	1	3/6/2018	16:19	21:05	286	Dist Secondary - OH	Equipment Failure	Service	1	286	14261
2414037	1	3/6/2018	16:36	20:21	225	Dist Secondary - OH	Tree Outside ROW - Down	Unselected	1	225	15010
2414075	1	3/6/2018	17:21	19:45	144	Dist Secondary - URD	Equipment Failure	Cable	1	144	15130
2414107	1	3/6/2018	18:06	19:00	53	Dist Secondary - UG	Unknown	Unselected	1	53	15702
2414115	1	3/6/2018	18:23	0:29	366	Dist Secondary - OH	Tree Outside ROW - Limb	Unselected	1	366	14767
2414160	1	3/6/2018	19:37	21:24	107	Dist Primary - OH	Equipment Failure	Wire - Covered	258	27,606	348
2414214	1	3/6/2018	19:56	21:40	104	Dist Primary - OH	Unknown	Unselected	126	13,104	327
2414211	1	3/6/2018	20:03	2:09	366	Dist Secondary - OH	Tree Outside ROW - Down	Unselected	1	366	14900
2414553	1	3/7/2018	3:28	4:31	63	Dist Primary - OH	Equipment Failure	Wire - Bare	1,856	116,897	14758
2414628	1	3/7/2018	3:28	5:41	133	Dist Primary - OH	Equipment Failure	Wire - Bare	95	12,643	14758
2414629	1	3/7/2018	3:28	5:49	141	Dist Primary - OH	Equipment Failure	Wire - Bare	206	29,053	14758
2414653	1	3/7/2018	7:20	16:06	526	Dist Secondary - OH	Weather / Wind	Unselected	1	526	101
2414743	1	3/7/2018	9:39	11:43	124	Dist Primary - OH	Tree Outside ROW - Limb	Unselected	79	9,796	14016
2414767	1	3/7/2018	10:12	16:44	392	Dist Secondary - OH	Weather / Wind	Unselected	1	392	14766
2414814	1	3/7/2018	11:09	13:24	134	Dist Secondary - OH	Tree Outside ROW - Limb	Unselected	1	134	14135
2414992	1	3/7/2018	15:43	21:14	331	Dist Primary - OH	Tree Outside ROW - Limb	Unselected	9	2,979	14717
2415020	1	3/7/2018	16:34	19:45	191	Network	Equipment Failure	Meter	1	191	14535
2415106	1	3/7/2018	23:03	23:31	28	Dist Primary - OH	Tree Outside ROW - Limb	Unselected	1	28	490
2415123	1	3/8/2018	2:54	10:41	467	Dist Primary - UG	Unknown	Unselected	17	7,939	233
2415201	1	3/8/2018	9:32	14:16	284	Dist Secondary - UG	Equipment Failure	Cable	1	284	14555
2415219	1	3/8/2018	10:04	11:33	89	Dist Secondary - OH	Equipment Failure	Connection(i.e. Loose)	1	89	451
2415390	1	3/8/2018	13:44	15:55	131	Dist Secondary - OH	Equipment Failure	Connection(i.e. Loose)	1	131	15174
2415410	1	3/8/2018	14:16	18:20	244	Dist Secondary - OH	Tree Outside ROW - Limb	Unselected	6	1,462	15706
2415417	1	3/8/2018	14:37	14:57	20	Dist Primary - OH	Tree Outside ROW - Down	Unselected	216	4,320	14132
2415573	1	3/8/2018	18:58	19:53	54	Dist Secondary - OH	Tree Outside ROW - Limb	Unselected	1	54	15009
2415578	1	3/8/2018	19:12	19:38	26	Dist Secondary - OH	Equipment Failure	Service	1	26	15707
2415665	1	3/9/2018	9:02	10:20	78	Dist Secondary - OH	Equipment Failure	Connection(i.e. Loose)	1	78	387
2415787	1	3/9/2018	12:34	20:15	461	Dist Primary - OH	Equipment Failure	Cutout	1	461	15001
2415867	1	3/9/2018	16:10	17:15	64	Dist Secondary - UG	Vandalism	Meter	1	64	15701
2415870	1	3/9/2018	16:14	20:41	267	Network	Equipment Failure	Cable	1	267	15385
2415885	1	3/9/2018	17:02	21:57	294	Dist Secondary - OH	Equipment Failure	Connection(i.e. Loose)	1	294	15710
2415905	1	3/9/2018	18:16	19:00	44	Dist Secondary - OH	Tree Outside ROW - Down	Unselected	1	44	15943
2415947	1	3/10/2018	5:33	7:09	96	Dist Secondary - OH	Equipment Failure	Connection(i.e. Loose)	1	96	15010
2416110	1	3/11/2018	11:01	12:33	92	Dist Primary - OH	Unknown	Unselected	20	1,840	15706
2416185	1	3/11/2018	20:13	21:47	94	Dist Secondary - OH	Equipment Failure	Connection(i.e. Loose)	1	94	15801
2416196	1	3/11/2018	23:41	1:30	109	Dist Secondary - OH	Equipment Failure	Wire - Bare	1	109	15199
2416276	1	3/12/2018	9:40	13:05	205	Dist Secondary - OH	Equipment Failure	Connection(i.e. Loose)	1	205	15010
2416316	1	3/12/2018	10:46	11:35	49	Dist Primary - OH	Tree Outside ROW - Limb	Unselected	8	392	52
2416427	1	3/12/2018	14:30	16:56	145	Dist Primary - OH	Weather / Wind	Unselected	26	3,772	15172
2416512	1	3/12/2018	22:20	23:28	68	Dist Primary - OH	Unknown	Unselected	8	541	14017
2416629	1	3/13/2018	11:18	13:00	101	Dist Secondary - UG	Equipment Failure	Service	1	101	15702
2416712	1	3/13/2018	14:34	17:41	186	Dist Secondary - URD	Equipment Failure	Meter	1	186	15166
2417076	1	3/14/2018	16:39	17:20	41	Dist Secondary - UG	Equipment Failure	Cable	1	41	15762
2417104	1	3/14/2018	18:29	20:10	100	Dist Primary - OH	Equipment Failure	Fuse	1	100	366
2417120	1	3/14/2018	19:39	20:57	77	Dist Primary - OH	Equipment Failure	Cutout	1	77	383
2417125	1	3/14/2018	20:05	22:11	125	Dist Secondary - UG	Equipment Failure	Meter	1	125	15764
2417143	1	3/14/2018	21:41	23:49	128	Dist Secondary - OH	Equipment Failure	Connection(i.e. Loose)	1	128	15006
2417166	1	3/14/2018	23:27	23:56	28	Dist Secondary - OH	Equipment Failure	Connection(i.e. Loose)	14	396	15006
2417247	1	3/15/2018	10:26	13:42	196	Dist Primary - OH	Foreign Contact	Unselected	1	196	369
2417571	1	3/16/2018	10:15	12:08	112	Dist Primary - OH	Equipment Failure	Connection(i.e. Loose)	16	1,797	15015
2417721	1	3/16/2018	16:22	18:47	145	Dist Secondary - OH	Vandalism	Unselected	1	145	387
2417881	1	3/17/2018	6:01	7:32	91	Dist Primary - UG	Unknown	Unselected	35	3,185	15204W
2417886	1	3/17/2018	7:59	10:22	143	Dist Secondary - OH	Equipment Failure	Connection(i.e. Loose)	1	143	386
2417920	0	3/17/2018	10:52	12:25	93	Dist Primary - OH	Equipment Failure	Wire - Covered	469	43,617	16001
2417920	0	3/17/2018	10:52	12:31	99	Dist Primary - OH	Equipment Failure	Wire - Covered	295	29,205	16001
2417920	1	3/17/2018	10:52	15:03	251	Dist Primary - OH	Equipment Failure	Wire - Covered	1	251	16001
2417930	1	3/17/2018	11:12	12:30	78	Dist Primary - OH	Weather / Wind	Unselected	1	78	16328
2417931	1	3/17/2018	11:12	12:59	108	Dist Primary - OH	Weather / Wind	Unselected	1	108	16329
2417932	1	3/17/2018	11:12	12:59	108	Dist Primary - OH	Weather / Wind	Unselected	1	108	16331
2417945	1	3/17/2018	11:54	12:59	64	Dist Primary - OH	Weather / Wind	Unselected	1	64	16327
2417948	1	3/17/2018	12:11	16:10	239	Dist Primary - OH	Equipment Failure	Transformer	20	4,780	15011
2417959	1	3/17/2018	12:46	15:37	171	Dist Primary - UG	Equipment Failure	Cable	72	12,312	15703
2418004	1	3/17/2018	12:46	15:48	182	Dist Primary - UG	Equipment Failure	Cable	9	1,638	15703
2418010	1	3/17/2018	12:46	16:20	214	Dist Primary - UG	Equipment Failure	Cable	13	2,782	15703
2418011	1	3/17/2018	12:46	17:17	271	Dist Primary - UG	Equipment Failure	Cable	78	21,138	15703
2417989	1	3/17/2018	14:36	17:33	176	Dist Secondary - OH	Equipment Failure	Cable	1	176	372
2418273	1	3/19/2018	8:22	13:18	296	Dist Secondary - OH	Motor Vehicle	Unselected	1	296	14031
2418182	1	3/19/2018	9:33	11:08	94	Dist Secondary - OH	Equipment Failure	Wire - Bare	1	94	15176
2418403	1	3/19/2018	16:10	16:50	39	Dist Secondary - OH	Equipment Failure	Connection(i.e. Loose)	1	39	14711

2018 Outage Reporting to the Public Service Commission of the District of Columbia
Data Through April 30, 2018
MED Inclusive (All Sustained Interruptions)

Event ID	Nested ?	Date of Outage	Begin Time	End Time	Outage Duration	Construction	Outage Cause	Equipment Type	Customers Affected	Customer Minutes	Feeder
2418434	1	3/19/2018	18:06	19:32	86	Dist Secondary - OH	Equipment Failure	Connection(i.e. Loose)	1	86	368
2418465	1	3/19/2018	21:38	23:11	93	Dist Primary - OH	Fire	Unselected	18	1,674	489
2418533	1	3/20/2018	8:14	9:08	53	Dist Secondary - UG	Equipment Failure	Service	1	53	15197
2418602	1	3/20/2018	11:53	14:27	154	Dist Secondary - UG	Equipment Failure	Cable	1	154	15197
2418683	1	3/20/2018	17:23	0:06	403	Dist Secondary - UG	Equipment Failure	Cable	1	403	15702
2418699	1	3/20/2018	18:56	19:51	55	Dist Primary - OH	Motor Vehicle	Unselected	1	55	15001
2418754	1	3/20/2018	21:25	22:20	55	Dist Secondary - UG	Equipment Failure	Cable	17	935	15702
2418772	1	3/21/2018	5:53	12:00	367	Dist Secondary - UG	Weather / Salt	Unselected	1	367	15986
2418877	1	3/21/2018	9:55	10:07	12	Dist Secondary - UG	Equipment Failure	Meter	1	12	15762
2418886	1	3/21/2018	10:10	14:30	260	Dist Secondary - UG	Equipment Failure	Meter	1	260	15874
2419199	1	3/21/2018	13:30	18:00	270	Dist Primary - OH	Tree Outside ROW - Down	Unselected	9	2,430	14133
2419237	1	3/21/2018	14:04	18:30	265	Dist Secondary - UG	Weather / Salt	Unselected	1	265	15708
2419393	1	3/21/2018	15:31	18:47	195	Dist Secondary - OH	Tree Outside ROW - Limb	Unselected	1	195	15944
2419526	1	3/21/2018	18:04	19:50	106	Dist Secondary - UG	Equipment Failure	Cable	1	106	15204W
2419541	1	3/21/2018	18:21	19:50	89	Dist Secondary - UG	Equipment Failure	Cable	83	7,387	15204W
2419598	1	3/21/2018	20:56	21:02	7	Dist Primary - OH	Equipment Failure	Connection(i.e. Loose)	1	7	15199
2419635	1	3/22/2018	0:59	1:40	41	Dist Secondary - UG	Equipment Failure	Cable	1	41	15986
2419674	1	3/22/2018	9:05	15:00	354	Dist Secondary - UG	Equipment Failure	Cable	1	354	223
2419701	1	3/22/2018	10:02	11:37	94	Network	Equipment Failure	Connection(i.e. Loose)	1	94	14404
2419865	1	3/22/2018	11:42	16:32	291	Dist Secondary - OH	Equipment Failure	Connection(i.e. Loose)	9	2,616	87
2419757	1	3/22/2018	11:49	12:32	43	Dist Primary - OH	Equipment Failure	Wire - Bare	709	30,487	14035
2419963	1	3/23/2018	7:44	8:47	63	Dist Primary - OH	Unknown	Unselected	10	630	14765
2420007	1	3/23/2018	9:45	14:18	272	Dist Secondary - UG	Equipment Failure	Cable	1	272	14057
2420050	1	3/23/2018	11:23	13:23	120	Dist Secondary - URD	Equipment Failure	Meter	1	120	15094
2420132	1	3/23/2018	15:37	21:54	376	Dist Secondary - OH	Equipment Failure	Meter	1	376	14031
2420162	1	3/23/2018	17:28	19:39	131	Dist Primary - OH	Foreign Contact	Unselected	1	131	15173
2420209	1	3/23/2018	21:37	22:30	53	Dist Secondary - OH	Equipment Failure	Meter	1	53	309
2420230	1	3/24/2018	4:07	10:46	399	Dist Secondary - OH	Tree ROW - Limb	Unselected	5	1,994	451
2420234	1	3/24/2018	4:15	12:57	522	Dist Primary - OH	Motor Vehicle	Unselected	9	4,694	451
2420317	1	3/24/2018	12:03	13:14	71	Dist Primary - OH	Motor Vehicle	Unselected	62	4,401	15707
2420382	1	3/24/2018	18:34	20:08	94	Dist Secondary - OH	Equipment Failure	Service	1	94	15801
2420392	1	3/24/2018	20:35	0:06	211	Dist Primary - OH	Equipment Failure	Bushing	12	2,532	308
2420446	1	3/25/2018	10:55	19:30	514	Dist Secondary - UG	Equipment Failure	Cable	1	514	15761
2420532	1	3/26/2018	3:49	6:17	148	Dist Primary - OH	Motor Vehicle	Unselected	12	1,773	14261
2420721	1	3/26/2018	14:32	18:25	233	Dist Secondary - OH	Vandalism	Unselected	1	233	97
2420826	1	3/27/2018	4:03	4:40	37	Network	Equipment Failure	Switch	119	4,403	14574
2420938	1	3/27/2018	8:34	13:43	309	Dist Primary - UG	Equipment Failure	Fuse	1	309	15462
2421000	1	3/27/2018	8:34	14:25	351	Dist Primary - UG	Equipment Failure	Fuse	1	351	15462
2420854	1	3/27/2018	8:34	15:10	395	Dist Primary - UG	Equipment Failure	Fuse	1	395	15461
2421045	1	3/27/2018	17:52	19:38	105	Dist Secondary - UG	Equipment Failure	Cable	23	2,420	14731
2421046	1	3/27/2018	17:55	21:10	195	Dist Secondary - UG	Equipment Failure	Meter	1	195	15763
2421091	1	3/28/2018	0:19	1:07	48	Dist Primary - UG	Equipment Failure	Switch	1	48	16327
2421090	1	3/28/2018	0:19	1:07	48	Dist Primary - UG	Equipment Failure	Switch	1	48	16328
2421108	1	3/28/2018	7:28	8:39	71	Dist Primary - OH	Animal/Squirrel	Unselected	18	1,278	14767
2421120	1	3/28/2018	8:08	9:35	86	Dist Primary - UG	Unknown	Unselected	8	689	14733
2421152	1	3/28/2018	9:23	11:44	141	Dist Secondary - OH	Vandalism	Meter	1	141	15709
2421351	1	3/28/2018	20:53	21:11	18	Dist Primary - OH	Equipment Failure	Wire - Bare	1	18	14133
2421563	1	3/29/2018	11:10	13:45	155	Dist Primary - UG	Equipment Failure	Fuse	59	9,145	15761
2421737	1	3/29/2018	19:06	23:57	290	Dist Secondary - UG	Equipment Failure	Meter	1	290	15986
2421858	1	3/30/2018	7:57	8:56	59	Dist Primary - UG	Equipment Failure	Fuse	141	8,319	14135
2421858	0	3/30/2018	7:57	9:05	68	Dist Primary - UG	Equipment Failure	Fuse	692	47,056	14135
2421858	0	3/30/2018	7:57	9:39	102	Dist Primary - UG	Equipment Failure	Fuse	74	7,548	14135
2421921	1	3/30/2018	9:41	13:39	237	Dist Primary - UG	Equipment Failure	Fuse	73	17,325	14135
2422041	1	3/30/2018	9:41	16:32	410	Dist Primary - UG	Equipment Failure	Fuse	1	410	14135
2422103	1	3/30/2018	17:11	18:46	94	Dist Secondary - URD	Employee	Unselected	1	94	15130
2422125	1	3/30/2018	18:47	19:31	44	Dist Secondary - UG	Vandalism	Meter	1	44	15206
2422185	1	3/31/2018	3:49	4:46	57	Dist Secondary - OH	Equipment Failure	Service	3	171	14765
2422206	1	3/31/2018	9:04	10:31	87	Network	Equipment Failure	Cable	342	29,754	14019
2422210	1	3/31/2018	9:19	10:31	72	Network	Equipment Failure	Cable	1	72	14020
2422496	1	4/2/2018	9:23	11:00	97	Dist Secondary - UG	Vandalism	Unselected	1	97	15462
2422683	1	4/2/2018	17:23	21:49	265	Network	Equipment Failure	Cable	1	265	14535
2422797	1	4/3/2018	10:04	10:15	11	Dist Secondary - OH	Vandalism	Unselected	1	11	323
2422940	1	4/3/2018	16:42	18:44	122	Dist Secondary - OH	Equipment Failure	Service	1	122	15177
2423034	1	4/4/2018	9:43	11:00	77	Dist Secondary - UG	Unknown	Unselected	1	77	14713
2423158	0	4/4/2018	14:17	15:39	82	Dist Primary - OH	Weather / Wind	Wire - Bare	219	17,958	488
2423158	1	4/4/2018	14:17	15:15	58	Dist Primary - OH	Weather / Wind	Wire - Bare	96	5,568	15003
2423158	0	4/4/2018	14:17	15:39	82	Dist Primary - OH	Weather / Wind	Wire - Bare	1,188	97,416	15003
2423162	1	4/4/2018	14:19	15:15	56	Dist Primary - OH	Weather / Wind	Wire - Bare	116	6,469	489
2423247	1	4/4/2018	15:03	18:49	226	Dist Secondary - OH	Weather / Wind	Unselected	23	5,187	15198
2423260	1	4/4/2018	15:11	15:41	30	Dist Primary - OH	Weather / Wind	Unselected	36	1,073	15013
2423383	0	4/4/2018	16:20	16:55	35	Dist Primary - OH	Weather / Wind	Wire - Bare	219	7,738	488
2423383	0	4/4/2018	16:20	16:55	35	Dist Primary - OH	Weather / Wind	Wire - Bare	138	4,876	489
2423383	0	4/4/2018	16:20	16:55	35	Dist Primary - OH	Weather / Wind	Wire - Bare	19	671	491
2423383	1	4/4/2018	16:20	16:55	35	Dist Primary - OH	Weather / Wind	Wire - Bare	1,282	45,297	15003
2423496	0	4/4/2018	17:44	19:12	88	Dist Primary - OH	Weather / Wind	Wire - Bare	219	19,272	488
2423496	1	4/4/2018	17:44	17:53	9	Dist Primary - OH	Weather / Wind	Wire - Bare	96	864	15003
2423496	0	4/4/2018	17:44	19:12	88	Dist Primary - OH	Weather / Wind	Wire - Bare	1,188	104,544	15003
2423512	0	4/4/2018	17:44	19:12	88	Dist Primary - OH	Weather / Wind	Unselected	219	19,163	488
2423512	1	4/4/2018	17:44	19:12	88	Dist Primary - OH	Weather / Wind	Unselected	738	64,575	15003
2423583	1	4/4/2018	20:05	20:43	38	Dist Secondary - OH	Equipment Failure	Meter	1	38	308
2423584	1	4/4/2018	20:12	22:32	140	Dist Secondary - OH	Weather / Wind	Unselected	1	140	15012
2423738	1	4/5/2018	10:54	11:14	20	Dist Secondary - OH	Equipment Failure	Connection(i.e. Loose)	1	20	14022
2423803	0	4/5/2018	11:49	13:04	75	Dist Primary - OH	Employee	Pole	48	3,600	14014

2018 Outage Reporting to the Public Service Commission of the District of Columbia
Data Through April 30, 2018
MED Inclusive (All Sustained Interruptions)

Event ID	Nested ?	Date of Outage	Begin Time	End Time	Outage Duration	Construction	Outage Cause	Equipment Type	Customers Affected	Customer Minutes	Feeder
2423803	1	4/5/2018	12:15	13:04	49	Dist Primary - OH	Employee	Pole	92	4,508	14014
2423889	1	4/5/2018	15:11	16:26	75	Dist Secondary - UG	Vandalism	Unselected	1	75	14004
2424119	1	4/6/2018	10:37	12:05	88	Network	Vandalism	Unselected	1	88	15322
2424477	1	4/8/2018	6:39	9:06	147	Dist Primary - OH	Equipment Failure	Transformer	11	1,617	15001
2424599	1	4/9/2018	9:06	15:30	384	Dist Primary - UG	Equipment Failure	Cable	1	384	14093
2424609	1	4/9/2018	9:42	10:39	57	Dist Secondary - OH	Vandalism	Unselected	1	57	15130
2424675	1	4/9/2018	11:18	14:22	184	Dist Secondary - OH	Tree Outside ROW - Limb	Unselected	1	184	14752
2424711	1	4/9/2018	13:04	19:36	392	Dist Secondary - OH	Equipment Failure	Wire - Bare	1	392	14987
2424867	1	4/10/2018	10:04	14:55	292	Dist Secondary - UG	Cable Cut - Billable	Unselected	1	292	16001
2425086	1	4/11/2018	4:10	5:30	79	Dist Primary - OH	Equipment Failure	Cutout	183	14,460	15703
2425097	1	4/11/2018	5:53	6:30	37	Dist Primary - OH	Equipment Failure	Cutout	183	6,771	15703
2425327	1	4/11/2018	19:38	20:46	67	Dist Secondary - OH	Vandalism	Unselected	1	67	14014
2425336	1	4/11/2018	20:24	21:39	74	Dist Secondary - OH	Equipment Failure	Meter	1	74	15166
2425788	1	4/13/2018	11:32	14:06	153	Dist Secondary - OH	Equipment Failure	Connection(i.e. Loose)	1	153	15172
2426057	1	4/14/2018	14:26	16:18	112	Dist Secondary - OH	Equipment Failure	Wire - Bare	1	112	14015
2426191	1	4/15/2018	8:14	9:29	74	Dist Primary - OH	Equipment Failure	Fuse	29	2,154	15015
2426229	1	4/15/2018	13:17	14:00	43	Dist Secondary - UG	Tree Outside ROW - Down	Unselected	1	43	15001
2426233	1	4/15/2018	13:32	14:52	79	Dist Primary - OH	Weather / Wind	Unselected	5	397	451
2426287	1	4/15/2018	16:16	17:47	91	Dist Primary - OH	Weather / Wind	Unselected	5	453	451
2426347	1	4/15/2018	20:07	21:36	88	Dist Secondary - OH	Equipment Failure	Wire - Bare	1	88	15198
2426353	1	4/15/2018	21:18	1:32	253	Dist Primary - OH	Tree Outside ROW - Down	Unselected	6	1,519	132
2426381	1	4/16/2018	0:33	7:18	405	Dist Secondary - UG	Equipment Failure	Cable	1	405	15998
2426420	1	4/16/2018	2:56	5:02	126	Dist Primary - OH	Equipment Failure	Crossarm	191	24,050	15198
2426490	1	4/16/2018	4:54	7:36	162	Dist Primary - URD	Equipment Failure	Transformer - Subsurface	6	972	14900
2426490	0	4/16/2018	4:54	8:40	226	Dist Primary - URD	Equipment Failure	Transformer - Subsurface	7	1,582	14900
2426591	1	4/16/2018	4:54	12:31	457	Dist Primary - URD	Equipment Failure	Transformer - Subsurface	3	1,371	14900
2426555	1	4/16/2018	7:52	15:40	468	Dist Secondary - UG	Tree Outside ROW - Down	Unselected	1	468	14765
2426601	1	4/16/2018	9:16	11:41	145	Dist Primary - OH	Unknown	Unselected	1	145	14900
2426615	1	4/16/2018	9:32	14:24	292	Dist Secondary - UG	Equipment Failure	Cable	1	292	14200
2426748	1	4/16/2018	10:37	13:56	199	Dist Primary - UG	Equipment Failure	Cable	76	15,124	15703
2426748	0	4/16/2018	10:37	14:52	255	Dist Primary - UG	Equipment Failure	Cable	134	34,170	15703
2426734	1	4/16/2018	13:23	18:00	276	Dist Secondary - UG	Equipment Failure	Cable	1	276	16003
2426859	1	4/16/2018	15:55	18:35	160	Dist Primary - UG	Equipment Failure	Cable	3	480	15295
2426972	1	4/17/2018	9:53	11:10	76	Dist Secondary - OH	Equipment Failure	Connection(i.e. Loose)	1	76	14035
2427034	1	4/17/2018	11:51	12:42	51	Dist Primary - OH	Animal/Squirrel	Unselected	1	51	15943
2427036	1	4/17/2018	12:00	14:10	130	Dist Primary - UG	Cable Cut - Billable	Unselected	156	20,280	16002
2427036	0	4/17/2018	12:00	14:19	139	Dist Primary - UG	Cable Cut - Billable	Unselected	118	16,402	16002
2427117	1	4/17/2018	14:55	16:59	124	Dist Secondary - OH	Vandalism	Unselected	1	124	14008
2427158	1	4/17/2018	18:00	18:51	52	Dist Secondary - OH	Foreign Contact	Unselected	1	52	383
2427379	1	4/18/2018	13:01	13:32	31	Dist Secondary - UG	Equipment Failure	Meter	1	31	14736
2427441	1	4/18/2018	18:14	20:29	135	Dist Secondary - OH	Equipment Failure	Connection(i.e. Loose)	1	135	292
2427522	1	4/19/2018	7:03	8:50	106	Dist Primary - OH	Animal/Squirrel	Unselected	14	1,490	15199
2427531	1	4/19/2018	8:44	10:00	75	Dist Secondary - UG	Equipment Failure	Meter	1	75	15204R
2427667	1	4/19/2018	14:00	19:00	300	Dist Secondary - OH	Equipment Failure	Connection(i.e. Loose)	1	300	43
2427687	1	4/19/2018	14:29	17:28	179	Dist Primary - OH	Weather / Wind	Unselected	20	3,578	15018
2427702	1	4/19/2018	15:09	23:05	476	Dist Primary - OH	Tree Outside ROW - Down	Unselected	4	1,904	14900
2427716	1	4/19/2018	15:39	17:08	89	Dist Primary - OH	Equipment Failure	Connection(i.e. Loose)	12	1,063	15014
2427845	1	4/19/2018	22:23	8:33	610	Dist Primary - OH	Tree Outside ROW - Down	Unselected	12	7,320	133
2427845	0	4/19/2018	23:56	0:08	12	Dist Primary - OH	Tree Outside ROW - Down	Unselected	15	180	133
2427865	1	4/20/2018	6:52	10:30	217	Dist Secondary - OH	Equipment Failure	Meter	1	217	308
2427931	1	4/20/2018	9:57	12:26	148	Dist Primary - URD	Unknown	Unselected	1	148	15867
2428188	1	4/21/2018	7:36	11:00	204	Dist Primary - UG	Equipment Failure	Cable	19	3,876	14200
2428246	1	4/21/2018	7:36	11:25	229	Dist Primary - URD	Equipment Failure	Cable	84	19,236	14200
2428379	1	4/22/2018	8:06	9:15	69	Dist Primary - OH	Animal/Squirrel	Unselected	18	1,234	14014
2428394	1	4/22/2018	10:10	10:33	23	Dist Primary - OH	Equipment Failure	Transformer	1	23	14900
2428741	1	4/23/2018	23:11	0:25	74	Dist Secondary - URD	Equipment Failure	Service	1	74	15094
2428754	0	4/24/2018	0:25	4:03	218	Dist Primary - UG	Equipment Failure	Transformer	5	1,090	15769
2428754	0	4/24/2018	2:53	3:09	16	Dist Primary - UG	Equipment Failure	Transformer	31	496	141
2428754	1	4/24/2018	2:53	3:09	16	Dist Primary - UG	Equipment Failure	Transformer	695	11,120	15769
2428940	1	4/24/2018	14:10	16:20	130	Dist Secondary - URD	Equipment Failure	Meter	1	130	14755
2429052	1	4/24/2018	14:55	18:43	228	Dist Primary - UG	Weather / Flood	Fuse	162	36,936	14732
2429052	0	4/24/2018	14:55	21:05	370	Dist Primary - UG	Weather / Flood	Fuse	283	104,710	14732
2429062	1	4/24/2018	22:14	23:14	60	Dist Secondary - OH	Tree Outside ROW - Limb	Unselected	1	60	14008
2429216	1	4/25/2018	12:36	13:28	52	Network	Employee	Unselected	1	52	14581
2429330	0	4/26/2018	1:50	7:59	369	Dist Primary - UG	Equipment Failure	Transformer - Subsurface	6	2,214	15991
2429330	1	4/26/2018	5:10	7:17	127	Dist Primary - UG	Equipment Failure	Transformer - Subsurface	275	34,925	15991
2429421	1	4/26/2018	10:19	10:38	19	Dist Primary - OH	Equipment Failure	Connection(i.e. Loose)	25	483	15012
2429500	1	4/26/2018	14:44	15:45	61	Dist Secondary - UG	Unknown	Unselected	1	61	15204R
2429609	1	4/27/2018	6:37	8:49	132	Dist Primary - OH	Tree ROW - Limb	Unselected	9	1,188	15944
2429712	1	4/27/2018	11:41	11:47	6	Dist Secondary - UG	Equipment Failure	Connection(i.e. Loose)	1	6	14731
2429796	1	4/27/2018	15:40	17:10	89	Dist Primary - OH	Equipment Failure	Fuse	15	1,338	15710
2429852	1	4/27/2018	19:40	20:33	53	Dist Secondary - UG	Equipment Failure	Meter	1	53	14362
2430043	1	4/28/2018	23:23	0:23	60	Dist Secondary - UG	Equipment Failure	Meter	1	60	14788
2430291	1	4/30/2018	12:44	13:16	32	Dist Primary - OH	Equipment Failure	Transformer	17	544	14900

YTD

Outage Cause "Other" or "Unknown" - Total 49
Sustained Outages - Total 668

2018 Outage Reporting to the Public Service Commission of the District of Columbia
 Data Through April 30, 2018
 MED Inclusive (All Sustained Interruptions)

Event ID	Nested ?	Date of Outage	Begin Time	End Time	Outage Duration	Construction	Outage Cause	Equipment Type	Customers Affected	Customer Minutes	Feeder
Percentage "Other" or "Unknown"								7%			

Attachment 1-1

2018 Non-Major Outage Reporting to the Public Service Commission of the District of Columbia

Report Sequence Number	Outage Sequence Number	Manhole Sequence Number	Month	Day of Outage	OH or UG	Outage Cause/Incident Description	Location	Quadrant	Ward	Time of Outage/ Incident	Actual Restoration Time	Duration of Outage Hours / min	Max No. of Cust. Affected	Feeder No.	Feeder No.
1	1		January	4	OH	Weather/Wind/Wires down/Replaced Wires/Restoring all load	Darrington Street e/o 6th Street, SE	SE	8	2046	0544 (1/5)	8 58	2	183	
1	2		January	4	OH	Equipment failure/Cable fault/Transformer failed/ Replaced cable and transformer/All load restored	Naylor Road n/o Gainesville Street, SE	SE	7	1425	0100 (1/5)	10 35	1	15173	
2	3		January	5	UG	Equipment failure/Transformers failed/Temporary repairs	5th Street and M Street, NW	NW	6	651	234	19 43	202	15206	
3	4		January	7	OH	Load/Blown fuse/Replaced fuse/Restored all load	61st Street and Clay Street, NE	NE	7	346	524	1 38	128	366	
4	5		January	8	OH	Animal/Squirrel/Fuse blown/Replaced fuse/All load restored	12th Street s/o Savannah Street, SE	SE	8	1051	1145	0 54	103	15175	
5	6		January	9	UG	Cable cut/Fuse blown/Isolated fault/Made tie/ Restored load	13th Street n/o Q Street, NW	NW	1	1043	1854	8 11	85	15204W	15207W
5			January	9	UG	See Above	13th Street n/o Q Street, NW	NW	2	1043	1854	9 11	212	15204W	15207W
5			January	9	UG	See Above	13th Street n/o Q Street, NW	NW	6	1043	1854	8 11	128	15204W	15207W
5	7		January	9	UG	Equipment failure/Cable fault/Feeder tripped/ Isolated fault/Made tie/All load restored	South Capitol Street, SE n/o R Street, SW	SW	6	1030	1254	2 24	1229	16000	
6	8		January	10	OH	Motor Vehicle/Pole broken/Feeder tripped/Isolated fault/Restored load	Half Street s/o Water Street, SW	SW	6	1142	1243	1 1	1650	16001	
7	9		January	12	OH	Equipment failure/Wires down/Feeders tripped/Reinstalled wires/Load restored	Blair Road and Oglethorpe Street, NW	NW	4	437	10337	6 0	1525	15014	15013
7			January	12	OH	See above	See above	NW	5	437	1037	6 0	1,444	15014	15013
7	10		January	12	OH	Equipment failure/Switch opened/Tap burned off regulator/Isolated fault/By-passed switch/Load restored	Harewood Street s/o Taylor Street, NE	NE	5	1142	15001	3 19	466	15013	
8	11		January	15	UG	Equipment failure/Cable failure/Permanent repairs made to cable/load restored	Randolph Place s/o 1st Street, NW	NW	5	46	57	0 10	125	14004	
9	12		January	18	UG	Equipment failure/Cable fault/Blown URD slip on/ made new slip on/Restored all load	15th Street and Pennsylvania Avenue, SE	SE	6	1821	220 (1/19)	7 59	205	227	
9	13		January	18	UG	Equipment failure/Fuse blown/Corroded fuse holder found in trans closure/Replaced fuse/ Restored all load	Summit Court and Fort Lincoln Drive, NE	NE	5	1128	1810	6 42	128	15094	
10	14		January	20	OH	Motor Vehicle/Pole broken/Wires down/Replaced pole/Reattached wires/All load restored	Minnesota Avenue se/o Nash Place, SE	SE	7	1815	2350	5 36	240	479	
11	15		January	25	UG	Equipment failure/Cable failure/Found cable burned at duct edge/Replaced cable/All load restored	Neal Street SW/o Montello Avenue, NE	NE	5	616	1316	7 0	100	14712	
12	16		January	29	OH	Equipment failure/Feeder tripped/Regulator failed /Isolated regulator/Made tie/Load restored	Allison Street and Iowa Avenue, NW	NW	4	505	735	2 30	1369	15197	
13	17		February	3	OH	Motor Vehicle/Pole broken/Fuses blown/Tie failed/ Replaced fuses/Load restored/Referred to OH for permanent repairs	Naylor Road, SE n/o Denver Street, SE	SE	8	341	618	2 36	421	15173	
14	18		February	4	UG	Equipment failure/Cable fault/Replaced cable/All load restored	18th and Vernon Street, NW	NW	1	1903	354 (2/5)	8 51	11	14736	
14	19		February	4	OH	Equipment failure/Feeder tripped/Blown pothead/Replaced pot head/Load restored	Rodman Street w/o Tilden Street, NW	NW	3	1616	0100 (2/5)	8 44	273	144	
15	20		February	6	UG	Equipment failure/Transformer failed/Fuse blown /Replaced Transformer/Replaced fuse/All load restored	8th and G Streets, SE	SE	6	1257	1827	5 3	223	16002	
16	21		February	12	UG	Equipment failure/Cable failure/Switch opened /Isolated fault/Made tie/All load restored	Van Ness Street, and Wisconsin Avenue, NW	NW	3	1257	1454	1 57	494	309	
17	22		February	14	UG	Employee/Bus tripped/Employee inadvertently tripped a 13kV Bus/The Breaker was closed all load restored	12th and Irving Streets, NE	NE	5	942	953	0 12	3225	14008	
17			February	14	UG	See above	See above	NE	1	942	953	0 12	345	14008	
17	23		February	14	UG	Equipment failure/Feeder tripped/Stof box failed/Isolated stof box/Temporary repairs made/Load restored	14th Street, SE n/o K Street, SE	SE	6	2025	0347 (2/15)	7 22	445	212	
18	24		February	18	UG	Equipment failure/Transformer failed/Fuse Blown/ Replaced transformer/Replaced fuse/Load restored	Massachusetts Avenue e/o Warren Street, NW	NW	3	907	0044 (2/19)	15 37	3	14766	
19	25		February	19	UG	Equipment failure/Cable failure/Temporary repairs made/Load restored	4th and G Street, SE	SE	6	1032	2100	10 28	1	16003	
19	26		February	19	OH	Unknown/Blown fuse/Patrolled feeder no cause found/Replaced fuse/Load restored	Rhode Island Avenue and Franklin Street, NE	NE	5	818	951	1 33	142	14014	
20	27		February	20	OH	Equipment failure/Recloser tripped/Cable fault in riser/Isolated fault/Closed, all load restored	16th Street and Kalmia Road, NW	NW	4	1551	1659	1 8	1593	15199	
20	28	DC18-12	February	20	UG	Equipment failure/Cable failure/Replaced cable/Load restored	3200 block of N Street, NW	NW	2	2007	0500 (2/21)	8 53	3	14555	
21	29		February	21	OH	Motor vehicle/Three poles broken/Poles replaced/Load restored	South Dakota Avenue, and Bladensburg Road, NE	NE	5	750	2349	15 59	44	14016	
22	30		February	22	UG	Equipment failure/Module failed/Fuse blown/ Repaired module/Replaced fuse/Load restored	300 block of D Street, NE	NE	6	1252	1444	1 52	138	14787	
23	31		February	23	OH	Motor Vehicle/Pole struck/Wires down/Fuse blown/Isolated damage/Replaced fuse/Load restored	Mississippi Avenue, SE and Wayne Place, SE	SE	8	2234	2341	1 7	158	14755	
24	32		March	7	OH	Equipment failure/Wires down/Feeder tripped/ Permanent repairs made/Load restored	Danbury Street e/o Martin Luther King Jr. Avenue, SW	SW	8	328	549	2 21	2,156	14758	
24	33		March	7	OH	Weather/Wind/Wire down/Replaced service wire/Load restored	Macomb Street w/o 36th Street, NW	NW	3	720	1606	8 46	1	101	
25	34		March	17	OH	Equipment failure/Wire down/ Recloser Tripped/ Cut in clear/Closed, load restored	200 block of V Street, SW	SW	6	1052	1230	1 33	1634	16001	
25	35		March	17	UG	Equipment failure/Fuse blown/Cable fault/ Isolated cable fault/Load restored	1300 block of Bladensburg Road, NE	NE	5	1246	1537	2 51	183	15703	
26	36		March	24	OH	Motor vehicle/Pole broken/Transformer damaged/ Replaced pole/Replaced transformer	Ridge Road, SE n/o G Street, SE	SE	7	415	1257	8 42	9	451	
27	37		March	25	UG	Equipment failure/Cable failure/Duct damaged/ Isolated fault/Temporary repairs made	Florida Avenue, NW e/o 14th Street, NW	NW	1	1055	1930	8 35	1	15761	
28	38		March	27	UG	Equipment failure/Protector failed/Crew checked for safety/Feeder closed and held/All load restored	9th Street and D Street, NW	NW	2	403	440	0 37	119	14574	
29	39		March	30	UG	Equipment failure/Cable failure/Isolated fault/Made tie/Load restored	Ellicott Street, NW e/o Connecticut Avenue, NW	NW	3	757	939	1 42	907	14135	
30	40		March	31	UG	Equipment failure/Cable failure/Isolated fault/Made tie/Load restored	24th Place, NE w/o Bladensburg Road, NE	NE	5	904	1301	1 27	342	14019	
31	41		April	4	OH	Wind/Wires wrapped together/Feeder tripped /unwrapped wires/Load restored	4700 block AND 4800 block of 4th Street, NW	NW	4	1417	1539	1 22	1,641	15003	489
31	42		April	4	OH	Wind/Wires wrapped together/Feeder tripped /unwrapped wires/Load restored	4700 block AND 4800 block of 4th Street, NW	NW	4	1620	1655	0 35	1666	15003	
31	43		April	4	OH	Wind/Wires wrapped together/Feeder tripped /unwrapped wires/Installed space savers/Load restored	4700 block AND 4800 block of 4th Street, NW	NW	4	1744	1912	1 28	1503	15003	
32	44		April	5	OH	Employee/Pole down/Wires down/Fuse blown /Isolated downed wires/Replaced fuse/Load restored	1700 block of Hamilton Street, NE	NE	5	1149	1304	1 15	141	14014	
33	45		April	11	OH	Equipment failure/Feeder tripped/B phase cutout defective/Replace cutout/Load restored	1300 block of Bladensburg Road, NE	NE	5	410	530	2 15	183	15703	
34	46		April	16	UG	Equipment failure/Fuse blown/Cable fault/Isolated fault/replaced fuse/Load restored	19th Street and M Street, NE	NE	5	1037	1452	4 15	211	15703	
34	47		April	16	OH	Foreign contact/Fuse blown/Cross arm brace contacted fuse/Replaced fuse/Load restored	13th Street and Hamilton Street, NE	NE	5	256	505	2 9	191	15198	
35	48		April	17	UG	Cable cut/Fuse blown/Isolated fault/Made tie/Load restored	9th Street and G Street, SE	SE	6	1200	1419	2 19	279	16002	
36	49		April	19	OH	Vegetation/Tree on wires/Poles broken /Transformer failed/Replaced poles/ Replaced transformer	29th Street s/o Military Road, NW	NW	4	1509	0830 (4/20)	17 21	12	133	
37	50		April	21	UG	Equipment failure/Cable failure/Blown fuse /Isolated fault/Made tie/Load restored	3000 block of Gentry Court, NE	NE	5	736	1125	3 49	103	14200	
38	51		April	24	UG	Equipment failure/Transformer failed/Blown fuse /Isolated Transformer/Replaced fuse/Load restored	300 block of Bryant Street, NW	NW	1	253	306	0 13	730	15769	
38	52		April	24	UG	Unknown/Fuse blown/Replaced fuse/All load restored	1800 block of Belmont Road, NW	NW	1	1455	2105	5 10	446	14732	
39	53		April	26	UG	Equipment failure/Transformer failed/Blown fuse /Replaced transformer/Replaced fuse/Load restored	3200 block of Hiatt Place, NW	NW	5	150	800	6 10	282	15991	
			# of Outages	53			Customers Affected						29,601		

Attachment 1-2

2018 Non-Major Outage Reporting to the Public Service Commission of the District of Columbia

Report Sequence Number	Outage Sequence Number	Manhole Sequence Number*	Month	Day of Outage	OH or UG	Outage Cause/ Incident Description	Location	Quadrant	Ward	Time of Outage/ Incident	Actual Restoration Time	Duration of Outage Hours / min	Max No. of Cust. Affected	Feeder No.	Feeder No.
1	1		January	4	OH	Weather/Wind/Wires down/Replaced Wires/Restoring all load	Darrington Street e/o 6th Street, SE	SE	8	2046	0544 (1/5)	8 58	2	183	
1	2		January	4	OH	Equipment failure/Cable fault/Transformer failed/ Replaced cable and transformer/All load restored	Naylor Road n/o Gainsville Street, SE	SE	7	1425	0100 (1/5)	10 35	1	15173	
2	3		January	5	UG	Equipment failure/Transformers failed/Temporary repairs	5th Street and M Street, NW	NW	6	651	234	19 43	202	15206	
1/01/18 - 1/06/18		# of Outages			3					Customers Affected			205		
3	4		January	7	OH	Load/Blown fuse/Replaced fuse/Restored all load	61st Street and Clay Street, NE	NE	7	346	524	1 38	128	366	
4	5		January	8	OH	Animal/Squirrel/Fuse blown/Replaced fuse/All load restored	12th Street s/o Savannah Street, SE	SE	8	1051	1145	0 54	103	15175	
5	6		January	9	UG	Cable cut/Fuse blown/isolated fault/Made tie/ Restored load	13th Street n/o Q Street, NW	NW	1	1043	1854	8 11	85	15204W	15207W
5	5		January	9	UG	See Above	13th Street n/o Q Street, NW	NW	2	1043	1854	9 11	212	15204W	15207W
5	5		January	9	UG	See Above	13th Street n/o Q Street, NW	NW	6	1043	1854	8 11	128	15204W	15207W
5	7		January	9	UG	Equipment failure/Cable fault/Feeder tripped/ Isolated fault/Made tie/Restored load	South Capitol Street, SE n/o R Street, SW	SW	6	1030	1254	2 24	1229	16000	
6	8		January	10	OH	Motor Vehicle/Pole broken/Feeder tripped/Isolated fault/Restored	Half Street s/o Water Street, SW	SW	6	1142	1243	1 1	1650	16001	
7	9		January	12	OH	Equipment failure/Wires down/Feeders tripped/Reinstalled	Blair Road and Oglethorpe Street, NW	NW	4	437	1037	6 0	1525	15014	15013
7	7		January	12	OH	See above	See above	NW	5	437	1037	6 0	1444	15014	15013
7	10		January	12	OH	Equipment failure/Switch opened/ Tap burned off regulator/isolated	Harewood Street s/o Taylor Street, NE	NE	5	1142	15001	3 19	468	15013	
1/07/18 - 1/13/18		# of Outages			7					Customers Affected			6970		
8	11		January	15	UG	Equipment failure/Cable failure/Permanent repairs made to	Randolph Place s/o 1st Street, NW	NW	5	46	57	0 10	125	14004	
9	12		January	18	UG	Equipment failure/Cable fault/Blown URD slip on/ made new slip	15th Street and Pennsylvania Avenue, SE	SE	6	1821	220 (1/19)	7 59	205	227	
9	13		January	18	UG	Equipment failure/Fuse blown/Corroded fuse holder found in trans	Summit Court and Fort Lincoln Drive, NE	NE	5	1128	1810	6 42	128	15009	
10	14		January	20	OH	Motor Vehicle/Pole broken/Wires down/Replaced pole/Reattached wires/All load restored	Minnesota Avenue s/o Nash Place, SE	SE	7	1815	2350	5 36	240	479	
1/14/18 - 1/20/18		# of Outages			4					Customers Affected			698		
11	15		January	25	UG	Equipment failure/Cable failure/Found cable burned at duct	Neal Street s/o Montello Avenue, NE	NE	5	616	1316	7 0	100	14712	
1/21/18 - 2/27/18		# of Outages			1					Customers Affected			100		
12	16		January	29	OH	Equipment failure/Feeder tripped/Regulator failed /Isolated regulator/Made tie/Load restored	Allison Street and Iowa Avenue, NW	NW	4	505	735	2 30	1369	15197	
13	17		February	3	OH	Motor Vehicle/Pole broken/Fuses blown/Tie made/ Replaced fuses/Load restored/Referred to OH for permanent repairs	Naylor Road, SE n/o Denver Street, SE	SE	8	341	618	2 36	421	15173	
1/28/18 - 2/03/18		# of Outages			2					Customers Affected			1790		
14	18		February	4	UG	Equipment failure/Cable fault/Replaced cable/All load restored	18th And Vernon Street, NW	NW	1	1903	354 (2/5)	8 51	11	14736	
14	19		February	4	OH	Equipment failure/Feeder tripped/Blown pothead/Replaced pot head/Load restored	Rodman Street w/o Tilden Street, NW	NW	3	1616	0100 (2/5)	8 44	273	144	
15	20		February	6	UG	Equipment failure/Transformer failed/Fuse blown /Replaced Transformer/Replaced fuse/All load restored	8th and G Streets, SE	SE	6	1257	1827	5 3	223	16002	
2/04/18 - 2/10/18		# of Outages			3					Customers Affected			507		
16	21		February	12	UG	Equipment failure/Cable failure/Switch opened /Isolated fault/Made tie/All load restored	Van Ness Street, and Wisconsin Avenue, NW	NW	3	1257	1454	1 57	494	309	
17	22		February	14	UG	Employee/Bus tripped/Employee inadvertently tripped a 13kV Bus/The Breaker was closed all load restored	12th and Irving Streets, NE	NE	5	942	953	0 12	3225	14008	
17	17		February	14	UG	See above	See above	NE	1	942	953	0 12	345	14008	
17	23		February	14	UG	Equipment failure/Feeder tripped/Stof box failed/isolated stof box/Temporary repairs made/Load restored	14th Street, SE n/o K Street, SE	SE	6	2025	0347 (2/15)	7 22	445	212	
2/11/18 - 2/17/18		# of Outages			3					Customers Affected			4569		
18	24		February	18	UG	Equipment failure/Transformer failed/Fuse Blown/ Replaced transformer/Replaced fuse/Load restored	Massachusetts Avenue e/o Warren Street, NW	NW	3	907	0044 (2/19)	15 37	3	14766	
19	25		February	19	UG	Equipment failure/Cable failure/Temporary repairs made/Load restored	4th and G Street, SE	SE	6	1032	2100	10 28	1	16003	
19	26		February	19	OH	Unknown/Blown fuse/Patrolled feeder no cause found/Replaced fuse/Load restored	Rhode Island Avenue and Franklin Street, NE	NE	5	818	951	1 33	142	14014	
20	27		February	20	OH	Equipment failure/Recloser tripped/Cable fault in rise/isolated fault/Closed, all load restored	16th Street and Kalmia Road, NW	NW	4	1551	1659	1 8	1593	15199	
20	28	DC18-12	February	20	UG	Equipment failure/Cable failure/Replaced cable/Load restored	3200 block of N Street, NW	NW	2	2007	0500 (2/21)	8 53	3	14555	
21	29		February	21	OH	Motor vehicle/Three poles broken/Poles replaced/Load restored	South Dakota Avenue, and Bladensburg Road, NE	NE	5	750	2349	15 59	44	14016	
22	30		February	22	UG	Equipment failure/Module failed/Fuse blown/ Repaired module/Replaced fuse/Load restored	300 block of D Street, NE	NE	6	1252	1444	1 52	138	14787	
23	31		February	23	OH	Motor Vehicle/Pole struck/Wires down/Fuse blown/isolated damage/Replaced fuse/Load restored	Mississippi Avenue, SE and Wayne Place, SE	SE	8	2234	2341	1 7	158	14755	
2/18/18 - 2/24/18		# of Outages			8					Customers Affected			2082		
2/25/18 - 3/03/18		# of Outages			0					Customers Affected			0		
24	32		March	7	OH	Equipment failure/Wires down/Feeder tripped/ Permanent repairs made/Load restored	Danbury Street e/o Martin Luther King Jr. Avenue, SW	SW	8	328	549	2 21	2,156	14758	
24	33		March	7	OH	Weather/Wind/Wire down/Replaced service wire/Load restored	Macomb Street w/o 36th Street, NW	NW	3	720	1606	8 46	1	101	
3/04/18 - 3/10/18		# of Outages			2					Customers Affected			2187		
25	34		March	17	OH	Equipment failure/Wire down/ Recloser Tripped/ Cut in clear/Closed, load restored	200 block of V Street, SW	SW	6	1052	1230	1 33	1634	16001	
25	35		March	17	UG	Equipment failure/Fuse blown/Cable fault/ Isolated cable fault/Load restored	1300 block of Bladensburg Road, NE	NE	5	1246	1537	2 51	183	15703	
3/11/18 - 3/17/18		# of Outages			2					Customers Affected			1817		
26	36		March	24	OH	Motor vehicle/Pole broken/Transformer damaged/ Replaced pole/Replaced transformer	Ridge Road, SE n/o G Street, SE	SE	7	415	1257	8 42	9	451	
3/18/18 - 3/24/18		# of Outages			1					Customers Affected			9		
27	37		March	25	UG	Equipment failure/Cable failure/Duct damaged/ Isolated fault/Temporary repairs made	Florida Avenue, NW e/o 14th Street, NW	NW	1	1055	1930	8 35	1	15761	
28	38		March	27	UG	Equipment failure/Protector failed/Crew checked for safety/Feeder closed and held/All load restored	9th Street and D Street, NW	NW	2	403	440	0 37	119	14574	
29	39		March	30	UG	Equipment failure/Cable failure/Isolated fault/Made tie/Load restored	Ellicott Street, NW e/o Connecticut Avenue, NW	NW	3	757	939	1 42	907	14135	
30	40		March	31	UG	Equipment failure/Cable failure/Isolated fault/Made tie/Load restored	24th Place, NE w/o Bladensburg Road, NE	NE	5	904	1301	1 27	342	14019	
3/25/18 - 3/31/18		# of Outages			4					Customers Affected			1369		
31	41		April	4	OH	Wind/Wires wrapped together/Feeder tripped /unwrapped wires/Load restored	4700 block AND 4800 block of 4th Street, NW	NW	4	1417	1539	1 22	1,641	15003	489
31	42		April	4	OH	Wind/Wires wrapped together/Feeder tripped /unwrapped wires/Load restored	4700 block AND 4800 block of 4th Street, NW	NW	4	1620	1655	0 35	1666	15003	
31	43		April	4	OH	Wind/Wires wrapped together/Feeder tripped /unwrapped wires/Installed space savers/Load restored	4700 block AND 4800 block of 4th Street, NW	NW	4	1744	1912	1 28	1503	15003	
32	44		April	5	OH	Employee/Pole down/Wires down/Fuse blown /Isolated downed wires/Replaced fuse/Load restored	1700 block of Hamilton Street, NE	NE	5	1149	1304	1 15	141	14014	
4/01/18 - 4/07/18		# of Outages			4					Customers Affected			4951		
33	45		April	11	OH	Equipment failure/Feeder tripped/B phase cutout defective/Replaced cutout/Load restored	1300 block of Bladensburg Road, NE	NE	5	410	530	2 15	183	15703	
4/08/18 - 4/14/18		# of Outages			1					Customers Affected			183		
34	46		April	16	UG	Equipment failure/Fuse blown/Cable fault/Isolated fault/replaced fuse/Load restored	19th Street and M Street, NE	NE	5	1037	1452	4 15	211	15703	
34	47		April	16	OH	Foreign contact/Fuse blown/Cross arm brace contacted fuse/Replaced fuse/Load restored	13th Street and Hamilton Street, NE	NE	5	256	505	2 9	191	15198	
35	48		April	17	UG	Cable cut/Fuse blown/isolated fault/Made tie/Load restored	8th Street and G Street, SE	SE	6	1200	1419	2 19	279	16002	
36	49		April	19	OH	Vegetation/Tree on wires/Poles broken /Transformer failed/Replaced poles/ Replaced transformer	29th Street s/o Military Road, NW	NW	4	1509	0830 (4/20)	17 21	12	133	
37	50		April	21	UG	Equipment failure/Cable failure/Blown fuse /Isolated fault/Made tie/Load restored	3000 block of Gentrin Court, NE	NE	5	736	1125	3 49	103	14200	
4/15/18 - 4/21/18		# of Outages			5					Customers Affected			796		

2018 Non-Major Outage Reporting to the Public Service Commission of the District of Columbia

Report Sequence Number	Outage Sequence Number	Manhole Sequence Number*	Month	Day of Outage	UG or UG	Outage Cause/ Incident Description	Location	Quadrant	Ward	Time of Outage/ Incident	Actual Restoration Time	Duration of Outage Hours / min	Max No. of Cust. Affected	Feeder No.	Feeder No.
38	51		April	24	UG	Equipment failure/Transformer failed/Blown fuse /Isolated Transformer/Replaced fuse/Load restored	300 block of Bryant Street, NW	NW	1	253	306	0 13	730	15769	
38	52		April	24	UG	Unknown/Fuse blown/Replaced fuse/All load restored	1800 block of Belmont Road, NW	NW	1	1455	2105	5 10	446	14732	
39	53		April	26	UG	Equipment failure/Transformer failed/Blown fuse /Replaced transformer/Replaced fuse/Load restored	3200 block of Hiatt Place, NW	NW	5	150	800	6 10	282	15991	
4/22/18 - 4/28/18				# of Outages	3								1458		
												Customers Affected			
4/29/18 - 4/30/18				# of Outages	0								0		
												Customers Affected			

Attachment 1-3

2018 Non-Major Outage Reporting to the Public Service Commission of the District of Columbia

Report Sequence Number	Outage Sequence Number	Manhole Sequence Number	Month	Day of Outage	OH or UG	Outage Cause/ Incident Description	Location	Quantum	Ward	Time of Outage/ Incident	Actual Restoration Time	Duration of Outage Hours / min	Max No. of Cust. Affected	Feeder No.	Feeder No.
1	1		January	4	OH	Weather/Wires down/Replaced Wires/Restoring all load and transformer/All load restored	Darrington Street e/o 6th Street, SE	SE	8	2046	0544 (1/5)	8 58	2	183	
1	2		January	4	OH	Equipment failure/Cable fault/Transformer failed/ Replaced cable and transformer/All load restored	Naylor Road n/o Gainesville Street, SE	SE	7	1425	0100 (1/5)	10 35	1	15173	
2	3		January	5	UG	Equipment failure/Transformers failed/Temporary repairs made/Load restored	5th Street and M Street, NW	NW	6	651	234	19 43	202	15206	
3	4		January	7	OH	Load/Blown fuse/Replaced fuse/Restored all load	61st Street and Clay Street, NE	NE	7	346	524	1 38	128	366	
4	5		January	8	OH	Animal/Squirrel/Fuse blown/Replaced fuse/All load restored	12th Street s/o Savannah Street, SE	SE	8	1051	1145	0 54	103	15175	
5	6		January	9	UG	Cable cut/Fuse blown/Isolated fault/Made tie/ Restored load	13th Street n/o Q Street, NW	NW	1	1043	1854	8 11	85	15204W	15207W
5	6		January	9	UG	See Above	13th Street n/o Q Street, NW	NW	2	1043	1854	9 11	212	15204W	15207W
5	6		January	9	UG	See Above	13th Street n/o Q Street, NW	NW	6	1043	1854	8 11	128	15204W	15207W
5	7		January	9	UG	Equipment failure/Cable fault/Feeder tripped/ Isolated fault/Made Motor Vehicle/Pole broken/Feeder tripped/Isolated fault/Restored load	South Capitol Street, SE n/o R Street, SW	SW	6	1030	1254	2 24	1229	16000	
6	8		January	10	OH	Equipment failure/Wires down/Feeders tripped/Reinstalled wires/Load restored	Blair Road and Oglethorpe Street, NW	NW	4	437	10337	6 0	1525	15014	15013
7	9		January	12	OH	See above	See above	NW	5	437	1037	6 0	1,444	15014	15013
7	10		January	12	OH	Equipment failure/Switch opened/Tap burned off regulator/Isolated fault/By-passed switch/Load restored	Harewood Street s/o Taylor Street, NE	NE	5	1142	15001	3 19	466	15013	
8	11		January	15	UG	Equipment failure/Cable failure/Permanent repairs made to cable/All load restored	Randolph Place s/o 1st Street, NW	NW	5	46	57	0 10	125	14004	
9	12		January	18	UG	Equipment failure/Cable fault/Blown URD slip on/ made new slip	15th Street and Pennsylvania Avenue, SE	SE	6	1821	220 (1/19)	7 59	205	227	
9	13		January	18	UG	Equipment failure/Fuse blown/Corroded fuse holder found in trans closure/Replaced fuse/ Restored all load	Summit Court and Fort Lincoln Drive, NE	NE	5	1128	1810	6 42	128	15094	
10	14		January	20	OH	Motor Vehicle/Pole broken/Wires down/Replaced pole/Reattached wires/All load restored	Minnesota Avenue s/o Nash Place, SE	SE	7	1815	2350	5 36	240	479	
11	15		January	25	UG	Equipment failure/Cable failure/Found cable burned at duct edge/Replaced cable/All load restored	Neal Street s/w/o Montello Avenue, NE	NE	5	616	1316	7 0	100	14712	
12	16		January	29	OH	Equipment failure/Feeder tripped/Regulator failed /Isolated regulator/Made tie/Load restored	Allison Street and Iowa Avenue, NW	NW	4	505	735	2 30	1369	15197	
				# of Outages	16					Customers Affected				9342	
13	17		February	3	OH	Motor Vehicle/Pole broken/Fuses blown/Tie made/ Replaced fuses/Load restored/Referred to OH for permanent repairs	Naylor Road, SE n/o Denver Street, SE	SE	8	341	618	2 36	421	15173	
14	18		February	4	UG	Equipment failure/Cable fault/Replaced cable/All load restored	18th And Vamon Street, NW	NW	1	1903	354 (2/5)	8 51	11	14736	
14	19		February	4	OH	Equipment failure/Feeder tripped/Blown pothead/Replaced pot head/Load restored	Rodman Street w/o Tilden Street, NW	NW	3	1616	0100 (2/5)	8 44	273	144	
15	20		February	6	UG	Equipment failure/Transformer failed/Fuse blown/Replaced Transformer/Replaced fuse/All load restored	8th and G Streets, SE	SE	6	1257	1827	5 3	223	16002	
16	21		February	12	UG	Equipment failure/Cable failure/Switch opened /Isolated fault/Made tie/All load restored	Van Ness Street, and Wisconsin Avenue, NW	NW	3	1257	1454	1 57	494	309	
17	22		February	14	UG	Employee/Bus tripped/Employee inadvertently tripped a 13kV Bus/The Breaker was closed all load restored	12th and Irving Streets, NE	NE	5	942	953	0 12	3225	14008	14004
17	22		February	14	UG	See above	See above	NE	1	942	953	0 12	345	14008	14004
17	23		February	14	UG	Equipment failure/Feeder tripped/Stof box failed/Isolated stof box/Temporary repairs made/Load restored	14th Street, SE n/o K Street, SE	SE	6	2025	0347 (2/15)	7 22	445	212	
18	24		February	18	UG	Equipment failure/Transformer failed/Fuse Blown/ Replaced transformer/Replaced fuse/Load restored	Massachusetts Avenue e/o Warren Street, NW	NW	3	907	0044 (2/19)	15 37	3	14766	
19	25		February	19	UG	Equipment failure/Cable failure/Temporary repairs made/Load restored	4th and G Street, SE	SE	6	1032	2100	10 28	1	16003	
19	26		February	19	OH	Unknown/Blown fuse/Patrolled feeder no cause found/Replaced fuse/Load restored	Rhode Island Avenue and Franklin Street, NE	NE	5	818	951	1 33	142	14014	
20	27		February	20	OH	Equipment failure/Recloser tripped/Cable fault in riser/Isolated fault/Closed, all load restored	16th Street and Kalmia Road, NW	NW	4	1551	1659	1 8	1593	15199	
20	28	DC18-12	February	20	UG	Equipment failure/Cable failure/Replaced cable/Load restored	3200 block of N Street, NW	NW	2	2007	0500 (2/21)	8 53	3	14555	
21	29		February	21	OH	Motor vehicle/Three poles broken/Poles replaced/Load restored	South Dakota Avenue, and Bladensburg Road, NE	NE	5	750	2349	15 59	44	14016	
22	30		February	22	UG	Equipment failure/Module failed/Fuse blown/ Repaired module/Replaced fuse/Load restored	300 block of D Street, NE	NE	6	1252	1444	1 52	138	14787	
23	31		February	23	OH	Motor Vehicle/Pole struck/Wires down/Fuse blown/Isolated damage/Replaced fuse/Load restored	Mississippi Avenue, SE and Wayne Place, SE	SE	8	2234	2341	1 7	158	14755	
				# of Outages	15					Customers Affected				7519	
24	32		March	7	OH	Equipment failure/Wires down/Feeder tripped/ Permanent repairs made/Load restored	Danbury Street e/o Martin Luther King Jr. Avenue SW	SW	8	328	549	2 21	2,156	14758	
24	33		March	7	OH	Weather/Wire down/Replaced service wire/Load restored	Macomb Street w/o 36th Street, NW	NW	3	720	1606	8 46	1	101	
25	34		March	17	OH	Equipment failure/Wire down/ Recloser Tripped/ Cut in clear/Closed, load restored	200 block of V Street, SW	SW	6	1052	1230	1 33	1634	16001	
25	35		March	17	UG	Equipment failure/Fuse blown/Cable fault/ Isolated cable fault/Load restored	300 block of Bladensburg Road, NE	NE	5	1246	1537	2 51	183	15703	
26	36		March	24	OH	Motor vehicle/Pole broken/Transformer damaged/ Replaced pole/Replaced transformer	Ridge Road, SE n/o G Street, SE	SE	7	415	1257	8 42	9	451	
27	37		March	25	UG	Equipment failure/Cable failure/Duct damaged/ Isolated fault/Temporary repairs made	Florida Avenue, NW e/o 14th Street, NW	NW	1	1055	1930	8 35	1	15761	
28	38		March	27	UG	Equipment failure/Protector failed/Crew checked for safety/Feeder closed and held/All load restored	9th Street and D Street, NW	NW	2	403	440	0 37	119	14574	
29	39		March	30	UG	Equipment failure/Cable failure/Isolated fault/Made tie/Load restored	Ellicott Street, NW e/o Connecticut Avenue, NW	NW	3	757	939	1 42	907	14135	
30	40		March	31	UG	Equipment failure/Cable failure/Isolated fault/Made tie/Load restored	24th Place, NE w/o Bladensburg Road, NE	NE	5	904	1301	1 27	342	14019	
				# of Outages	9					Customers Affected				5352	
31	41		April	4	OH	Wind/Wires wrapped together/Feeder tripped /unwrapped wires/Load restored	4700 block AND 4800 block of 4th Street, NW	NW	4	1417	1539	1 22	1,641	15003	489
31	42		April	4	OH	Wind/Wires wrapped together/Feeder tripped /unwrapped wires/Load restored	4700 block AND 4800 block of 4th Street, NW	NW	4	1620	1655	0 35	1666	15003	
31	43		April	4	OH	Wind/Wires wrapped together/Feeder tripped /unwrapped wires/Installed space savers/Load restored	4700 block AND 4800 block of 4th Street, NW	NW	4	1744	1912	1 28	1503	15003	
32	44		April	5	OH	Employee/Pole down/Wires down/Fuse blown /Isolated downed wires/Replaced fuse/Load restored	1700 block of Hamilton Street, NE	NE	5	1149	1304	1 15	141	14014	
33	45		April	11	OH	Equipment failure/Feeder tripped/B phase cutout defective/Replaced cutout/Load restored	1300 block of Bladensburg Road, NE	NE	5	410	530	2 15	183	15703	
34	46		April	16	UG	Equipment failure/Fuse blown/Cable fault/Isolated fault/replaced fuse/Load restored	19th Street and M Street, NE	NE	5	1037	1452	4 15	211	15703	
34	47		April	16	OH	Foreign contact/Fuse blown/Cross arm brace contacted fuse/Replaced fuse/Load restored	13th Street and Hamilton Street, NE	NE	5	256	505	2 9	191	15198	
35	48		April	17	UG	Cable cut/Fuse blown/Isolated fault/Made tie/Load restored	9th Street and G Street, SE	SE	6	1200	1419	2 19	279	16002	
36	49		April	19	OH	Vegetation/Tree on wires/Poles broken /Transformer failed/Replaced poles/ Replaced transformer	29th Street s/o Military Road, NW	NW	4	1509	0830 (4/20)	17 21	12	133	
37	50		April	21	UG	Equipment failure/Cable failure/Blown fuse /Isolated fault/Made tie/Load restored	3000 block of Gentain Court, NE	NE	5	736	1125	3 49	103	14200	
38	51		April	24	UG	Equipment failure/Transformer failed/Blown fuse /Isolated Transformer/Replaced fuse/Load restored	300 block of Bryant Street, NW	NW	1	253	306	0 13	730	15769	
38	52		April	24	UG	Unknown/Fuse blown/Replaced fuse/All load restored	1800 block of Belmont Road, NW	NW	1	1455	2105	5 10	446	14732	
39	53		April	26	UG	Equipment failure/Transformer failed/Blown fuse /Replaced transformer/Replaced fuse/Load restored	3200 block of Hiatt Place, NW	NW	5	150	800	6 10	282	15991	
				# of Outages	13					Customers Affected				7388	

Attachment 1-4

2018 Non-Major Outage Reporting to the Public Service Commission of the District of Columbia

Report Sequence Number	Outage Sequence Number	Manhole Sequence Number*	Month	Day of Outage	OH or UG	Outage Cause/ Incident Description	Location	Quadrant	Ward	Time of Outage/ Incident	Actual Restoration Time	Duration of Outage Hours / min	Max No. of Cust. Affected	Feeder No.	Feeder No.			
5	6		January	9	UG	Cable cut/Fuse blown/Isolated fault/Made tie/ Restored load	13th Street n/o Q Street, NW	NW	1	1043	1854	8 11	85	15204W	15207W			
14	18		February	4	UG	Equipment failure/Cable fault/Replaced cable/All load restore	18th and Vernon Streets, NE	NW	1	1903	354 (2/5)	8 51	11	14736				
17			February	14	UG	Employee/Bus tripped/Employee inadvertently tripped a 13kV Bus/The Breaker was closed all load restored	12th and Irving Streets, NE	NE	1	942	953	0 12	345	14008	14004			
27	37		March	25	UG	Equipment failure/Cable failure/Duct damaged/ Isolated fault/Temporary repairs made	Florida Avenue, NW e/o 14th Street, NW	NW	1	1055	1930	8 35	1	15761				
38	51		April	24	UG	Equipment failure/Transformer failed/Blown fuse /Isolated Transformer/Replaced fuse/Load restored	300 block of Bryant Street, NW	NW	1	253	306	0 13	730	15769				
38	52		April	24	UG	Unknown/Fuse blown/Replaced fuse/All load restore	1800 block of Belmont Road, NW	NW	1	1455	2105	5 10	446	14732				
# of Outages													6			Customers Affected	1,618	
5	6		January	9	UG	Cable cut/Fuse blown/Isolated fault/Made tie/ Restored load	13th Street n/o Q Street, NW	NW	2	1043	1854	9 11	212	15204W	15207W			
28	DC18-12		February	20	UG	Equipment failure/Cable fault/Replaced cable/Load restore	3200 block of N Street, NW	NW	2	2007	0500 (2/21)	8 53	3	14555				
28	38		March	27	UG	Equipment failure/Protector failed/Crew checked for safety/Feeder closed and held/All load restore	9th Street and D Street, NW	NW	2	403	440	0 37	119	14574				
# of Outages													3			Customers Affected	334	
14	19		February	4	OH	Equipment failure/Feeder tripped/Blown pothead/Replaced pot head/Load restored	Rodman Street w/o Tilden Street, NW	NW	3	1616	0100 (2/5)	8 44	273	144				
16	21		February	12	UG	Equipment failure/Cable failure/Switch opened /Isolated fault/Made tie/All load restored	Van Ness Street, and Wisconsin Avenue, NW	NW	3	1257	1454	1 57	494	309				
18	24		February	18	UG	Equipment failure/Transformer failed/Fuse Blown/ Replaced transformer/Replaced fuse/Load restored	Massachusetts Avenue e/o Warren Street, NW	NW	3	907	0044 (2/19)	15 37	3	14766				
24	33		March	7	OH	Weather/Wind/Wire down/Replaced service wire/Load restored	Macomb Street w/o 36th Street, NW	NW	3	720	1606	8 46	1	101				
29	39		March	30	UG	Equipment failure/Cable failure/Isolated fault/Made tie/Load restored	Ellicott Street, NW e/o Connecticut Avenue, NW	NW	3	757	939	1 42	907	14135				
# of Outages													5			Customers Affected	1,678	
7	9		January	12	OH	Equipment failure/Wires down/Feeders tripped/Reinstalled wires/Load restored	Blair Road and Oglethorpe Street, NW	NW	4	437	10337	6 0	1525	15014	15013			
12	16		January	29	OH	Equipment failure/Feeder tripped/Regulator failed /Isolated regulator/Made tie/Load restored	Allison Street and Iowa Avenue, NW	NW	4	505	735	2 30	1369	15197				
20	27		February	20	OH	Equipment failure/Recloser tripped/Cable fault in riser/Isolated fault/Closed, all load restored	16th Street and Kalmia Road, NW	NW	4	1551	1659	1 8	1593	15199				
31	41		April	4	OH	Wind/Wires wrapped together/Feeder tripped /unwrapped wires/Load restored	4700 block AND 4800 block of 4th Street, NW	NW	4	1417	1539	1 22	1,641	15003	489			
31	42		April	4	OH	Wind/Wires wrapped together/Feeder tripped /unwrapped wires/Load restored	4700 block AND 4800 block of 4th Street, NW	NW	4	1620	1655	0 35	1666	15003				
31	43		April	4	OH	Wind/Wires wrapped together/Feeder tripped /unwrapped wires/Installed space savers/Load restored	4700 block AND 4800 block of 4th Street, NW	NW	4	1744	1912	1 28	1503	15003				
36	49		April	19	OH	Vegetation/Tree on wires/Poles broken /Transformer failed/Replaced poles/ Replaced transformer	29th Street s/o Military Road, NW	NW	4	1509	0830 (4/20)	17 21	12	133				
# of Outages													7			Customers Affected	9,309	
7	9		January	12	OH	Equipment failure/Wires down/Feeders tripped/Reinstalled wires/Load restored	Blair Road and Oglethorpe Street, NW	NW	5	437	1037	6 0	1,444	15014	15013			
7	10		January	12	OH	Equipment failure/Switch opened/Tap burned off regulator/Isolated fault/By-passed switch/Load restored	Harewood Street s/o Taylor Street, NE	NE	5	1142	15001	3 19	466	15013				
8	11		January	15	UG	Equipment failure/Cable failure/Permanent repairs made to cable/All load restored	Randolph Place s/o 1st Street, NW	NW	5	46	57	0 10	125	14004				
9	13		January	18	UG	Equipment failure/Fuse blown/Corroded fuse holder found in transformer/Replaced fuse/ Restored all load	Summit Court and Fort Lincoln Drive, NE	NE	5	1128	1810	6 42	128	15094				
11	15		January	25	UG	Equipment failure/Cable failure/Found cable burned at duct edge/Replaced cable/All load restored	Neal Street s/o Montello Avenue, NE	NE	5	616	1316	7 0	100	14712				
17	22		February	14	UG	Employee/Bus tripped/Employee inadvertently tripped a 13kV Bus/The Breaker was closed all load restored	12th and Irving Streets, NE	NE	5	942	953	0 12	3225					
19	26		February	19	OH	Unknown/Blown fuse/Patrolled feeder no cause found/Replaced fuse/Load restored	Rhode Island Avenue and Franklin Street, NE	NE	5	818	951	1 33	142	14014				
21	29		February	21	OH	Motor vehicle/Three poles broken/Poles replaced/Load restored	South Dakota Avenue, and Bladensburg Road, NE	NE	5	750	2349	15 59	44	14016				
25	35		March	17	UG	Equipment failure/Fuse blown/Cable fault/ Isolated cable fault/Load restored	300 block of Bladensburg Road, NE	NE	5	1246	1537	2 51	183	15703				
30	40		March	31	UG	Equipment failure/Cable failure/Isolated fault/Made tie/Load restored	24th Place, NE w/o Bladensburg Road, NE	NE	5	904	1301	1 27	342	14019				
32	44		April	5	OH	Employee/Pole down/Wires down/Fuse blown /Isolated downed wires/Replaced fuse/Load restored	1700 block of Hamilton Street, NE	NE	5	1149	1304	1 15	141	14014				
33	45		April	11	OH	Equipment failure/Feeder tripped/B phase cutout defective/Replaced cutout/Load restored	1300 block of Bladensburg Road, NE	NE	5	410	530	2 15	183	15703				
34	46		April	16	UG	Equipment failure/Fuse blown/Cable fault/Isolated fault/replaced fuse/Load restored	19th Street and M Street, NE	NE	5	1037	1452	4 15	211	15703				
34	47		April	16	OH	Foreign contact/Fuse blown/Cross arm brace contacted fuse/Replaced fuse/Load restored	13th Street and Hamilton Street, NE	NE	5	256	505	2 9	191	15198				
37	50		April	21	UG	Equipment failure/Cable failure/Blown fuse /Isolated fault/Made tie/Load restored	3000 block of Gentian Court, NE	NE	5	736	1125	3 49	103	14200				
39	53		April	26	UG	Equipment failure/Transformer failed/Blown fuse /Replaced transformer/Replaced fuse/Load restored	3200 block of Hiatt Place, NW	NW	5	150	800	6 10	282	15991				
# of Outages													16			Customers Affected	7,310	
2	3		January	5	UG	Equipment failure/Transformers failed/Temporary repairs made/Load restored	5th Street and M Street, NW	NW	6	651	234	19 43	202	15206				
5	6		January	9	UG	Cable cut/Fuse blown/Isolated fault/Made tie/ Restored load	13th Street n/o Q Street, NW	NW	6	1043	1854	8 11	128	15204W	15207W			
5	7		January	9	UG	Equipment failure/Cable fault/Feeder tripped/ Isolated fault/Made tie/Restored load	South Capitol Street, SE n/o R Street, SW	SW	6	1030	1254	2 24	1229	16000				
6	8		January	10	OH	Motor Vehicle/Pole broken/Feeder tripped/Isolated fault/Restored load	Half Street s/o Water Street, SW	SW	6	1142	1243	1 1	1650	16001				
9	12		January	18	UG	Equipment failure/Cable fault/Blown URD slip on/ made new slip on/Restored all load	15th Street and Pennsylvania Avenue, SE	SE	6	1821	220 (1/19)	7 59	205	227				
15	20		February	6	UG	Equipment failure/Transformer failed/Fuse blown /Replaced Transformer/Replaced fuse/All load restored	8th and G Streets, SE	SE	6	1257	1827	5 3	223	16002				
17	23		February	14	UG	Equipment failure/Feeder tripped/Stof box failed/Isolated stof box/Temporary repairs made/Load restored	14th Street, SE n/o K Street, SE	SE	6	2025	0347 (2/15)	7 22	445					
19	25		February	19	UG	Equipment failure/Cable failure/Temporary repairs made/Load restored	4th and G Street, SE	SE	6	1032	2100	10 28	1	16003				
22	30		February	22	UG	Equipment failure/Module failed/Fuse blown/ Repaired module/Replaced fuse/Load restored	300 block of D Street, NE	NE	6	1252	1444	1 52	138	14787				
25	34		March	17	OH	Equipment failure/Wire down/ Recloser Tripped/ Cut in clear/Closed, load restored	200 block of V Street, SW	SW	6	1052	1230	1 33	1634	16001				
35	48		April	17	UG	Cable cut/Fuse blown/Isolated fault/Made tie/Load restore	9th Street and G Street, SE	SE	6	1200	1419	2 19	279	16002				
# of Outages													11			Customers Affected	6,134	
1	2		January	4	OH	Equipment failure/Cable fault/Transformer failed/ Replaced cable and transformer/All load restored	Naylor Road n/o Gainesville Street, SE	SE	7	1425	0100 (1/5)	10 35	1	15173				
3	4		January	7	OH	Load/Blown fuse/Replaced fuse/Restored all loa	61st Street and Clay Street, NE	NE	7	346	524	1 38	128	366				
10	14		January	20	OH	Motor Vehicle/Pole broken/Wires down/Replaced pole/Reattached wires/All load restored	Minnesota Avenue s/o Nash Place, SE	SE	7	1815	2350	5 36	240	479				
26	36		March	24	OH	Motor vehicle/Pole broken/Transformer damaged/ Replaced pole/Replaced transformer	Ridge Road, SE n/o G Street, SE	SE	7	415	1257	8 42	9	451				
# of Outages													4			Customers Affected	378	
1	1		January	4	OH	Weather/Wind/Wires down/Replaced Wires/Restoring all load	Darrington Street e/o 6th Street, SE	SE	8	2046	0544 (1/5)	8 58	2	183				
4	5		January	8	OH	Animal/Squirrel/Fuse blown/Replaced fuse/All load restore	12th Street s/o Savannah Street, SE	SE	8	1051	1145	0 54	103	15175				

Priority feeders are in bold type.

2018 Non-Major Outage Reporting to the Public Service Commission of the District of Columbia

Report Sequence Number	Outage Sequence Number	Manhole Sequence Number*	Month	Day of Outage	OH or IUG	Outage Cause/ Incident Description	Location	Quadrant	Ward	Time of Outage/ Incident	Actual Restoration Time	Duration of Outage Hours / min	Max No. of Cust. Affected	Feeder No.	Feeder No.
13	17		February	3	OH	Motor Vehicle/Pole broken/Fuses blown/Tie made/ Replaced fuses/Load restored/Referred to OH for permanent repairs	Naylor Road, SE n/o Denver Street, SE	SE	8	341	618	2 36	421	15173	
23	31		February	23	OH	Motor Vehicle/Pole struck/Wires down/Fuse blown/isolated damage/Replaced fuse/Load restored	Mississippi Avenue, SE and Wayne Place, SE	SE	8	2234	2341	1 7	158	14755	
24	32		March	7	OH	Equipment failure/Wires down/Feeder tripped/ Permanent repairs made/Load restored	Danbury Street e/o Martin Luther King Jr. Avenue SW	SW	8	328	549	2 21	2,156	14758	
			# of Outages	5							Customers Affected		2,840		

Attachment 1-5

2018 Non-Major Outage Reporting to the Public Service Commission of the District of Columbia

Report Sequence Number	Outage Sequence Number	Manhole Sequence Number*	Month	Day of Outage	OH or UG	Outage Cause/ Incident Description	Location	Quadrant	Ward	Time of Outage/ Incident	Actual Restoration Time	Duration of Outage Hours / min	Max No. of Cust. Affected	Feeder No.	Feeder No.
3	4		January	7	OH	Load/Blow fuse/Replaced fuse/Restored all load	61st Street and Clay Street, NE	NE	7	346	524	1	38	128	366
7	10		January	12	OH	Equipment failure/Switch opened/ Tap burned off regulator/isolated fault/By-passed switch/Load restored	Harewood Street s/o Taylor Street, NE	NE	5	1142	15001	3	19	466	15013
9	13		January	18	UG	Equipment failure/Fuse blown/Corroded fuse holder found in trans closure/Replaced fuse/ Restored all load	Summit Court and Fort Lincoln Drive, NE	NE	5	1128	1810	6	42	128	15094
11	15		January	25	UG	Equipment failure/Cable failure/Found cable burned at duct edge/Replaced cable/All load restored	Neal Street sw/o Montello Avenue, NE	NE	5	616	1316	7	0	100	14712
17	22		February	14	UG	Employee/Bus tripped/Employee inadvertently tripped a 13kV Bus/The Breaker was closed all load restored	12th and Irving Streets, NE	NE	5	942	953	0	12	3225	
17			February	14	UG	See above	See above	NE	1	942	953	0	12	345	
19	26		February	19	OH	Unknown/Blow fuse/Patrolled feeder no cause found/Replaced fuse/Load restored	Rhode Island Avenue and Franklin Street, NE	NE	5	818	951	1	33	142	14014
21	29		February	21	OH	Motor vehicle/Three poles broken/Poles replaced/Load restored	South Dakota Avenue, and Bladensburg Road, NE	NE	5	750	2349	15	59	44	14016
22	30		February	22	UG	Equipment failure/Module failed/Fuse blown/ Repaired module/Replaced fuse/Load restored	300 block of D Street, NE	NE	6	1252	1444	1	52	138	14787
25	35		March	17	UG	Equipment failure/Fuse blown/Cable fault/ Isolated cable fault/Load restored	R300 block of Bladensburg Road, NE	NE	5	1246	1537	2	51	183	15703
30	40		March	31	UG	Equipment failure/Cable failure/isolated fault/Made tie/Load restored	24th Place, NE w/o Bladensburg Road, NE	NE	5	904	1301	1	27	342	14019
32	44		April	5	OH	Employee/Pole down/Wires down/Fuse blown/isolated downed wires/Replaced fuse/Load restored	1700 block of Hamilton Street, NE	NE	5	1149	1304	1	15	141	14014
33	45		April	11	OH	Equipment failure/Feeder tripped/B phase cutout defective/Replaced cutout/Load restored	1300 block of Bladensburg Road, NE	NE	5	410	530	2	15	183	15703
34	46		April	16	UG	Equipment failure/Fuse blown/Cable fault/isolated fault/replaced fuse/Load restored	19th Street and M Street, NE	NE	5	1037	1452	4	15	211	15703
34	47		April	16	OH	Foreign contact/Fuse blown/Cross arm brace contacted fuse/Replaced fuse/Load restored	13th Street and Hamilton Street, NE	NE	5	256	505	2	9	191	15198
37	50		April	21	UG	Equipment failure/Cable failure/Blow fuse /isolated fault/Made tie/Load restored	3000 block of Gentain Court, NE	NE	5	736	1125	3	49	103	14200
				# of Outages	15					Customers Affected			6070		
2	3		January	5	UG	Equipment failure/Transformers failed/Temporary repairs made/Load restored	5th Street and M Street, NW	NW	6	651	234	19	43	202	15206
5	6		January	9	UG	Cable cut/Fuse blown/isolated fault/Made tie/ Restored loc	13th Street n/o Q Street, NW	NW	1	1043	1854	8	11	85	15204W
5			January	9	UG	See Above	13th Street n/o Q Street, NW	NW	2	1043	1854	9	11	212	15204W
5			January	9	UG	See Above	13th Street n/o Q Street, NW	NW	6	1043	1854	8	11	128	15204W
7	9		January	12	OH	Equipment failure/Wires down/Feeders tripped/Reinstalled wires/Load restored	Blair Road and Oglethorpe Street, NW	NW	4	437	10337	6	0	1525	15014
7			January	12	OH	See above	See above	NW	5	437	1037	6	0	1,444	15014
8	11		January	15	UG	Equipment failure/Cable failure/Permanent repairs made to cable/All load restored	Randolph Place s/o 1st Street, NW	NW	5	46	57	0	10	125	14004
12	16		January	29	OH	Equipment failure/Feeder tripped/Regulator failed /isolated regulator/Made tie/Load restored	Allison Street and Iowa Avenue, NW	NW	4	505	735	2	30	1369	15197
14	18		February	4	UG	Equipment failure/Cable fault/Replaced cable/All load restored	18th And Vernon Street, NW	NW	1	1903	354 (2/5)	8	51	11	14736
14	19		February	4	OH	Equipment failure/Feeder tripped/Blow pothead/Replaced pot head/Load restored	Rodman Street w/o Tilden Street, NW	NW	3	1616	0100 (2/5)	8	44	273	144
16	21		February	12	UG	Equipment failure/Cable failure/Switch opened /isolated fault/Made tie/All load restored	Van Ness Street, and Wisconsin Avenue, NW	NW	3	1257	1454	1	57	494	309
18	24		February	18	UG	Equipment failure/Transformer failed/Fuse Blown/ Replaced transformer/Replaced fuse/Load restored	Massachusetts Avenue e/o Warren Street, NW	NW	3	907	0044 (2/19)	15	37	3	14766
20	27		February	20	OH	Equipment failure/Recloser tripped/Cable fault in riser/isolated fault/Closed, all load restored	16th Street and Kalmia Road, NW	NW	4	1551	1659	1	8	1593	15199
24	28	DC18-12	February	20	UG	Equipment failure/Cable failure/Replaced cable/Load restore	3200 block of N Street, NW	NW	2	2007	0500 (2/21)	8	53	3	14555
27	37		March	25	UG	Weather/Wind/Wire down/Replaced service wire/Load restore	Macomb Street w/o 36th Street, NW	NW	3	720	1606	8	46	1	101
27			March	25	UG	Equipment failure/Cable failure/Duct damaged/ Isolated fault/Temporary repairs made	Florida Avenue, NW e/o 14th Street, NW	NW	1	1055	1930	8	35	1	15761
28	38		March	27	UG	Equipment failure/Protector failed/Crew checked for safety/Feeder closed and held/All load restored	9th Street and D Street, NW	NW	2	403	440	0	37	119	14574
29	39		March	30	UG	Equipment failure/Cable failure/isolated fault/Made tie/Load restored	Ellicott Street, NW e/o Connecticut Avenue, NW	NW	3	757	939	1	42	907	14135
31	41		April	4	OH	Wind/Wires wrapped together/Feeder tripped /unwrapped wires/Load restored	4700 block AND 4800 block of 4th Street, NW	NW	4	1417	1539	1	22	1,641	15003
31	42		April	4	OH	Wind/Wires wrapped together/Feeder tripped /unwrapped wires/Load restored	4700 block AND 4800 block of 4th Street, NW	NW	4	1620	1655	0	35	1666	15003
31	43		April	4	OH	Wind/Wires wrapped together/Feeder tripped /unwrapped wires/Installed space savers/Load restored	4700 block AND 4800 block of 4th Street, NW	NW	4	1744	1912	1	28	1503	15003
36	49		April	19	OH	Vegetation/Tree on wires/Poles broken /Transformer failed/Replaced poles/ Replaced transformer	29th Street s/o Military Road, NW	NW	4	1509	0830 (4/20)	17	21	12	133
38	51		April	24	UG	Equipment failure/Transformer failed/Blow fuse /isolated Transformer/Replaced fuse/All load restored	300 block of Bryant Street, NW	NW	1	253	306	0	13	730	15768
38	52		April	24	UG	Unknown/Fuse blown/Replaced fuse/All load restore	1800 block of Belmont Road, NW	NW	1	1455	2105	5	10	446	14732
39	53		April	26	UG	Equipment failure/Transformer failed/Blow fuse /Replaced transformer/Replaced fuse/Load restored	3200 block of Hiatt Place, NW	NW	5	150	800	6	10	282	15991
				# of Outages	22					Customers Affected			14775		
1	1		January	4	OH	Weather/Wind/Wires down/Replaced Wires/Restoring all loc	Darrington Street e/o 6th Street, SE	SE	8	2046	0544 (1/5)	8	58	2	183
1	2		January	4	OH	Equipment failure/Cable fault/Transformer failed/ Replaced cable and transformer/All load restored	Naylor Road n/o Gainesville Street, SE	SE	7	1425	0100 (1/5)	10	35	1	15173
4	5		January	8	OH	Animal/Squirrel/Fuse blown/Replaced fuse/All load restore	12th Street s/o Savannah Street, SE	SE	8	1051	1145	0	54	103	15175
9	12		January	18	UG	Equipment failure/Cable fault/Blow URD slip on/ made new slip on/Restored all load	15th Street and Pennsylvania Avenue, SE	SE	6	1821	220 (1/19)	7	59	205	227
10	14		January	20	OH	Motor Vehicle/Pole broken/Wires down/Replaced pole/Reattached wires/All load restored	Minnesota Avenue se/o Nash Place, SE	SE	7	1815	2350	5	36	240	479
13	17		February	3	OH	Motor Vehicle/Pole broken/Fuses blown/Tie made/ Replaced fuses/Load restored/Referred to OH for permanent repairs	Naylor Road, SE n/o Denver Street, SE	SE	8	341	618	2	36	421	15173
15	20		February	6	UG	Equipment failure/Transformer failed/Fuse blown /Replaced Transformer/Replaced fuse/All load restored	8th and G Streets, SE	SE	6	1257	1827	5	3	223	16002
17	23		February	14	UG	Equipment failure/Feeder tripped/Stof box failed/isolated stof box/Temporary repairs made/Load restored	14th Street, SE n/o K Street, SE	SE	6	2025	0347 (2/15)	7	22	445	
19	25		February	19	UG	Equipment failure/Cable failure/Temporary repairs made/Load restored	4th and G Street, SE	SE	6	1032	2100	10	28	1	16003
23	31		February	23	OH	Motor Vehicle/Pole struck/Wires down/Fuse blown/isolated damage/Replaced fuse/Load restored	Mississippi Avenue, SE and Wayne Place, SE	SE	8	2234	2341	1	7	158	14755
26	36		March	24	OH	Motor vehicle/Pole broken/Transformer damaged/ Replaced pole/Replaced transformer	Ridge Road, SE n/o G Street, SE	SE	7	415	1257	8	42	9	451
35	48		April	17	UG	Cable cut/Fuse blown/isolated fault/Made tie/Load restore	9th Street and G Street, SE	SE	6	1200	1419	2	19	279	16002
				# of Outages	12					Customers Affected			2087		
5	7		January	9	UG	Equipment failure/Cable fault/Feeder tripped/ Isolated fault/Made tie/Restored load	South Capitol Street, SE n/o R Street, SW	SW	6	1030	1254	2	24	1229	16000
6	8		January	10	OH	Motor Vehicle/Pole broken/Feeder tripped/isolated fault/Restored load	Half Street s/o Water Street, SW	SW	6	1142	1243	1	1	1650	16001
24	32		March	7	OH	Equipment failure/Wires down/Feeder tripped/ Permanent repairs made/Load restored	Danbury Street e/o Martin Luther King Jr. Avenue SW	SW	8	328	549	2	21	2,156	14758
25	34		March	17	OH	Equipment failure/Wire down/ Recloser Tripped/ Cut in clear/Closed, load restored	200 block of V Street, SW	SW	6	1052	1230	1	33	1634	16001
				# of Outages	4					Customers Affected			6669		

Priority feeders are in bold type.

Attachment 1-6

October 1, 2016 - September 30, 2017			
FEEDER	SAIF	SAID	CAIDI
29	1.404	198	141
38	1.000	108	108
52	0.009	1	123
53	1.383	545	394
59	0.150	50	333
60	0.094	1	12
63	0.040	1	20
64	1.169	496	425
65	0.006	2	362
66	0.009	1	136
74	0.005	0	16
75	1.179	290	246
76	0.550	68	123
82	0.003	0	7
84	2.120	674	318
86	0.730	35	47
87	1.022	86	84
91	0.333	369	1,107
96	0.906	229	253
97	0.035	9	249
99	0.002	0	165
101	0.093	15	166
102	0.133	25	185
117	1.014	133	131
118	2.471	437	177
119	0.005	1	104
128	0.008	1	140
132	0.012	1	78
133	0.029	19	640
141	0.009	2	210
144	4.230	315	75
164	0.197	32	163
165	1.157	556	481
167	0.053	2	44
177	0.015	3	204
178	0.994	84	84
181	0.150	14	94
183	0.420	36	85
199	0.012	0	19
205	0.012	0	19
208	1.018	122	120
209	1.027	534	520
210	0.162	3	19
211	0.005	1	196
212	0.012	0	6
223	1.097	7	6
227	0.004	1	305
228	0.049	15	299
229	0.150	21	141
230	0.846	297	352
233	1.622	416	257
244	0.094	4	46
292	1.008	340	338
294	0.013	4	330

October 1, 2016 - September 30, 2017				
FEEDER	SAIF	SAID	CAIDI	SPC
14717	5.013	231	46	0.06091
14014	5.534	406	73	0.05979
15021	3.732	284	76	0.04171
15173	11.649	1,584	136	0.03955
15705	2.777	242	87	0.03221
15094	3.034	193	64	0.03094
15013	2.903	165	57	0.03010
15709	2.508	70	28	0.02969
15174	2.262	224	99	0.02884
15014	2.838	130	46	0.02297
14758	1.996	106	53	0.02150
15701	1.297	55	42	0.02001
15170	2.215	169	76	0.01934
14200	2.208	191	86	0.01733
14731	0.987	163	165	0.01728
15198	2.100	101	48	0.01727
15130	1.221	220	180	0.01586
15177	1.389	175	126	0.01563
14787	1.372	322	234	0.01503
14767	2.582	220	85	0.01405
15945	2.048	165	80	0.01344
14031	2.194	126	57	0.01332
15703	0.782	60	76	0.01327
15199	1.056	142	134	0.01252
14135	1.756	338	192	0.01237
15755	2.953	92	31	0.01198
14722	1.171	170	145	0.01192
84	2.120	674	318	0.01161
14755	1.224	107	87	0.01097
368	2.919	262	90	0.01031
14733	1.068	195	183	0.01029
15085	1.211	80	66	0.01005
15011	1.168	120	103	0.00888
15009	1.132	101	89	0.00875
14008	1.596	121	76	0.00873
118	2.471	437	177	0.00825
15197	0.984	88	89	0.00824
15012	0.369	55	149	0.00762
14900	0.888	92	103	0.00680
14057	1.178	156	133	0.00652
15758	0.520	121	233	0.00647
14017	1.012	55	55	0.00638
144	4.230	315	75	0.00614
15944	1.436	396	276	0.00608
15801	1.028	118	115	0.00604
15756	0.863	257	298	0.00591
15763	0.321	107	334	0.00553
209	1.027	534	520	0.00531
165	1.157	556	481	0.00509
14766	1.081	166	153	0.00497
53	1.383	545	394	0.00485
14145	1.171	149	127	0.00474
386	1.002	395	394	0.00458
490	1.484	85	57	0.00433

The remaining 521 District feeders did not incur a sustained outage during the time period.

2018 Feeder Data Based on TME
September 30, 2017 Feeder Performance

Service Outage SO2018-05-E
Formerly Formal Case Nos. 982 and 1002
Commission Order No. 15131
Attachment 1-6

Indices
Page 19 of 40

October 1, 2016 - September 30, 2017			
FEEDER	SAIF	SAID	CAIDI
308	0.005	1	170
309	0.166	15	88
323	0.328	22	66
324	0.012	1	98
327	0.003	0	100
328	0.035	1	36
329	1.033	134	130
333	0.131	7	54
345	0.026	4	145
347	0.995	115	115
349	0.002	0	135
366	1.017	113	111
367	0.002	0	110
368	2.919	262	90
369	1.111	77	69
370	1.473	410	279
372	0.007	1	167
380	0.021	3	155
383	0.283	22	76
385	0.015	1	59
386	1.002	395	394
387	0.002	0	110
388	0.066	2	38
394	0.037	8	226
414	0.027	2	79
416	0.171	49	285
451	2.391	200	84
467	0.021	3	135
476	0.046	19	422
479	0.082	4	50
482	0.380	49	130
488	0.893	31	35
489	0.259	20	77
490	1.484	85	57
491	0.064	29	449
495	1.008	119	118
496	1.096	80	73
499	0.025	5	205
14001	0.098	6	61
14002	0.828	146	176
14004	0.180	25	139
14005	0.027	3	113
14006	0.001	0	170
14007	0.102	9	90
14008	1.596	121	76
14009	0.024	3	131
14010	0.049	9	192
14014	5.534	406	73
14015	0.048	12	240
14016	0.332	67	202
14017	1.012	55	55
14020	1.000	72	72
14022	0.301	55	182
14023	0.106	14	135

October 1, 2016 - September 30, 2017				
FEEDER	SAIF	SAID	CAIDI	SPC
15204W	0.505	142	280	0.00424
15867	1.292	55	42	0.00407
14702	0.494	137	277	0.00405
208	1.018	122	120	0.00399
14054	0.322	70	216	0.00352
495	1.008	119	118	0.00351
347	0.995	115	115	0.00345
15175	0.895	37	41	0.00336
496	1.096	80	73	0.00333
15707	0.216	14	66	0.00330
14987	0.265	27	102	0.00320
64	1.169	496	425	0.00316
15710	0.294	13	44	0.00314
369	1.111	77	69	0.00313
15007	1.244	404	325	0.00305
14788	0.415	77	185	0.00299
75	1.179	290	246	0.00299
15874	0.169	79	469	0.00298
15172	0.343	32	94	0.00288
488	0.893	31	35	0.00285
366	1.017	113	111	0.00282
451	2.391	200	84	0.00269
14035	0.264	90	342	0.00258
15016	0.225	37	164	0.00248
14560	0.997	276	277	0.00240
14004	0.180	25	139	0.00238
15166	0.181	18	100	0.00232
14150	0.360	74	204	0.00221
223	1.097	7	6	0.00216
14136	0.429	26	61	0.00215
14002	0.828	146	176	0.00209
14093	0.452	25	56	0.00207
14732	0.101	23	223	0.00203
14132	0.288	42	144	0.00202
14022	0.301	55	182	0.00202
87	1.022	86	84	0.00201
329	1.033	134	130	0.00192
15204R	0.103	31	301	0.00187
15762	0.078	24	302	0.00184
14133	0.972	118	121	0.00183
15015	0.105	22	209	0.00178
76	0.550	68	123	0.00177
117	1.014	133	131	0.00175
15010	0.155	18	117	0.00166
15997	0.157	44	280	0.00164
15986	0.333	69	207	0.00158
14016	0.332	67	202	0.00144
15757	0.116	37	321	0.00142
14729	0.107	14	131	0.00139
15006	0.098	10	102	0.00138
86	0.730	35	47	0.00133
14541	0.458	120	262	0.00132
183	0.420	36	85	0.00131
15206	0.116	22	186	0.00121

The remaining 521 District feeders did not incur a sustained outage during the time period.

October 1, 2016 - September 30, 2017			
FEEDER	SAIF	SAID	CAIDI
14031	2.194	126	57
14035	0.264	90	342
14054	0.322	70	216
14055	0.992	7	7
14057	1.178	156	133
14058	1.342	219	163
14093	0.452	25	56
14132	0.288	42	144
14133	0.972	118	121
14135	1.756	338	192
14136	0.429	26	61
14145	1.171	149	127
14146	0.147	34	232
14150	0.360	74	204
14151	0.001	0	290
14200	2.208	191	86
14261	0.145	16	108
14305	0.003	0	27
14325	0.021	5	239
14360	0.001	0	270
14370	0.031	13	411
14372	0.002	0	165
14401	0.001	0	450
14418	0.083	24	288
14426	0.010	2	167
14518	0.059	12	196
14524	0.001	0	50
14528	0.002	0	200
14531	0.002	1	355
14535	0.002	0	80
14537	0.033	6	174
14538	0.003	0	150
14541	0.458	120	262
14544	0.697	433	622
14555	0.003	0	67
14556	0.026	1	42
14559	0.018	3	148
14560	0.997	276	277
14561	1.000	277	277
14562	1.000	277	277
14563	1.000	277	277
14564	1.062	294	277
14565	1.000	277	277
14570	0.018	0	21
14619	0.200	176	882
14700	0.006	0	75
14701	0.131	9	72
14702	0.494	137	277
14709	0.286	2	7
14712	0.074	9	123
14713	0.057	7	115
14715	0.053	4	78
14717	5.013	231	46
14718	8.000	798	100

October 1, 2016 - September 30, 2017				
FEEDER	SAIF	SAID	CAIDI	SPC
14701	0.131	9	72	0.00111
292	1.008	340	338	0.00110
14544	0.697	433	622	0.00110
370	1.473	410	279	0.00109
14261	0.145	16	108	0.00109
14713	0.057	7	115	0.00106
14712	0.074	9	123	0.00101
323	0.328	22	66	0.00092
14765	0.196	19	97	0.00091
178	0.994	84	84	0.00090
29	1.404	198	141	0.00082
15761	0.074	23	308	0.00080
15943	0.046	13	283	0.00075
15991	0.240	56	231	0.00075
229	0.15	21	141	0.00070
14007	0.102	9	90	0.00068
14736	0.044	13	295	0.00067
00499a	0.395	80	203	0.00065
14146	0.147	34	232	0.00064
15171	0.078	6	79	0.00061
14023	0.106	14	135	0.00058
15702	0.031	5	176	0.00057
233	1.622	416	257	0.00057
383	0.283	22	76	0.00056
14055	0.992	7	7	0.00052
14015	0.048	12	240	0.00051
14563	1.000	277	277	0.00049
14786	0.053	10	192	0.00048
14752	0.072	3	43	0.00048
15461	0.061	3	43	0.00047
309	0.166	15	88	0.00045
15706	0.052	7	133	0.00044
15708	0.038	2	46	0.00042
15003	0.093	10	108	0.00041
230	0.846	297	352	0.00040
15950	0.250	31	125	0.00038
482	0.380	49	130	0.00038
14753	0.087	5	62	0.00037
205	0.012	0	19	0.00037
333	0.131	7	54	0.00037
14001	0.098	6	61	0.00036
15947	1.048	93	89	0.00036
15001	0.041	7	177	0.00036
15949	0.306	42	138	0.00035
489	0.259	20	77	0.00035
164	0.197	32	163	0.00035
14058	1.342	219	163	0.00033
102	0.133	25	185	0.00031
479	0.082	4	50	0.00031
15769	0.027	7	265	0.00029
210	0.162	3	19	0.00024
14009	0.024	3	131	0.00024
15996	0.046	4	78	0.00023
96	0.906	229	253	0.00023

The remaining 521 District feeders did not incur a sustained outage during the time period.

October 1, 2016 - September 30, 2017			
FEEDER	SAIF	SAID	CAIDI
14722	1.171	170	145
14726	0.002	0	70
14729	0.107	14	131
14731	0.987	163	165
14732	0.101	23	223
14733	1.068	195	183
14736	0.044	13	295
14752	0.072	3	43
14753	0.087	5	62
14755	1.224	107	87
14758	1.996	106	53
14765	0.196	19	97
14766	1.081	166	153
14767	2.582	220	85
14786	0.053	10	192
14787	1.372	322	234
14788	0.415	77	185
14890	0.007	1	104
14892	0.003	0	93
14900	0.888	92	103
14987	0.265	27	102
15001	0.041	7	177
15003	0.093	10	108
15004	0.005	1	162
15006	0.098	10	102
15007	1.244	404	325
15008	1.000	265	265
15009	1.132	101	89
15010	0.155	18	117
15011	1.168	120	103
15012	0.369	55	149
15013	2.903	165	57
15014	2.838	130	46
15015	0.105	22	209
15016	0.225	37	164
15021	3.732	284	76
15085	1.211	80	66
15094	3.034	193	64
15130	1.221	220	180
15166	0.181	18	100
15170	2.215	169	76
15171	0.078	6	79
15172	0.343	32	94
15173	11.649	1,584	136
15174	2.262	224	99
15175	0.895	37	41
15176	0.002	0	60
15177	1.389	175	126
15197	0.984	88	89
15198	2.100	101	48
15199	1.056	142	134
15206	0.116	22	186
15295	0.039	7	173
15319	0.043	10	237

October 1, 2016 - September 30, 2017				
FEEDER	SAIF	SAID	CAIDI	SPC
181	0.150	14	94	0.00021
97	0.035	9	249	0.00020
15764	0.015	3	181	0.00020
416	0.171	49	285	0.00020
388	0.066	2	38	0.00020
14020	1.000	72	72	0.00018
14562	1.000	277	277	0.00018
133	0.029	19	640	0.00017
14565	1.000	277	277	0.00017
59	0.150	50	333	0.00017
244	0.094	4	46	0.00017
476	0.046	19	422	0.00016
491	0.064	29	449	0.00016
14564	1.062	294	277	0.00014
228	0.049	15	299	0.00013
101	0.093	15	166	0.00013
167	0.053	2	44	0.00013
91	0.333	369	1,107	0.00012
394	0.037	8	226	0.00008
414	0.027	2	79	0.00007
328	0.035	1	36	0.00007
385	0.015	1	59	0.00006
14005	0.027	3	113	0.00006
15711	0.909	100	110	0.00006
345	0.026	4	145	0.00006
467	0.021	3	135	0.00006
60	0.094	1	12	0.00005
38	1	108	108	0.00005
14561	1.000	277	277	0.00005
14718	8.000	798	100	0.00005
499	0.025	5	205	0.00004
14700	0.006	0	75	0.00004
15207R	0.004	1	160	0.00004
177	0.015	3	204	0.00004
14890	0.007	1	104	0.00003
14556	0.026	1	42	0.00003
372	0.007	1	167	0.00003
380	0.021	3	155	0.00003
15770	0.005	1	256	0.00003
65	0.006	2	362	0.00003
14372	0.002	0	165	0.00003
14360	0.001	0	270	0.00003
14535	0.002	0	80	0.00003
15875	0.002	0	180	0.00003
128	0.008	1	140	0.00002
63	0.040	1	20	0.00002
212	0.012	0	6	0.00002
211	0.005	1	196	0.00002
14555	0.003	0	67	0.00002
15295	0.039	7	173	0.00002
308	0.005	1	170	0.00002
227	0.004	1	305	0.00002
14709	0.286	2	7	0.00002
324	0.012	1	98	0.00002

The remaining 521 District feeders did not incur a sustained outage during the time period.

October 1, 2016 - September 30, 2017			
FEEDER	SAIF	SAID	CAIDI
15334	0.001	1	910
15339	0.001	0	90
15340	0.001	0	70
15341	0.001	0	160
15342	0.001	0	70
15343	0.001	0	130
15370	0.048	5	104
15461	0.061	3	43
15462	0.007	0	53
15463	0.001	0	140
15469	0.001	0	30
15638	1.000	187	187
15701	1.297	55	42
15702	0.031	5	176
15703	0.782	60	76
15705	2.777	242	87
15706	0.052	7	133
15707	0.216	14	66
15708	0.038	2	46
15709	2.508	70	28
15710	0.294	13	44
15711	0.909	100	110
15755	2.953	92	31
15756	0.863	257	298
15757	0.116	37	321
15758	0.520	121	233
15761	0.074	23	308
15762	0.078	24	302
15763	0.321	107	334
15764	0.015	3	181
15769	0.027	7	265
15770	0.005	1	256
15801	1.028	118	115
15867	1.292	55	42
15874	0.169	79	469
15875	0.002	0	180
15943	0.046	13	283
15944	1.436	396	276
15945	2.048	165	80
15947	1.048	93	89
15949	0.306	42	138
15950	0.250	31	125
15986	0.333	69	207
15991	0.240	56	231
15996	0.046	4	78
15997	0.157	44	280
00499a	0.395	80	203
15204R	0.103	31	301
15204W	0.505	142	280
15207R	0.004	1	160
15758	1.229	182	148
15761	0.008	2	262
15762	2.000	79	40
15763	1.002	50	50

October 1, 2016 - September 30, 2017				
FEEDER	SAIF	SAID	CAIDI	SPC
14619	0.200	176	882	0.00002
132	0.012	1	78	0.00002
15334	0.001	1	910	0.00002
15462	0.007	0	53	0.00002
14010	0.049	9	192	0.00001
14426	0.010	2	167	0.00001
66	0.009	1	136	0.00001
14006	0.001	0	170	0.00001
119	0.005	1	104	0.00001
387	0.002	0	110	0.00001
15339	0.001	0	90	0.00001
14401	0.001	0	450	0.00001
14151	0.001	0	290	0.00001
15176	0.002	0	60	0.00001
14370	0.031	13	411	0.00001
294	0.013	4	330	0.00001
14531	0.002	1	355	0.00001
14418	0.083	24	288	0.00001
15008	1.000	265	265	0.00001
14325	0.021	5	239	0.00001
15319	0.043	10	237	0.00001
141	0.009	2	210	0.00001
14518	0.059	12	196	0.00001
15638	1.000	187	187	0.00001
15341	0.001	0	160	0.00001
14537	0.033	6	174	0.00001
14528	0.002	0	200	0.00001
14538	0.003	0	150	0.00001
349	0.002	0	135	0.00001
15004	0.005	1	162	0.00001
14559	0.018	3	148	0.00001
99	0.002	0	165	0.00001
52	0.009	1	123	0.00001
367	0.002	0	110	0.00001
15370	0.048	5	104	0.00001
15343	0.001	0	130	0.00001
14524	0.001	0	50	0.00001
15463	0.001	0	140	0.00001
327	0.003	0	100	0.00001
14892	0.003	0	93	0.00001
14726	0.002	0	70	0.00001
14715	0.053	4	78	0.00001
15342	0.001	0	70	0.00001
15340	0.001	0	70	0.00001
15469	0.001	0	30	0.00000
14305	0.003	0	27	0.00000
14570	0.018	0	21	0.00000
199	0.012	0	19	0.00000
74	0.005	0	16	0.00000
82	0.003	0	7	0.00000
14538	0.003	0	111	0.00518
14528	0.002	0	33	0.00517
209	0.002	0	56	0.00517
14723	0.002	0	295	0.00517

The remaining 521 District feeders did not incur a sustained outage during the time period.

October 1, 2016 - September 30, 2017			
FEEDER	SAIF	SAID	CAIDI
15764	0.002	1	263
15769	1.892	110	58
15770	0.083	18	219
15801	1.501	195	130
15867	2.071	162	78
15874	0.007	1	141
15875	1.086	195	180
15943	0.907	44	48
15944	1.296	502	388
15945	0.075	20	264
15947	3.081	316	103
15949	0.305	62	203
15950	0.016	8	486
15986	1.727	523	303
15996	0.003	1	471
15997	0.003	0	145
38414	0.000	0	304
70369	0.000	0	31
71167	0.000	0	33
92082	0.000	0	7
93075	0.000	0	31
93394	0.000	0	0
100118	0.000	0	18
111451	0.000	0	9
152292	0.000	0	59
15204R	0.007	1	192
15204W	0.001	0	330
15207R	0.520	179	345
15207W	0.591	97	165

October 1, 2016 - September 30, 2017				
FEEDER	SAIF	SAID	CAIDI	SPC
14408	0.002	0	88	0.00517
15338	0.002	0	120	0.00517
14542	0.002	0	103	0.00517
212	0.002	0	74	0.00517
14571	0.002	0	240	0.00517
333	0.002	0	196	0.00517
14531	0.002	0	124	0.00517
223	0.002	0	127	0.00517
99	0.002	0	107	0.00517
15452	0.001	0	115	0.00517
14555	0.001	0	183	0.00517
14375	0.001	0	83	0.00517
15401	0.001	0	89	0.00517
15204W	0.001	0	330	0.00517
15455	0.001	0	124	0.00516
15336	0.001	0	185	0.00516
31	0	0	101	0.00000
343	0	0	111	0.00000
14022	0	0	78	0.00000
14812	0	0	226	0.00000
38414	0	0	304	0.00000
70369	0	0	31	0.00000
71167	0	0	33	0.00000
92082	0	0	7	0.00000
93075	0	0	31	0.00000
93394	0	0	0	0.00000
100118	0	0	18	0.00000
111451	0	0	9	0.00000
152292	0	0	59	0.00000

The remaining 521 District feeders did not incur a sustained outage during the time period.

Attachment 1-7

Attachment 1-8

2018 Non-Major Outage Reporting to the Public Service Commission of the District of Columbia

Manhole Event Data Pursuant to Order No. 15155 (Outages associated with Manhole Events)

Count	Month	Day of Outage	Manhole Event No.	Out or IUG	Outage Cause/ Incident Description	Location	Week	Time of Outage/ Incident	Actual Restoration Time	Duration of Outage Hours / min	Max No. of Cust. Affected	Date of Last Inspection	Conditions Found During Inspection	Repair Schedule	Repairs Made (Yes/No)	Date of Repairs
28	February	20	DC18-12	UG	Equipment failure/Cable failure/Replaced cable/Load restored	3200 block of N Street, NW	2	2007	0500 (2/21)	8 53	3	Not found	N/A	N/A	N/A	N/A
					# of Outages	1			Total Number of customers affected		3					

Attachment 1-9

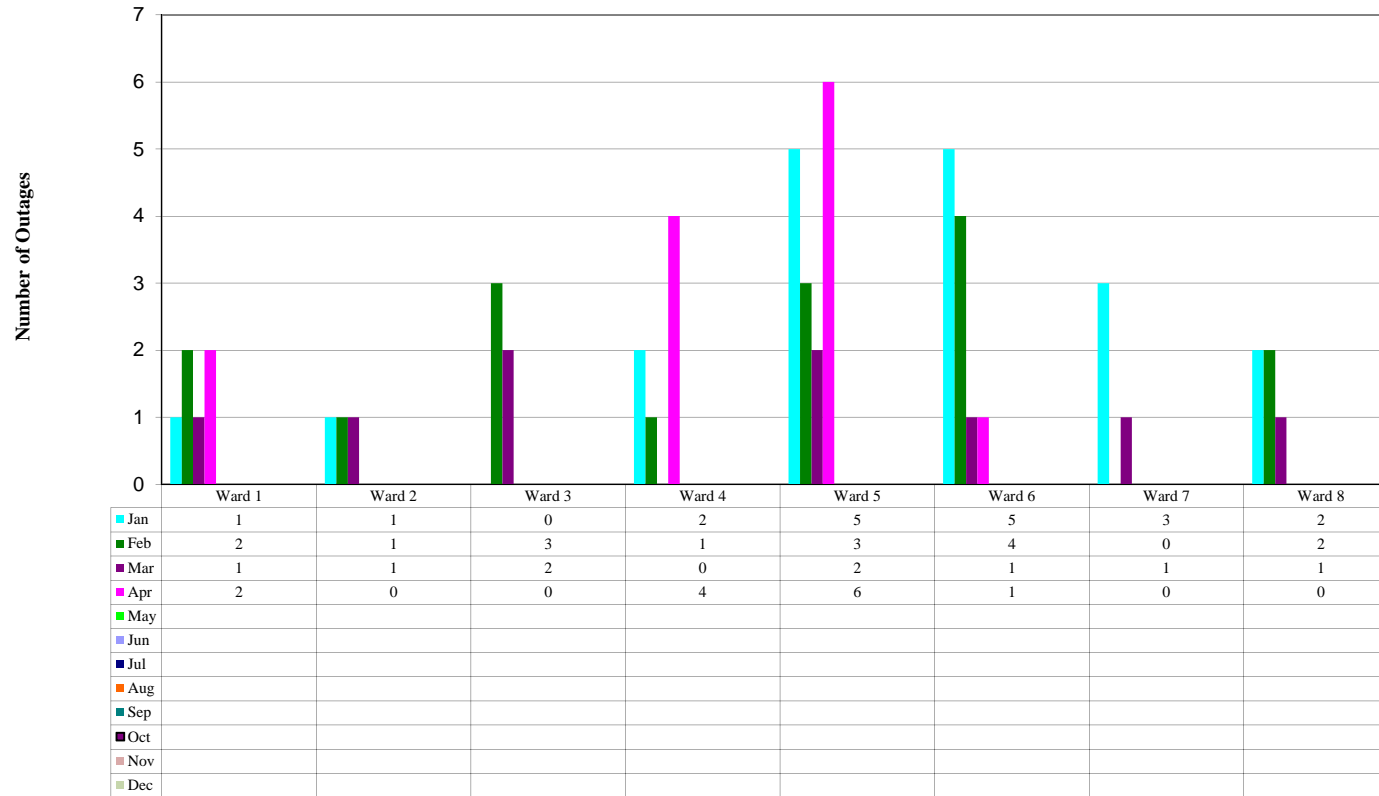
APPENDIX A-1 (Table)

Number of Non-Major Service Outages By Ward By Month - 2018																	
	1st Qtr. 2018				2nd Qtr. 2018				3rd Qtr. 2018				4th Qtr. 2018				Year to Date
Ward	Jan	Feb	Mar	Q1 Total	Apr	May	Jun	Q2 Total	Jul	Aug	Sep	Q3 Total	Oct	Nov	Dec	Q4 Total	Total
Ward 1	1	2	1	4	2			2				0				0	6
Ward 2	1	1	1	3	0			0				0				0	3
Ward 3	0	3	2	5	0			0				0				0	5
Ward 4	2	1	0	3	4			4				0				0	7
Ward 5	5	3	2	10	6			6				0				0	16
Ward 6	5	4	1	10	1			1				0				0	11
Ward 7	3	0	1	4	0			0				0				0	4
Ward 8	2	2	1	5	0			0				0				0	5

Note: To avoid double-counting, the outage count above is not to be summed across Wards. Outages that occur across multiple Wards are reported in the table above in each Ward impacted.

APPENDIX A-1 (Chart)

Number of Non-Major Service Outages By Ward By Month - 2018



Note: To avoid double-counting, the outage count above is not to be summed across Wards. Outages that occur across multiple Wards are reported in the chart above in each Ward impacted.

APPENDIX A-2 (Table)

Number of Customers Affected By Non-Major Service Outages By Ward By Month - 2018																	
Ward	1st Qtr. 2018				2nd Qtr. 2018				3rd Qtr. 2018				4th Qtr. 2018				Year to Date
	Jan	Feb	Mar	Q1 Total	Apr	May	Jun	Q2 Total	Jul	Aug	Sep	Q3 Total	Oct	Nov	Dec	Q4 Total	Total
Ward 1	85	356	1	442	1,176			1,176				0				0	1,618
Ward 2	212	3	119	334	0			0				0				0	334
Ward 3	0	770	908	1,678	0			0				0				0	1,678
Ward 4	2,894	1,593	0	4,487	4,822			4,822				0				0	9,309
Ward 5	2,263	3,411	525	6,199	1,111			1,111				0				0	7,310
Ward 6	3,414	807	1,634	5,855	279			279				0				0	6,134
Ward 7	369	0	9	378	0			0				0				0	378
Ward 8	105	579	2,156	2,840	0			0				0				0	2,840
Totals	9,342	7,519	5,352	22,213	7,388			7,388				0				0	29,601

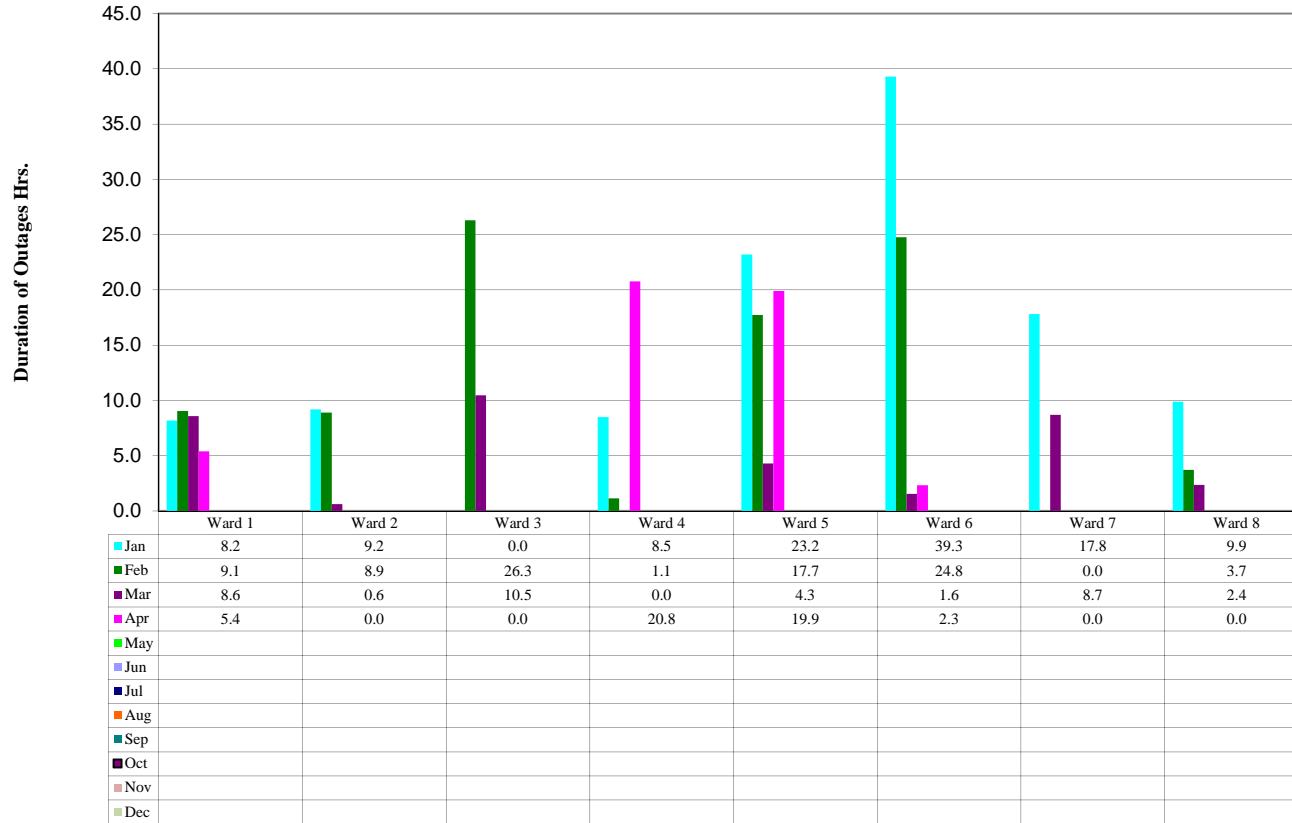
APPENDIX A-3 (Table)

Duration (Hours) of Non-Major Service Outages By Ward By Month - 2018																	
Ward	1st Qtr. 2018				2nd Qtr. 2018				3rd Qtr. 2018				4th Qtr. 2018				Year to Date
	Jan	Feb	Mar	Q1 Total	Apr	May	Jun	Q2 Total	Jul	Aug	Sep	Q3 Total	Oct	Nov	Dec	Q4 Total	Total
Ward 1	8.2	9.1	8.6	26	5.4			5				0				0	31
Ward 2	9.2	8.9	0.6	19	0.0			0				0				0	19
Ward 3	0.0	26.3	10.5	37	0.0			0				0				0	37
Ward 4	8.5	1.1	0.0	10	20.8			21				0				0	30
Ward 5	23.2	17.7	4.3	45	19.9			20				0				0	65
Ward 6	39.3	24.8	1.6	66	2.3			2				0				0	68
Ward 7	17.8	0.0	8.7	27	0.0			0				0				0	27
Ward 8	9.9	3.7	2.4	16	0.0			0				0				0	16

Note: To avoid double-counting, the durations above are not to be summed across Wards. Outages that occur across multiple Wards are reported in the table above in each Ward impacted.

APPENDIX A-3 (Chart)

Duration (Hours) of Non-Major Service Outages By Ward By Month - 2018



Note: To avoid double-counting, the durations above are not to be summed across Wards. Outages that occur across multiple Wards are reported in the table above in each Ward impacted.

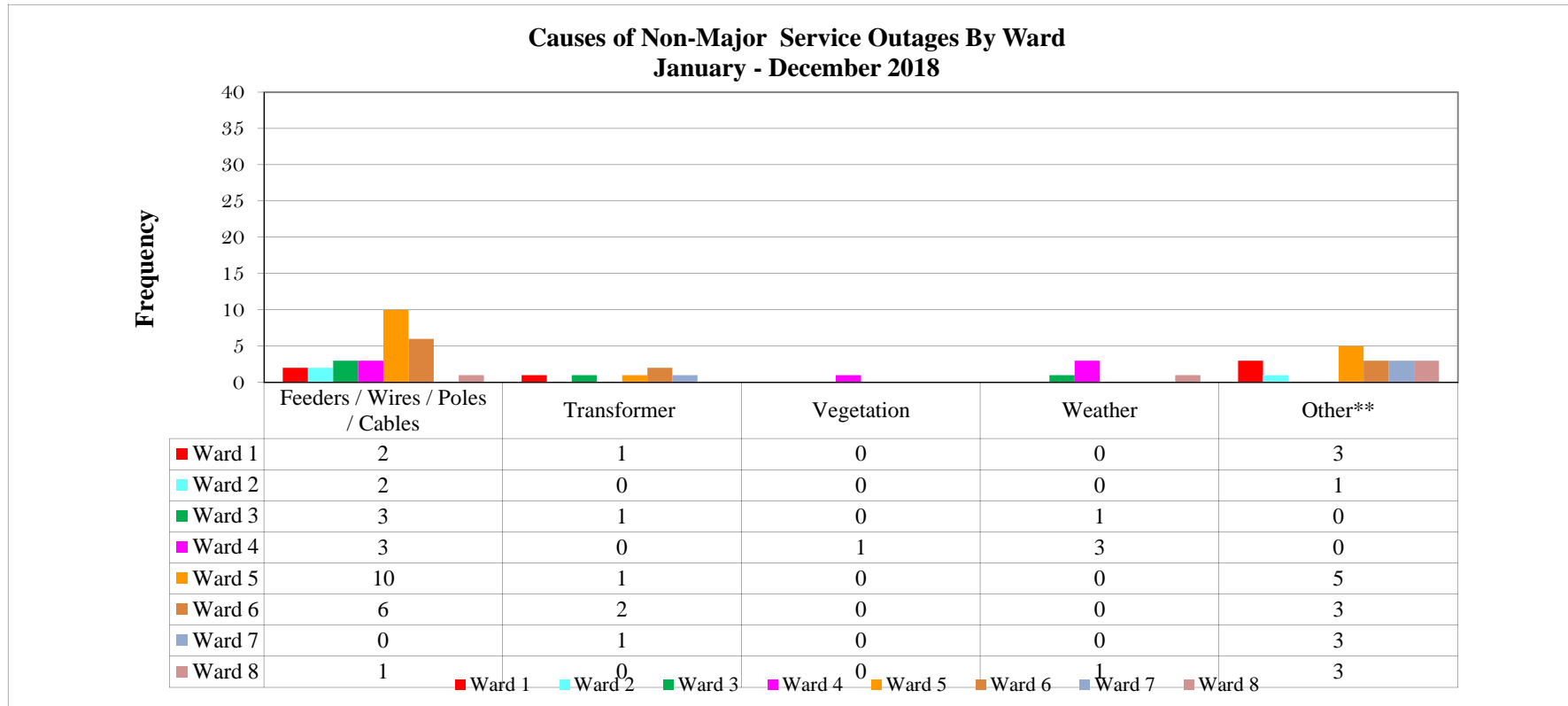
APPENDIX A-5 (Table)

* Causes of Non-Major Service Outages By Ward By Quarter - January - December 2018																										
	Q1 = Jan + Feb + Mar					Q2 = Apr + May + Jun					Q3 = Jul+ Aug + Sep					Q4 = Oct + Nov + Dec					Year to Date					
	Feeders / Wires / Poles / Cables	Transformer	Vegetation	Weather	Other*	Feeders / Wires / Poles / Cables	Transformer	Vegetation	Weather	Other*	Feeders / Wires / Poles / Cables	Transformer	Vegetation	Weather	Other*	Feeders / Wires / Poles / Cables	Transformer	Vegetation	Weather	Other*	Feeders / Wires / Poles / Cables	Transformer	Vegetation	Weather	Other**	
Ward 1	2	0	0	0	2	0	1	0	0	1												2	1	0	0	3
Ward 2	2	0	0	0	1	0	0	0	0	0												2	0	0	0	1
Ward 3	3	1	0	1	0	0	0	0	0	0												3	1	0	1	0
Ward 4	3	0	0	0	0	0	0	1	3	0												3	0	1	3	0
Ward 5	7	0	0	0	3	3	1	0	0	2												10	1	0	0	5
Ward 6	6	2	0	0	2	0	0	0	0	1												6	2	0	0	3
Ward 7	0	1	0	0	3	0	0	0	0	0												0	1	0	0	3
Ward 8	1	0	0	1	3	0	0	0	0	0												1	0	0	1	3

Note: To avoid double-counting, the outage count above is not to be summed across Wards. Outages that occur across multiple Wards are reported in the table above in each Ward impacted.

**** Outages classified as Other include Cable Cuts, Dig-Ins, Vehicle Accidents, Employees, Overloads, Unknown, Etc.**

APPENDIX A-5 (Chart)



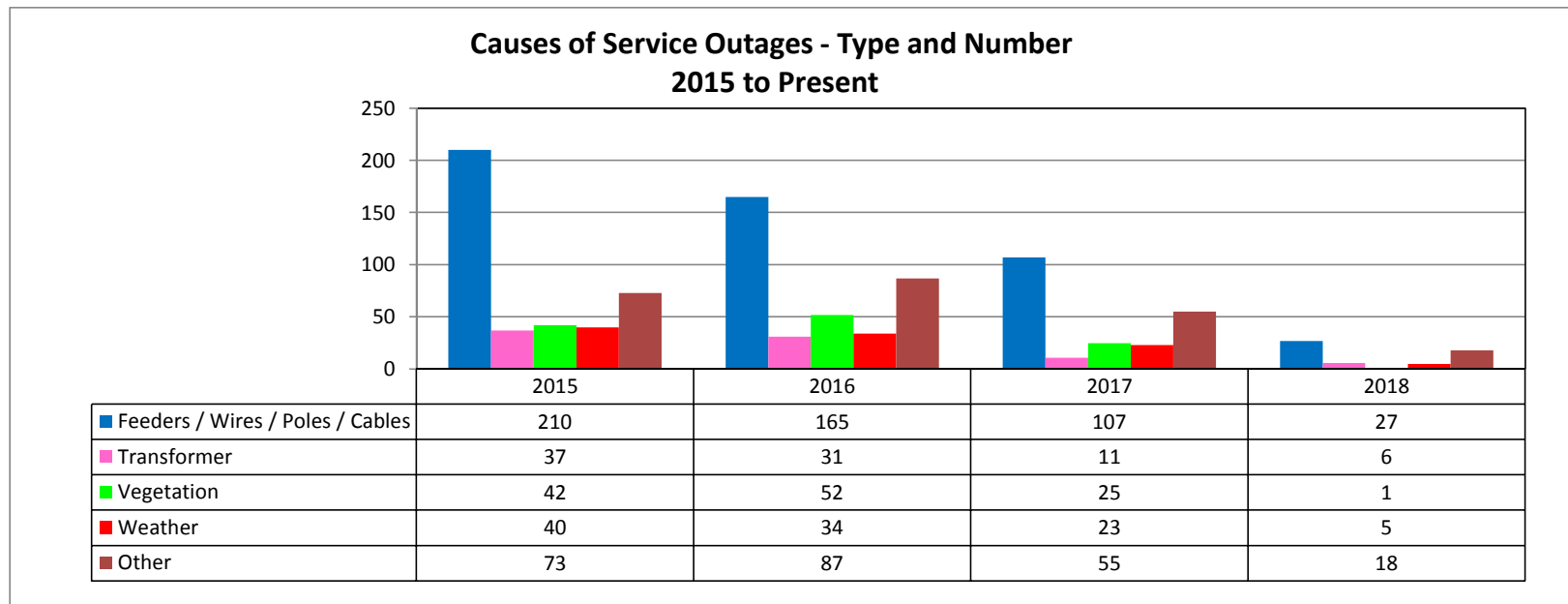
Note: To avoid double-counting, the outage count above is not to be summed across Wards. Outages that occur across multiple Wards are reported in the chart above in each Ward impacted.

Attachment 1-10

APPENDIX B-4 (Table)

Causes of Service Outages - Type and Number 2015 to Present						
	Feeders / Wires / Poles / Cables	Transformer	Vegetation	Weather	Other	Total
2015	210	37	42	40	73	402
2016	165	31	52	34	87	369
2017	107	11	25	23	55	221
2018	27	6	1	5	18	57
Totals	509	85	120	102	233	1049

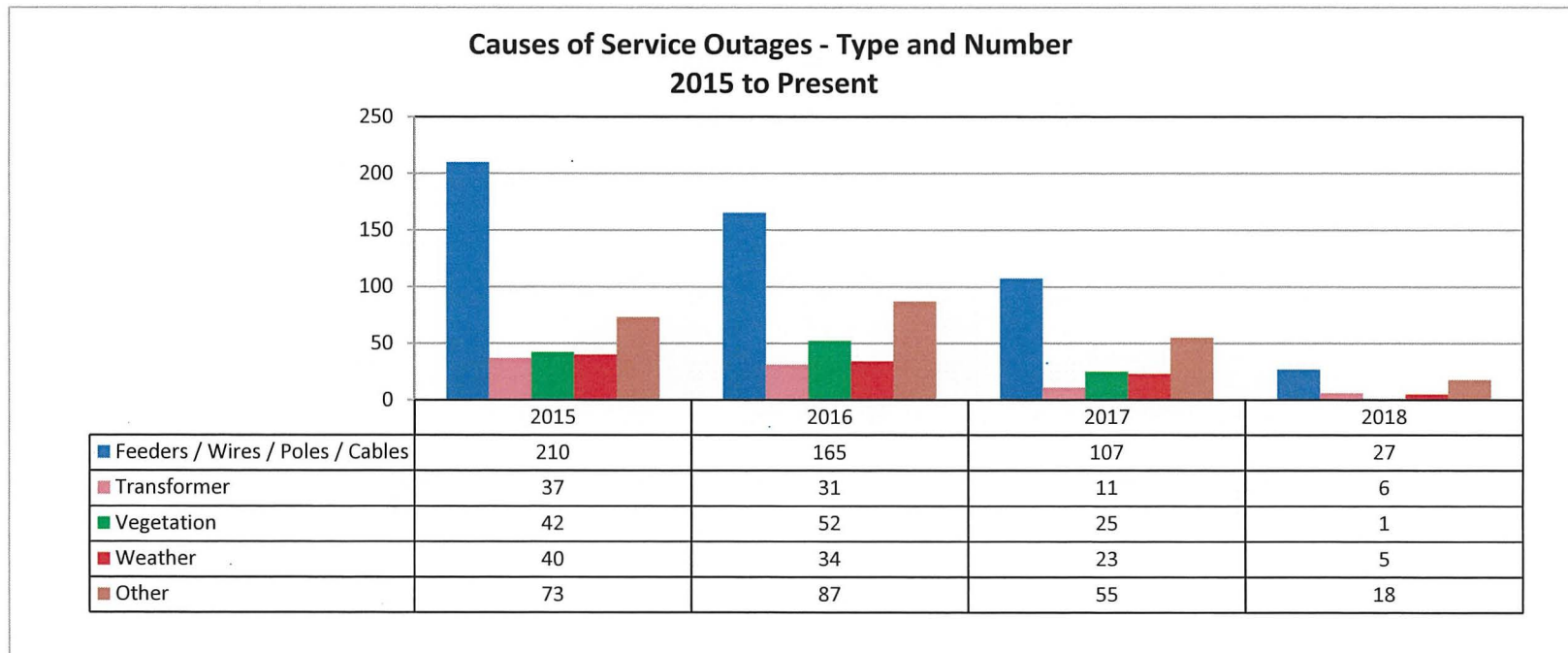
APPENDIX B-4 (Chart)



APPENDIX B-4 (Table)

Causes of Service Outages - Type and Number 2015 to Present						
	Feeders / Wires / Poles / Cables	Transformer	Vegetation	Weather	Other	Total
2015	210	37	42	40	73	402
2016	165	31	52	34	87	369
2017	107	11	25	23	55	221
2018	27	6	1	5	18	57
Totals	509	85	120	102	233	1049

APPENDIX B-4 (Chart)



CERTIFICATE OF SERVICE

I hereby certify that a copy of Potomac Electric Power Company's Monthly Outage Report for April 2018 was served this 15th day of May 2018 on all parties in Docket SO-2018-05-E by electronic mail.

Ms. Brinda Westbrook-Sedgwick
Commission Secretary
Public Service Commission
of the District of Columbia
1325 G Street N.W. Suite 800
Washington, DC 20005
bwestbrook@psc.dc.gov

Frann G. Francis, Esquire
Apartment & Office Building Association
of the Washington Metropolitan
Area
1050 17th Street, NW, Suite 300
Washington, DC 20036
ffrancis@aoba-metro.org


Sandra Mattavous-Frye, Esq.
People's Counsel
Office of the People's Counsel
1133 15th Street, NW, Suite 500
Washington, DC 20005
smfrye@opc-dc.gov

Brian Caldwell, Esq.
Office of the Attorney General
of the District of Columbia
441 4th Street, NW
Suite 450 North
Washington, DC 20001
brian.caldwell@dc.gov

Laurence C. Daniels, Esq.
Director of Litigation
Office of the People's Counsel
1133 15th Street, NW, Suite 500
Washington, DC 20005
ldaniels@opc-dc.gov

Brian H. Lederer, Esquire
International Brotherhood of Electrical
Workers (IBEW) Local 1900
3003 Van Ness Street, NW
Suite W228
Washington, DC 20008
brian.lederer@att.net

Christopher Lipscombe, Esq.
Attorney General
Public Service Commission
of the District of Columbia
1325 G Street N.W. Suite 800
Washington, DC 20005
clipscombe@psc.dc.gov



Andrea H. Harper